

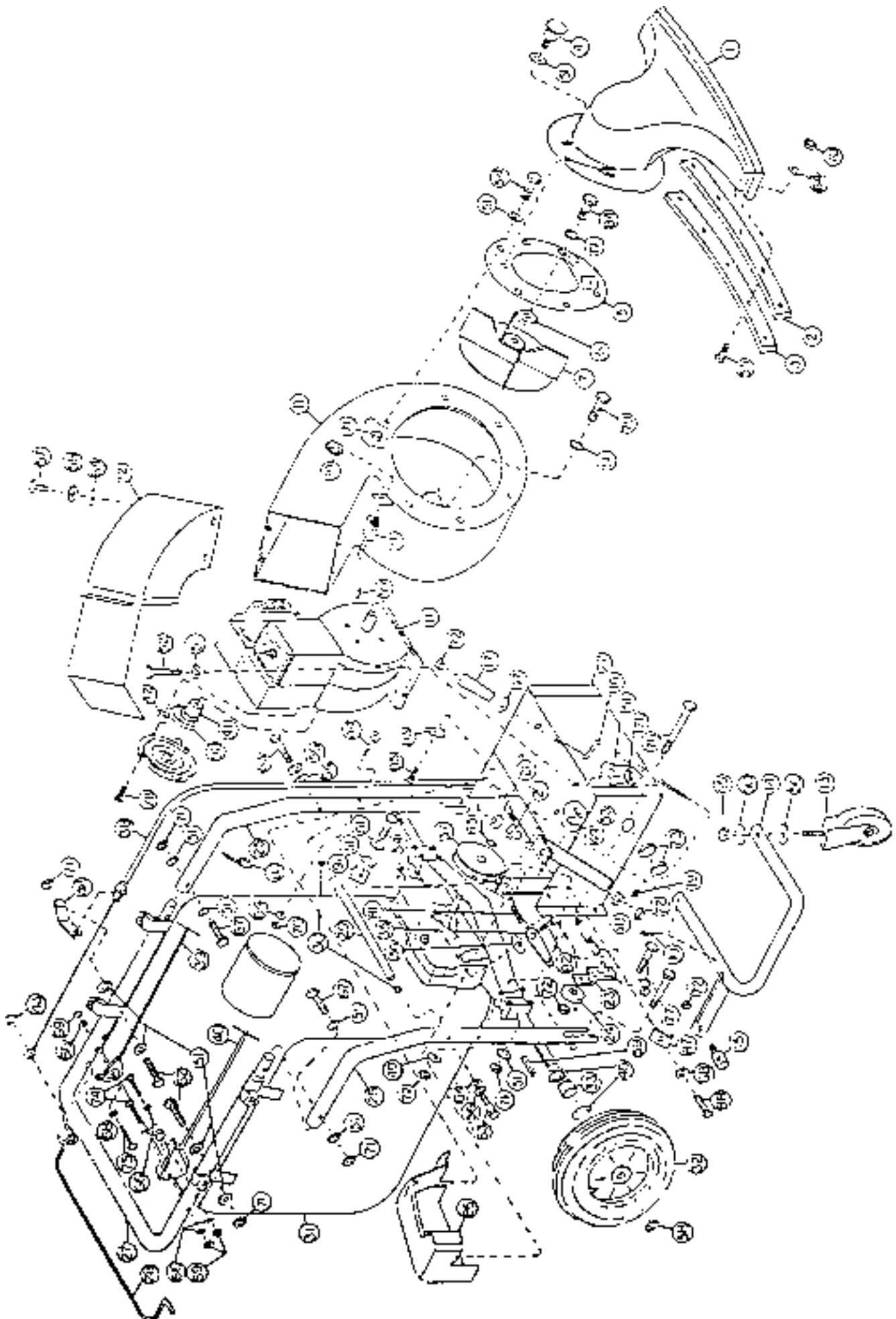
ERSATZTEILLISTE

Laubsauger ES-337SP mit Schaltzug

ECHO-Motorgeräte
Vertrieb Deutschland GmbH
Otto-Schott-Str. 7

72555 Metzingen

Telefon 07123-1091
Telefax 07123-2589
<http://www.echo-shop.de>
email: info@echo-shop.de



| Key | Part No. | Qty. | Description | Key | Part No. | Qty. | Description |
|-----|----------|------|----------------------------------|-----|----------|------|----------------------------|
| 1 | 9A-D2584 | 1 | Intake Nozzle Assy. | 47 | X-1693 | 1 | 3/8 I.D. Nylon Spacer |
| 2 | 9-B2105 | 1 | Rubber Scraper | 48 | 9-A2555 | 1 | Tube Bracket |
| 3 | 9-B2106 | 1 | Retainer | 49 | L-64 | 5 | 3/8 Flat Washer |
| 4 | 9-A2550 | 1 | Nozzle Knob | 50 | L 64A | 2 | 1/2 Flat Washer |
| 5 | 9A-D2545 | 1 | Adaptor Plate Assy. | 51 | L-99 | 28 | 5/16 Flat Washer |
| 6 | 9-A2122 | 1 | Impeller Spacer | 52 | L-127 | 4 | 5/16-18 x 1 1/2 HHCS |
| 7 | 9A-D2430 | 1 | Impeller Assy. | 53 | 1-131B | 1 | .093 x 3/4 Cotter Pin |
| 8 | 9A-C2538 | 1 | Impeller Housing Assy. | 54 | L-307 | 7 | 5/16-18 x 5/8 HHCS |
| 9 | 9A-2575 | 1 | Switch Assy. | 55 | L-172 | 5 | 1/4-20 x 3/4 HHCS |
| 10 | X-1574 | 2 | 1/8 Dia. x 1 3/4 Cotter Pin | 56 | X-1600 | 6 | 1/4 Split Lock Washer |
| | 9-2502 | 1 | Engine | 57 | X-1001 | 4 | 1/4-20 x 1/2 HHCS |
| 12 | 9A-D2382 | 1 | Elbow Assy. | 58 | X-1003 | 2 | 3/4 "E Key" Retainer |
| 13 | 9-A2517 | 1 | Caster Assy. | 59 | X-1009 | 3 | 3/16 Sq. x 1 7/8 Key |
| 14 | 9A-C2537 | 1 | Caster Tube Assy. | 60 | X-1020 | 1 | 3/8-16 x 1 3/4 HHCS |
| 15 | 9A-2441 | 1 | Pivot Bolt | 61 | X-1025 | 6 | 5/16 Split Lock Washer |
| 16 | 9-B2526 | 1 | Height Adjustment Rod | 62 | X-1028 | 2 | 5/16-18 x 2 HHCS |
| 17 | 9-A2541 | 1 | Height Adjustment Knob | 63 | X-1072 | 2 | 1/4-20 x 1 3/4 HHCS |
| 18 | X-A2016 | 1 | 3/8 I.D. Rod Collar | 64 | X-1099 | 12 | 1/4 Flat Washer |
| 19 | X-2016 | 1 | 1/4-20 x 1/4 Set Screw | 65 | X-1353 | 1 | 1/2-13 Center-Loc Nut |
| 20 | 9-A2639 | 1 | Shoulder Bushing | 66 | X-2419 | 5 | #20 Flat Washer |
| 21 | 1-A2666 | 1 | Spacer | 67 | X-2545 | 2 | 5/16-18 x 2 1/4 HHCS |
| 22 | 9A-D2536 | 1 | Frame Assy. | 68 | X-1617 | 3 | #20 x 3/4 Flat Washer |
| 23 | 9A-A2528 | 1 | Idler Pulley Assy. | 69 | X-1520 | 3 | 10-24 Nyloc Nut |
| 24 | 9-A10259 | 1 | Idler Pulley | 70 | X-1621 | 6 | 1/4-20 Nyloc Nut |
| 25 | 9-D2519 | 1 | Left Upright Tube | 71 | X-1622 | 18 | 5/16-18 Nyloc Nut |
| 26 | 9-D2520 | 1 | Right Upright Tube | 72 | X-1623 | 8 | 3/8-16 Nyloc Nut |
| 27 | 9-D2518 | 1 | Steering Handle | 73 | X-1681 | 2 | 1.275 x 2 Nylon Flatwasher |
| 28 | 9A-C2531 | 1 | Clutch Ball Assy. | 74 | X-1682 | 2 | 10-24 x 2 HHMS |
| 29 | 9-A2495 | 1 | Support Tube | 75 | X-1684 | 1 | 10-24 x 2 1/4 HHMS |
| 30 | X-1567 | 2 | Tube Nuts 1/4-20 | 76 | X-1685 | 4 | 3/8-16 x 2 3/4 HHCS |
| 31 | 9A-2572 | 1 | Debris Bag Assy. | 77 | X-1686 | 4 | 5/16-18 x 2 1/2 HHCS |
| 32 | 9-2542 | 2 | Wheel/Tire Assy. | 78 | X-1687 | 4 | 10-32x5/8 Washer Hd. Bolt |
| 33 | 9-A2509 | 2 | Wheel Spacer | 79 | X-1688 | 4 | 5/16-24 x 1 1/4 HHCS |
| 34 | 9-2535 | 2 | Transaxle | 80 | X-1689 | 4 | 7" Black Wire Tie |
| 35 | 9-A2520 | 2 | Shift Lever | 81 | 1-1465 | 1 | Return Spring |
| 36 | 9-A2549 | 1 | Shift Lever Spacer | 82 | X-1691 | 1 | 1/4-28x1/2 Washer Hd. Bol |
| 37 | 9-B2525 | 1 | Input Pulley | 83 | X-1692 | 2 | Cable Clamp |
| 38 | 9-A2516 | 1 | Clutch Cable Assy. | 84 | X-1694 | 1 | 5/16-24 x 1 1/2 HHCS |
| 39 | 9-A2557 | 1 | Throttle Control Assy. | 85 | X-1695 | 1 | 10-24x5/8 SelfTapping Sc |
| 40 | 9-A2492 | 1 | Shift Control Assy. | 86 | 9-2559 | 1 | Transaxle/Belt Cover |
| 41 | 9A-2524 | 1 | Engine Pulley Assy. | 87 | X-1615 | 2 | 10-24 Tinnerman Nut Clp |
| 42 | 9-A2540 | 4 | Starter Spacers | 88 | X-1659 | 2 | 10-24 x 5/8 Slotted Bolt |
| 43 | X-1348 | 1 | 5/16 I.D. Push-on Retainer | 89 | 9-2573 | 1 | Plastic Nut |
| 44 | X-1234A | 1 | 1/4-20 x 1 1/4 Eye Bolt | 90 | 9-2503 | 1 | Drive Belt |
| 45 | X-1830 | 1 | 5/8 Snap Ring | 91 | 9-2569 | 1 | Shift Cable Clamp |
| 46 | X-A1048 | 4 | 3/4 I.D. x 1 1/4 O.D. Flatwasher | | | | |

ECHO®

Motorgeräte

die geh'n ran