

ERSATZTEILLISTE

ECHO Motorsense SRM-2010

ECHO-Motorgeräte
Vertrieb Deutschland GmbH
Otto-Schott-Str. 7

72555 Metzingen

Telefon 07123-1091
Telefax 07123-2589
<http://www.echo-shop.de>
email: info@echo-shop.de

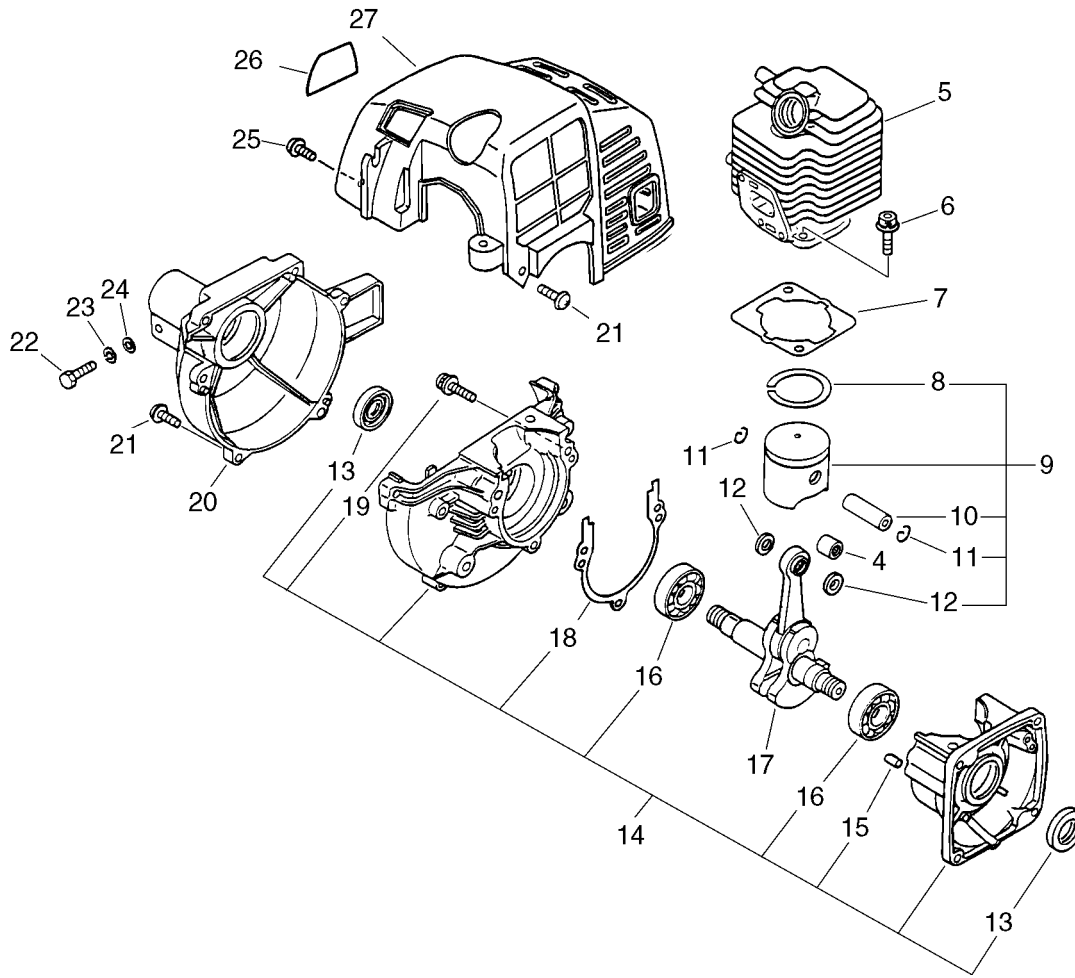


Bild	Artikelnummer	Anzahl	Beschreibung	Anmerkung
5	101011-45230	1	CYLINDER	
6	900162-05022	2	BOLT, H.S. 5*22	
7	101010-44332	1	GASKET, CYL. BASE	
9	100000-44331	1	PISTON KIT	
8	+ 100011-05330	1	RING, PISTON	
10	+ 100013-11520	1	PIN, PISTON	
11	+ 100015-04630	2	CIRCLIP, PISTON PIN	
12	+ 100014-11520	2	SPACER, PISTON PIN	
14	100204-51030	1	CRANKCASE KIT	
13	+ 100212-42030	2	OILSEAL	
15	+ 100215-03930	2	PIN, DOWEL	
16	+ 900810-36201	2	BEARING, BALL 6201	Sus. by 94035-36201
16	+ 94035-36201	2	BEARING, BALL	
18	+ 100242-42030	1	GASKET, CRANKCASE	
19	+ 900162-05028	3	BOLT, H.S. 5*28	
17	100100-44732	1	CRANKSHAFT ASY	Sus. by 100100-44733
17	100100-44733	1	CRANKSHAFT ASY	
4	+ 100012-51230	1	BEARING, NEEDLE	
20	101511-44630	1	COVER, FAN (BS)	
21	900238-04016	6	SCREW 4*16	
22	900151-05025	1	BOLT 5*25	
23	900605-00005	1	WASHER, SPRING 5	
24	900600-00005	1	WASHER 5	
25	900238-04012	2	SCREW 4*12	
26	890112-40730	1	LABEL, MODEL	
27	101514-42031	1	COVER, CYLINDER	

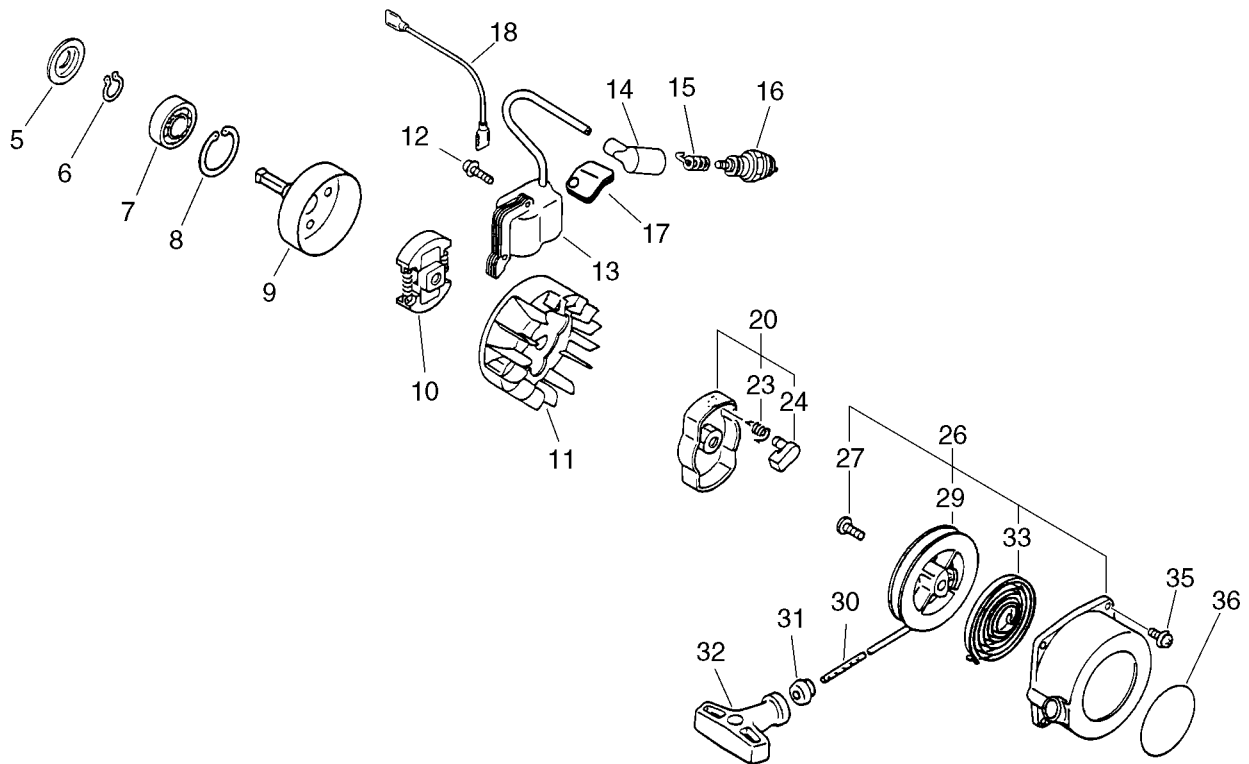


Bild	Artikelnummer	Anzahl	Beschreibung	Anmerkung
5	175053-04920	1	STOPPER	
6	900701-00012	1	CIRCLIP 12	
7	900814-06201	1	BEARING, BALL 6201	
8	900702-00032	1	CIRCLIP 32	
9	175005-46730	1	DRUM, CLUTCH	
10	175000-52130	1	CLUTCH ASY	
11	156801-44731	1	FLYWHEEL	Sus. by 156801-44731
11	156801-12360	1	FLYWHEEL	Sus. by 156801-44731
11	156801-44731	1	FLYWHEEL	
12	900238-04022	2	SCREW 4*22	
13	156601-44731	1	COIL, IGNITION	Sus. by set of 156601-52130 and 162010-
13	156601-52130	1	COIL, IGNITION	
14	159012-01620	1	CAP, SPARK PLUG	
15	159011-03432	1	COIL, SPARK PLUG CAP	
16	159017-10230	1	PLUG, SPARK (RCJ-7Y)	
17	150112-42030	1	BUSHING	
18	162010-52830	1	LEAD, GROUND	
20	177202-44330	1	PAWL ASY, STARTER	
23	+ 177234-42030	1	SPRING, RETURN	
24	+ 177218-44330	1	PAWL, STARTER	
26	177200-42033	1	STARTER ASY	
27	+ 177236-44330	1	SCREW	
29	+ 177215-44430	1	DRUM, STARTER	
30	+ 177226-10120	1	ROPE, STARTER	
31	+ 177227-42030	1	GUIDE, ROPE	
32	+ 177228-06530	1	GRIP, STARTER	
33	+ 177220-42030	1	SPRING, REWIND	
35	900238-04016	2	SCREW 4*16	
36	890118-49130	1	LABEL, ECHO	

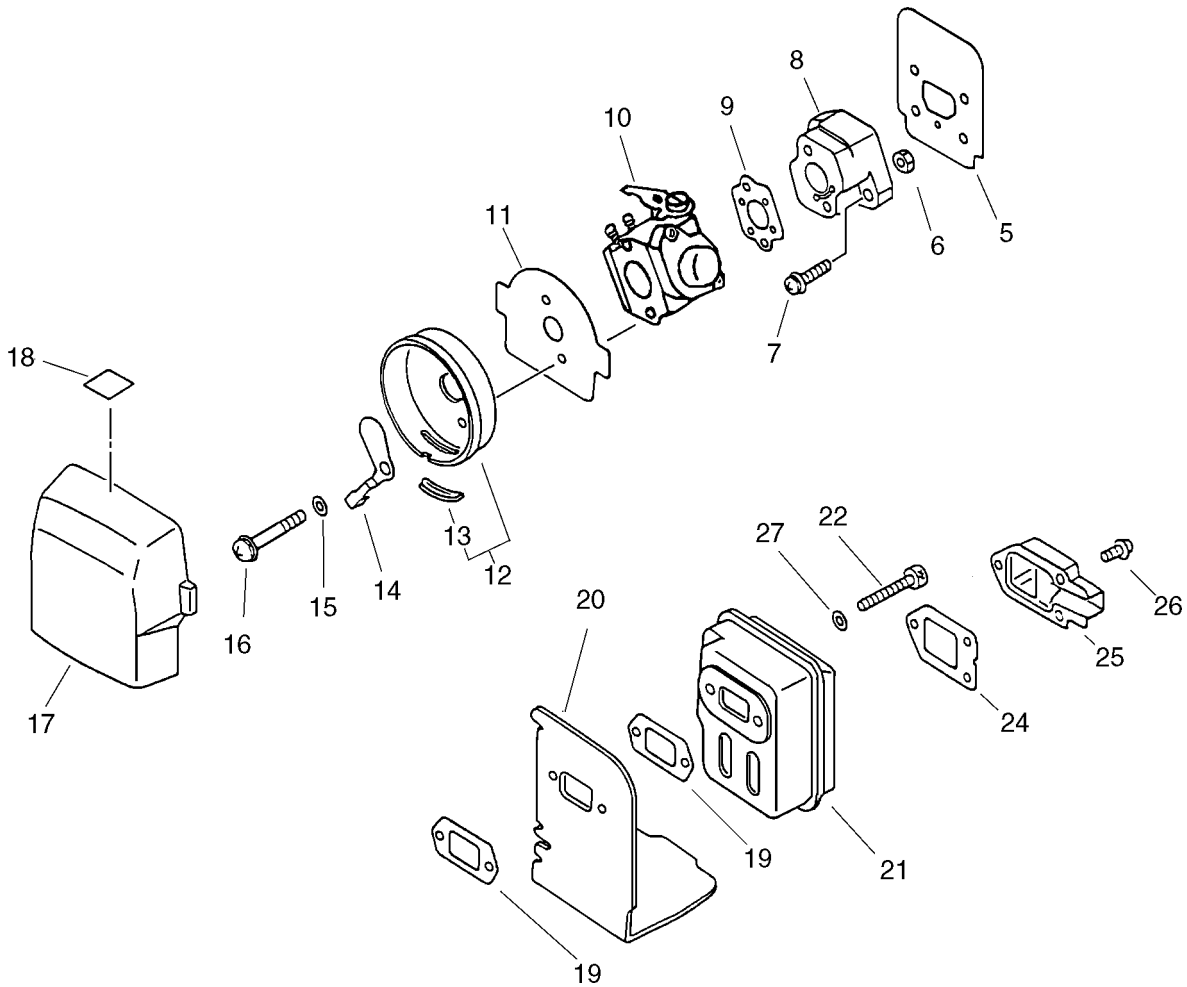


Bild	Artikelnummer	Anzahl	Beschreibung	Anmerkung
5	130010-42032	1	GASKET,INTAKE	
6	900500-00005	2	NUT 5	
7	900238-05020	2	SCREW 5*20	
8	130017-42031	1	INSULATOR, INTAKE	
9	130016-42031	1	GASKET, INTAKE	
10	125200-44731	1	CARBURETOR ASY	Sus. by 125200-44732
10	125200-44732	1	CARBURETOR ASY	
11	130319-42030	1	FIXTURE,AIR CLEANER	
12	130301-42030	1	CASE, AIR CLEANER	
13	+ 178810-42030	1	GROMMET, CHOKE	
14	178515-46731	1	SHUTTER, CHOKE	
15	178516-00830	2	SPACER	
16	900242-05057	2	SCREW 5*57	
17	130310-46730	1	FILTER, AIR	
18	890169-47530	1	LABEL, ADJUSTING	
19	145510-42031	2	GASKET, MUFFLER	Sus. by V104-000160
19	V104-000160	2	GASKET,EXHAUST	
20	145631-42030	1	COVER, MUFFLER	
21	145806-42030	1	MUFFLER	
22	900105-05055	2	BOLT, H.S. 5*55	
24	145866-42031	1	GASKET, MUFFLER LID	
25	145809-42030	1	LID, MUFFLER	
26	900242-04010	3	SCREW 4*10	
27	900600-00005	2	WASHER 5	

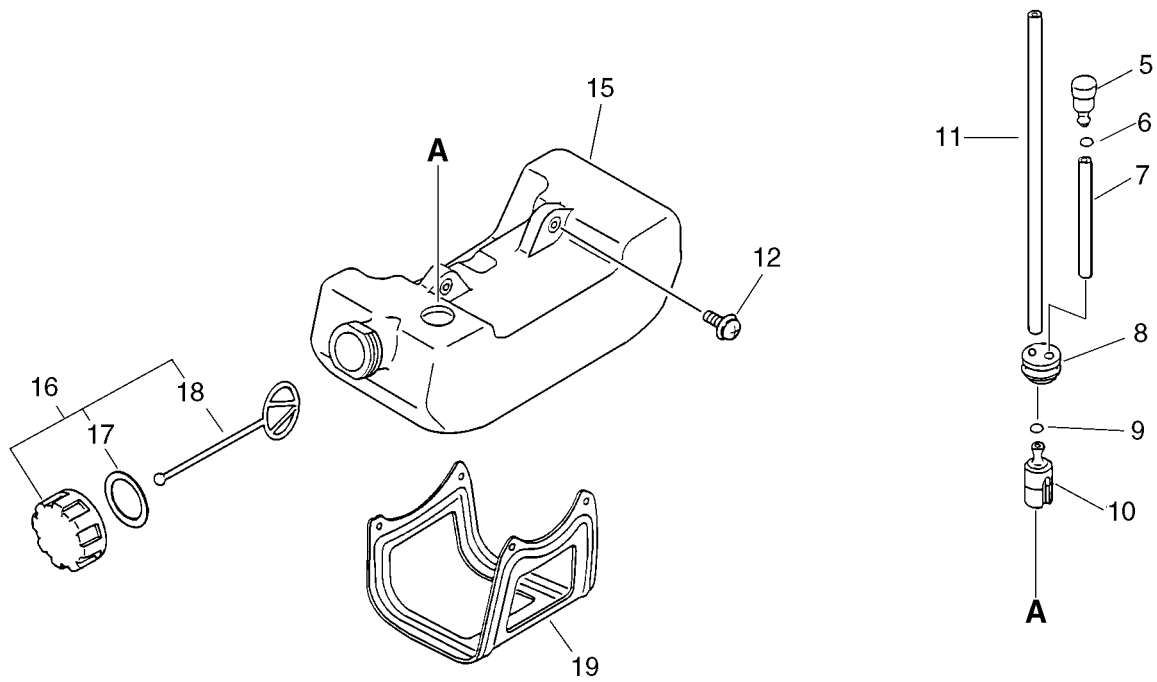


Bild	Artikelnummer	Anzahl	Beschreibung	Anmerkung
5	131300-56430	1	VALVE, CHECK	
6	130111-00530	1	CLIP	
7	131312-44330	1	PIPE, 3*5*70L	
8	132115-44330	1	GROMMET	
9	132013-09820	1	CLIP	
10	131205-07320	1	STRAINER, FUEL	
11	132010-13930	1	PIPE, FUEL	
12	900243-05016	2	SCREW 5*16	
15	131005-44330	1	TANK, FUEL	Sus. by 131005-44331
15	131005-44331	1	TANK, FUEL	
16	131004-08960	1	CAP ASY, FUEL	
17	+ 131016-55830	1	GASKET, FUEL CAP	
18	+ 131051-52430	1	CONNECTOR, CAP	
19	305110-42030	1	STAND (BL)	

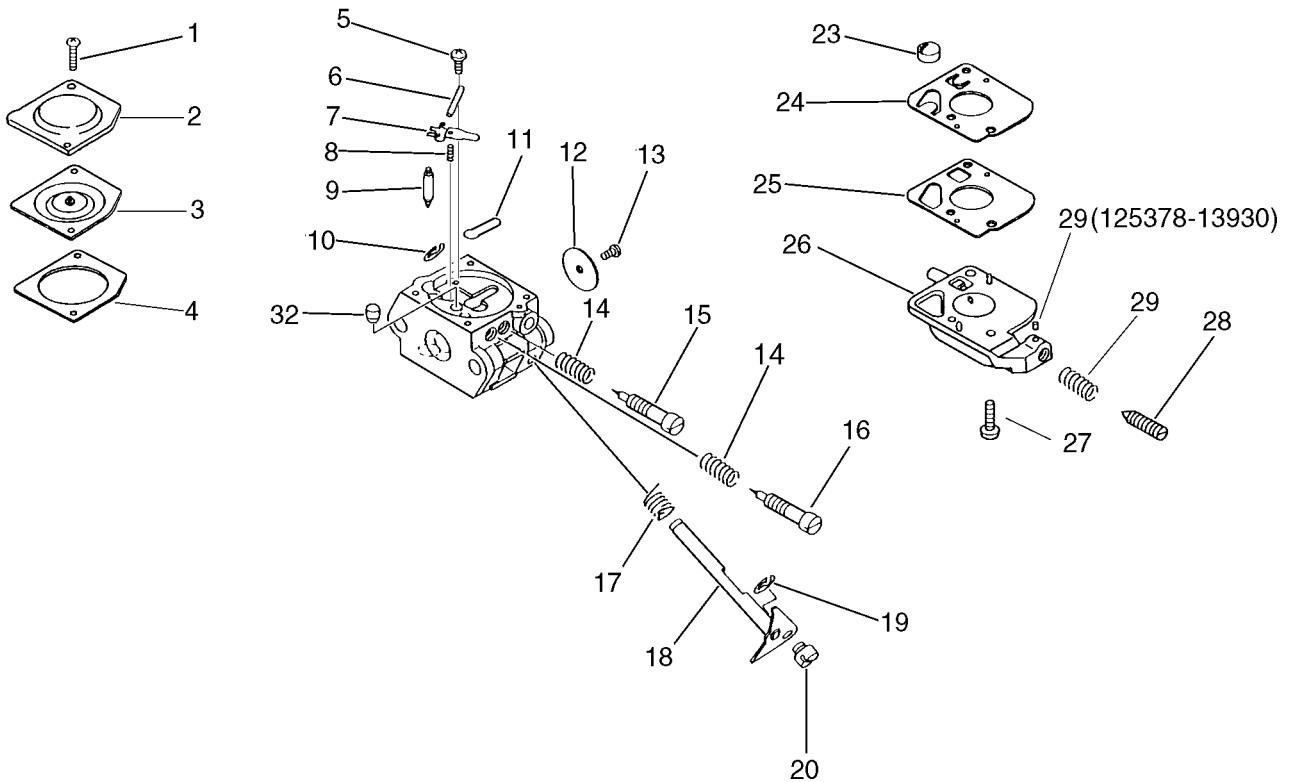


Bild	Artikelnummer	Anzahl	Beschreibung	Anmerkung
	125200-44731	1	CARBURETOR ASY	Sus. by 125200-44732
	125200-44732	1	CARBURETOR ASY	
1	+ 125344-52130	2	SCREW	
2	+ 125342-13210	1	COVER, DIAPHRAGM	
3	+ 125341-42030	1	DIAPHRAGM	
4	+ 125340-42030	1	GASKET, DIAPHRAGM	
5	+ 125339-42030	1	SCREW	
6	+ 125338-13930	1	PIN, METERING ARM	
7	+ 125323-42030	1	LEVER, METERING	
8	+ 125322-42030	1	SPRING, COIL	
9	+ 125337-06960	1	VALVE, INLET NEEDLE	
10	+ 125327-15130	1	CLIP	
11	+ 125345-15130	1	PLUG, WELCH	
12	+ 125316-42030	1	VALVE, THROTTLE	
13	+ 125314-13930	1	SCREW	
14	+ 125319-42030	2	SPRING, COIL	
15	+ 125318-42030	1	NEEDLE, IDLE	
16	+ 125320-42030	1	NEEDLE, HIGH SPEED	
17	+ 125313-42030	1	SPRING, THRT. RETURN	
18	+ 125317-42030	1	SHAFT, THROTTLE	
19	+ 125327-13930	1	CLIP	
20	+ 125372-42030	1	SWIVEL	
23	+ 125326-42030	1	STRAINER	
24	+ 125312-12820	1	DIAPHRAGM, FUEL PUMP	
25	+ 125325-13310	1	GASKET, FUEL PUMP	
26	+ 125324-42030	1	COVER, PUMP	Nur mit 125200-44731
26	+ 125324-12820	1	COVER, PUMP	Nur mit 125200-44732
27	+ 125310-42030	2	SCREW	
28	+ 125334-13930	1	SCREW, IDLE ADJUST	Nur mit 125200-44731
28	+ 125344-08560	1	SCREW, IDLE ADJUST	Nur mit 125200-44732
29	+ 125378-13930	1	PIECE, FRICTION	Nur mit 125200-44731
29	+ 125333-08560	1	SPRING, ADJUST SCREW	Nur mit 125200-44732
32	+ 125376-42030	1	NOZZLE, CHECK VALVE	

Bild	Artikelnummer	Anzahl	Beschreibung	Anmerkung
	125303-42030	1	Membransatz	
5-3	125341-42030	1	DIAPHRAGM	
5-4	125340-42030	1	GASKET, DIAPHRAGM	
5-24	125312-12820	1	DIAPHRAGM, FUEL PUMP	
5-25	125325-13310	1	GASKET, PUMP	
	125300-42030	1	Reparatursatz	
5-3	125341-42030	1	DIAPHRAGM	
5-4	125340-42030	1	GASKET, DIAPHRAGM	
5-6	125338-13930	1	PIN, METERING ARM	
5-7	125323-42030	1	LEVER, METERING	
5-8	125322-42030	1	SPRING, COIL	
5-9	125337-06960	1	VALVE, INLET NEEDLE	
5-11	125345-15130	1	PLUG, WELCH	
5-23	125326-42030	1	STRAINER	
5-24	125312-12820	1	DIAPHRAGM, FUEL PUMP	
5-25	125325-13310	1	GASKET, PUMP	

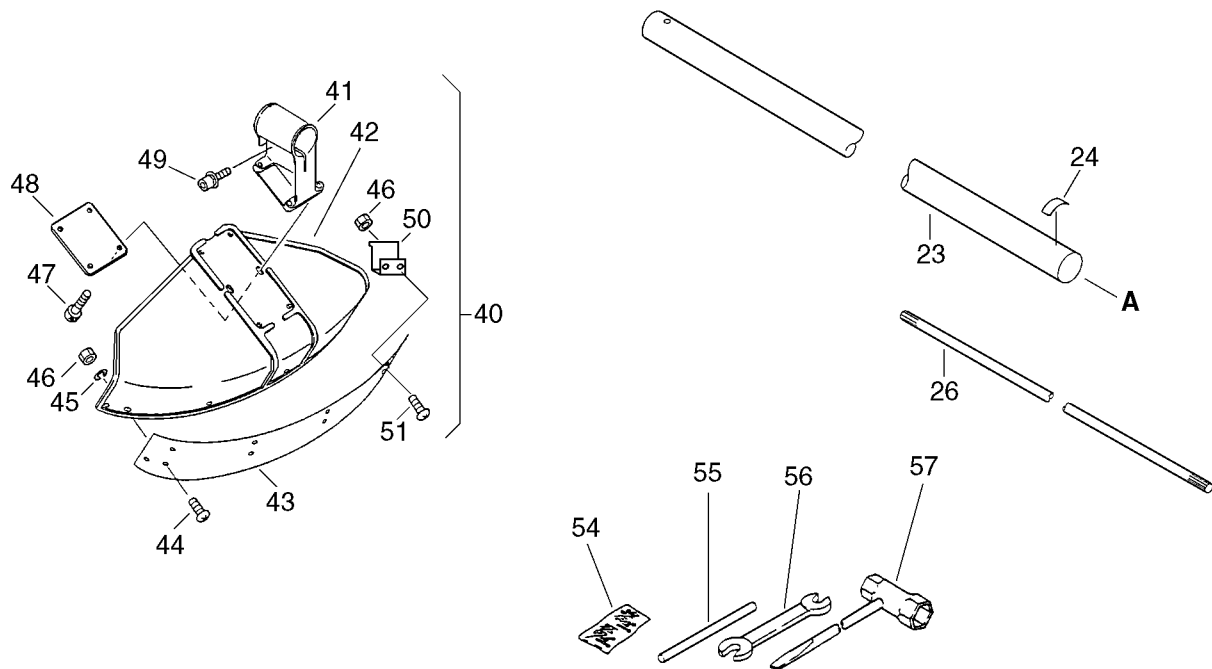


Bild	Artikelnummer	Anzahl	Beschreibung	Anmerkung
23	610206-28230	1	HOUSING ASS'Y D,SFT.	
24	890152-04930	1	LABEL, CAUTION	
26	610018-27830	1	SHAFT, DRIVE	
40	699001-44730	1	SHIELD, ASY	
41	+ 699011-27230	1	BRACKET, SHIELD	
42	+ 699010-54430	1	SHIELD, BLADE	
43	+ 699013-52130	1	PLATE, SHIELD	
44	+ 900242-05018	4	SCREW 5*18	
45	+ 900603-00005	4	WASHER 5	
46	+ 900500-00005	6	NUT 5	
47	+ 900242-05014	4	SCREW 5*14	
48	+ 699015-52130	1	PLATE, SHIELD	
49	+ 900142-05025	2	BOLT 5*25 (W/W,SW)	
50	+ 699016-54530	1	KNIFE, CORD	
51	+ 900242-05012	2	SCREW 5*12	
54	898502-01130	1	PIN 2*22 (W/POUCH)	
55	897518-01131	1	LOCKING TOOL	
56	895112-00330	1	SPANNER 8*10	
57	895410-08030	1	WRENCH, W/S. DRIVER	

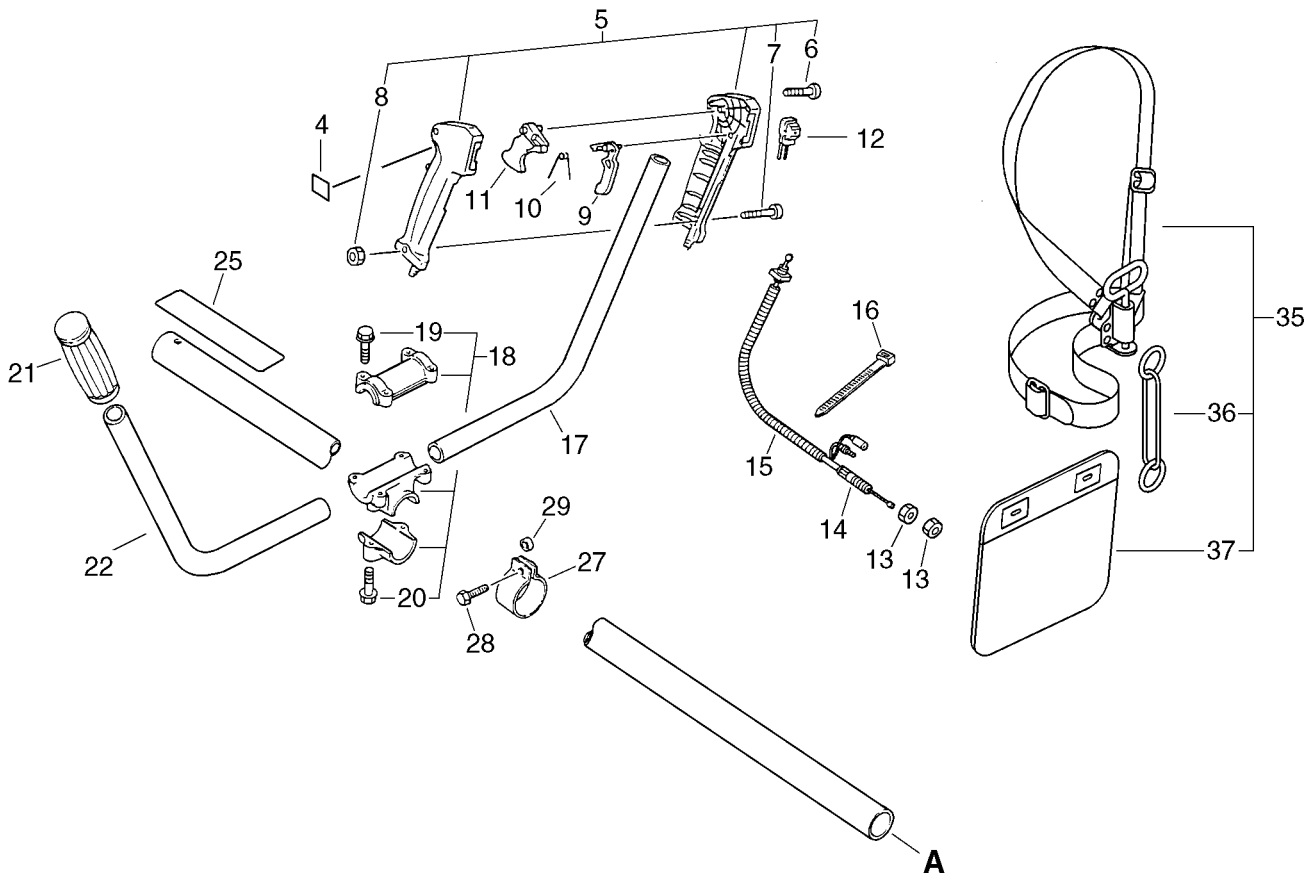


Bild	Artikelnummer	Anzahl	Beschreibung	Anmerkung
4	890157-39130	1	LABEL, SWITCH	
5	351102-47530	1	GRIP ASY, F-HANDLE	
6	+ 900246-03025	4	SCREW 3*25	
7	+ 900220-05030	1	SCREW 5*30	
8	+ 900500-00005	1	NUT 5	
9	178012-05960	1	LOCKOUT, THROTTLE	
10	178013-35631	1	SPRING, THR. LOCK	
11	178010-05960	1	CONTROL, THROTTLE	
12	163401-49230	1	SWITCH, IGNITION	
13	178021-05530	2	LOCKNUT	
14	178001-47530	1	WIRE, THROTTLE	
15	178127-47530	1	TUBE	
16	178121-43230	1	BAND	
17	351010-43130	1	HANDLE, FRONT	
18	351301-09230	1	BRACKET ASS'Y, HNDL.	Sus. by P021-000460
18	P021-000460	1	FIXTURE,ASY HANDLE	
19	+ 900142-05025	4	BOLT 5*25 (W/W,SW)	
20	+ 900142-06030	2	BOLT 6*30 (W/W,SW)	
21	351311-02330	1	GRIP, HANDLE	
22	351210-05530	1	HANDLE, LEFT (SL)	
25	890617-46830	1	LABEL, CAUTION	Sus. by 890617-43130
25	890617-43130	1	LABEL, CAUTION	
27	301207-08930	1	HOOK	
28	900100-05018	1	BOLT 5*18	
29	699012-03330	1	SPACER	
35	301001-41330	1	HARNESS ASY,SHOULDE	
36	+ 301305-24330	1	LINK	
37	+ 301105-41830	1	CUSHION	

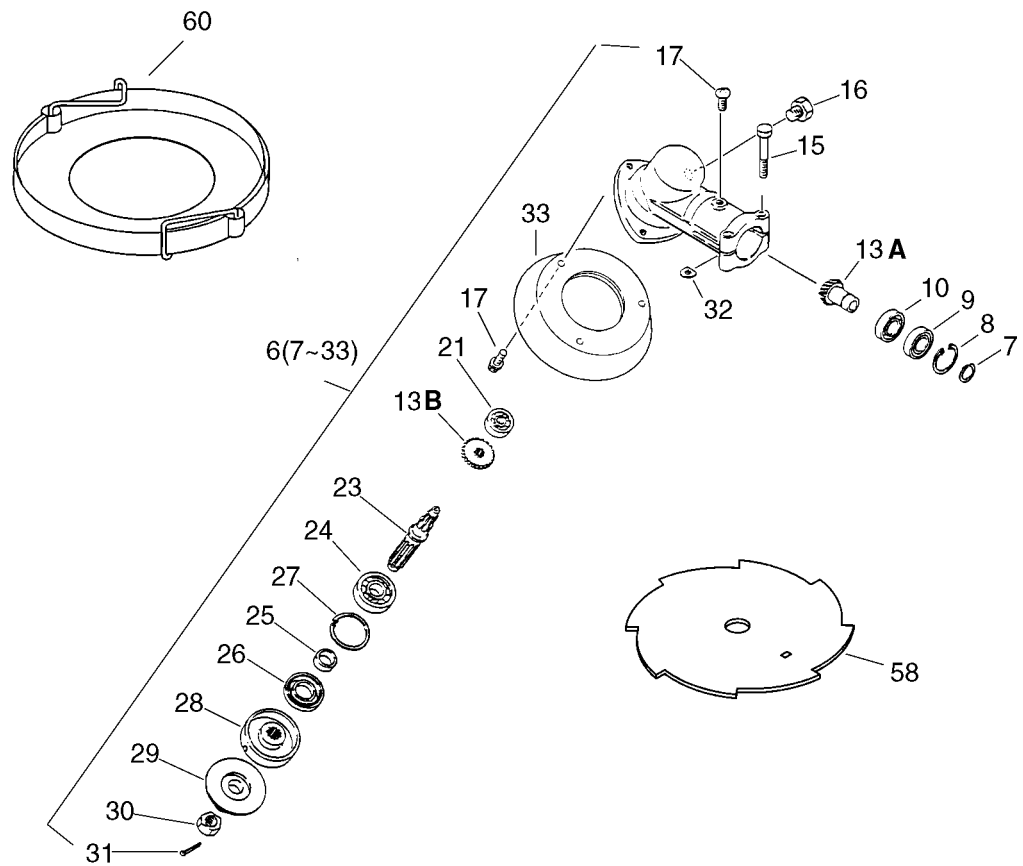


Bild		Artikelnummer	Anzahl	Beschreibung	Anmerkung
6		610400-41630	1	HOUSING ASY, GEAR	
7	+	900706-00010	1	CIRCLIP 10	
8	+	900702-00022	1	CIRCLIP 22	
9	+	900858-06900	1	BEARING, BALL 6900Z	
10	+	900855-06900	1	BEARING, BALL 6900	
13	+	610300-40830	1	GEAR SET	
15	+	900142-05028	2	BOLT 5*28 (W/W,SW)	
16	+	610434-50030	1	BOLT 8* 6	Sus. by 610434-50031
16	+	610434-50031	1	BOLT 8* 8	
17	+	900242-05010	4	SCREW 5*10	
21	+	900810-00626	1	BEARING, BALL 626	
23	+	610310-40830	1	SHAFT, P.T.O.	
24	+	900800-06000	1	BEARING, BALL 6000	
25	+	610315-22830	1	SPACER	
26	+	610413-22830	1	OILSEAL	
27	+	900702-00026	1	CIRCLIP 26	
28	+	610313-22830	1	PLATE, ADAPTER (U)	
29	+	610314-27230	1	PLATE, ADAPTER	
30	+	900511-00010	1	NUT 10 (L-H)	
31	+	900300-20022	1	PIN, SPLIT 2*22	
32	+	610239-04130	2	WASHER, SHIM	
33	+	610443-22830	1	PLATE, GUARD (WH)	
58		696001-48030	1	BLADE, 8-CUTTER	
60		898503-08030	1	COVER SET, CUTTER	

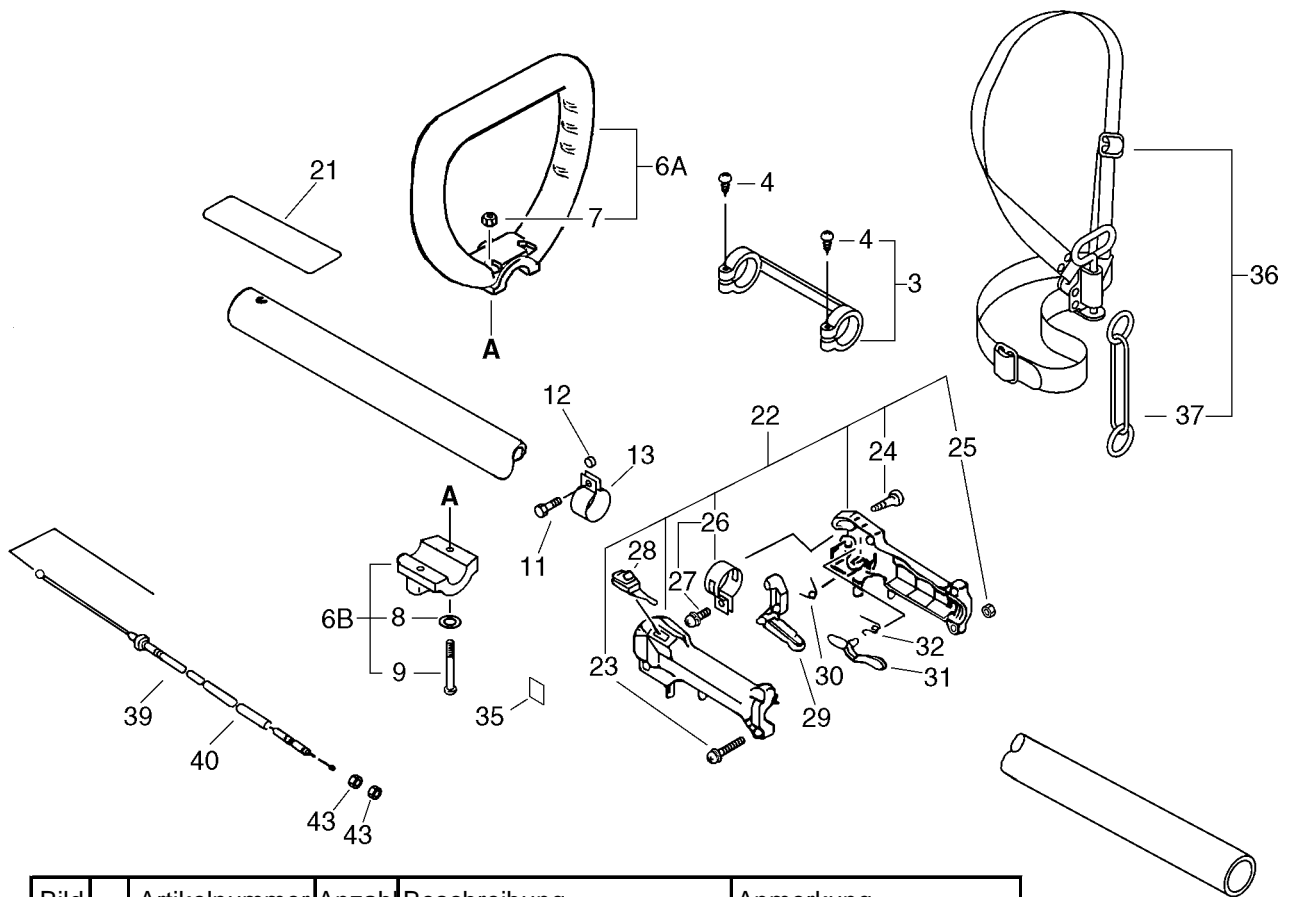


Bild	Artikelnummer	Anzahl	Beschreibung	Anmerkung
3	610281-46730	1	COLLER	
4	+ 900253-04025	2	SCREW 4*25	
6	351201-08930	1	HANDLE ASY, LOOP	
7	+ 900500-00005	2	NUT 5	
8	+ 900600-00005	2	WASHER 5	
9	+ 900220-05040	2	SCREW 5*40	
11	900100-05018	1	BOLT 5*18	
12	699012-03330	1	SPACER	
13	301207-08930	1	HOOK	
21	890177-46730	1	LABEL, CAUTION	Sus. by X505-000140
21	890617-63630	1	LABEL, CAUTION	Sus. by X505-000140
21	X505-000140	1	LABEL, CAUTION	
22	351102-29430	1	GRIP ASY, F-HANDLE	
23	+ 900238-05025	1	SCREW 5*25	
24	+ 900253-04018	3	SCREW TAPPING 4*18	
25	+ 900500-00005	1	NUT 5	
26	+ 301200-29430	1	BAND ASY	
27	++ 900238-05012	1	SCREW 5*12	
28	163400-52130	1	SWITCH, IGNITION	
29	178010-42232	1	CONTROL, THROTTLE	
30	178043-42230	1	SPRING, THR. RETURN	
31	178012-42230	1	LOCKOUT, THROTTLE	
32	178013-42230	1	SPRING, THR. LOCKOUT	
35	890157-39130	1	LABEL, SWITCH	
36	301000-55230	1	HARNESS ASY	
37	+ 301305-24330	1	LINK	
39	178001-52130	1	WIRE, THROTTLE	
40	178127-24030	1	TUBE	
43	900502-00006	2	NUT 6 (3N)	

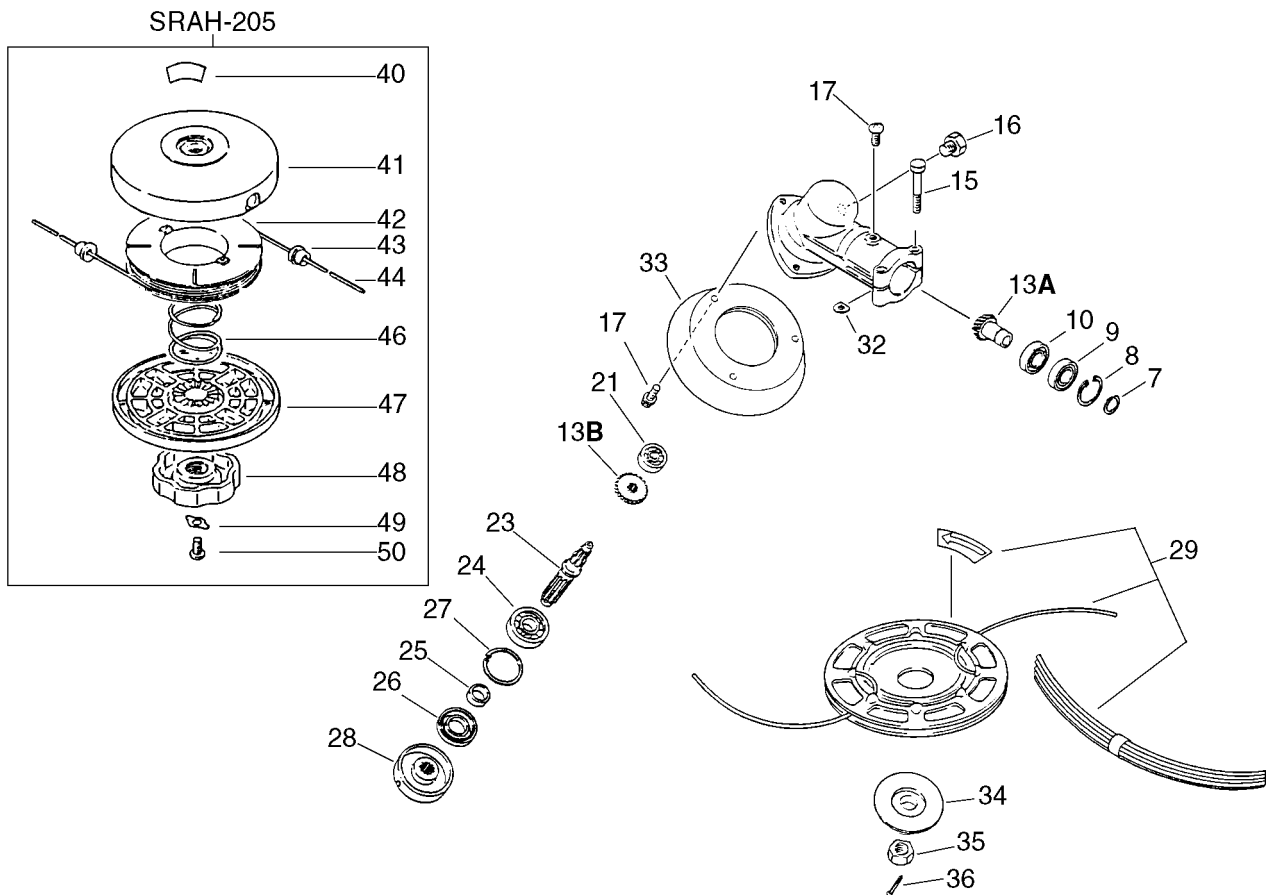


Bild	Artikelnummer	Anzahl	Beschreibung	Anmerkung
7	900706-00010	1	CIRCLIP 10	
8	900702-00022	1	CIRCLIP 22	
9	900858-06900	1	BEARING, BALL 6900Z	
10	900855-06900	1	BEARING, BALL 6900	
13	610300-40830	1	GEAR SET	
15	900142-05028	2	BOLT 5*28 (W/W,SW)	
16	610434-50030	1	BOLT 8* 6	Sus. by 610434-50031
16	610434-50031	1	BOLT 8* 8	
17	900242-05010	4	SCREW 5*10	
21	900810-00626	1	BEARING, BALL 626	
23	610310-40830	1	SHAFT, P.T.O.	
24	900800-06000	1	BEARING, BALL 6000	
25	610315-22830	1	SPACER	
26	610413-22830	1	OILSEAL	
27	900702-00026	1	CIRCLIP 26	
28	610313-44630	1	PLATE, ADAPTER	D. shaft Sr/Nr 009505 and before
28	610313-22830	1	PLATE, ADAPTER (U)	D. shaft Sr/Nr 009506 and after
29	696200-55230	1	CUTTER ASY, LINE	Sus. by 990109-09040
29	990109-09040	1	CUTTER BLACK	
32	610239-04130	2	WASHER, SHIM	
33	610443-22830	1	PLATE, GUARD (WH)	
34	610314-27230	1	PLATE, ADAPTER	D. shaft Sr/Nr 009506 and after
35	900511-00010	1	NUT 10 (L-H)	D. shaft Sr/Nr 009506 and after
36	900300-20022	1	PIN, SPLIT 2*22	D. shaft Sr/Nr 009506 and after
40	890617-46730	1	LABEL, CAUTION	
41	696205-06033	1	DRUM, CORD REEL	
42	696214-06830	1	REEL, CORD	
43	696212-06032	2	EYELET	
44	696215-22830	2	CORD, NYLON(2.4*2.5)	
46	696216-06030	1	SPRING	
47	696206-06032	1	COVER, DRUM (JY)	
48	696219-06031	1	NUT (JY)	
49	696220-06030	1	STOPPER, NUT	
50	900220-06010	1	SCREW 6*10	

ECHO®

Motorgeräte

die geh'n ran