

| | |
|-------|------------------|
| brand | MCCULLOCH |
|-------|------------------|

| | | |
|------|--------|-----------|
| date | MAY/03 | SHEET 1/4 |
|------|--------|-----------|

| | |
|-------------------|--------|
| Model | Prefix |
| CABRIO 291 | 02 |
| | |
| | |

| |
|------------------|
| Product number |
| 953900445 |
| |
| |

FIGURE 4

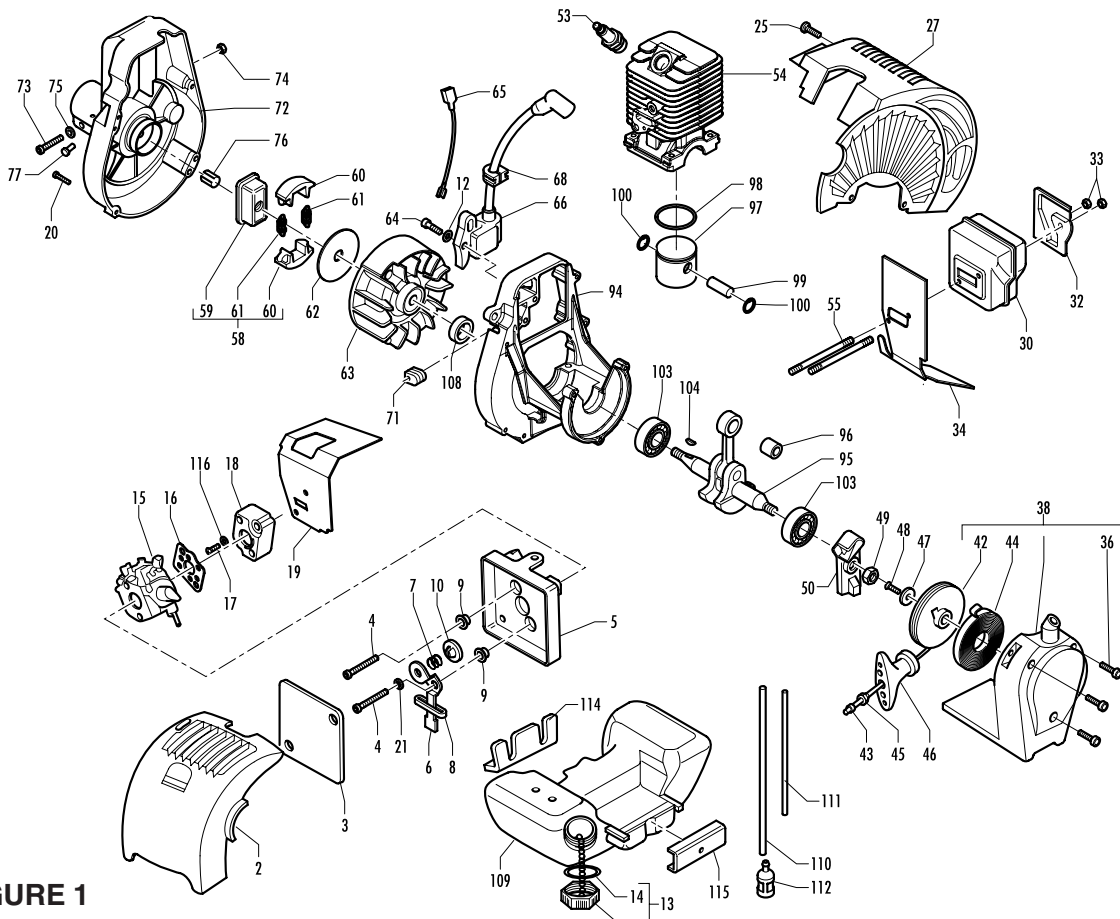
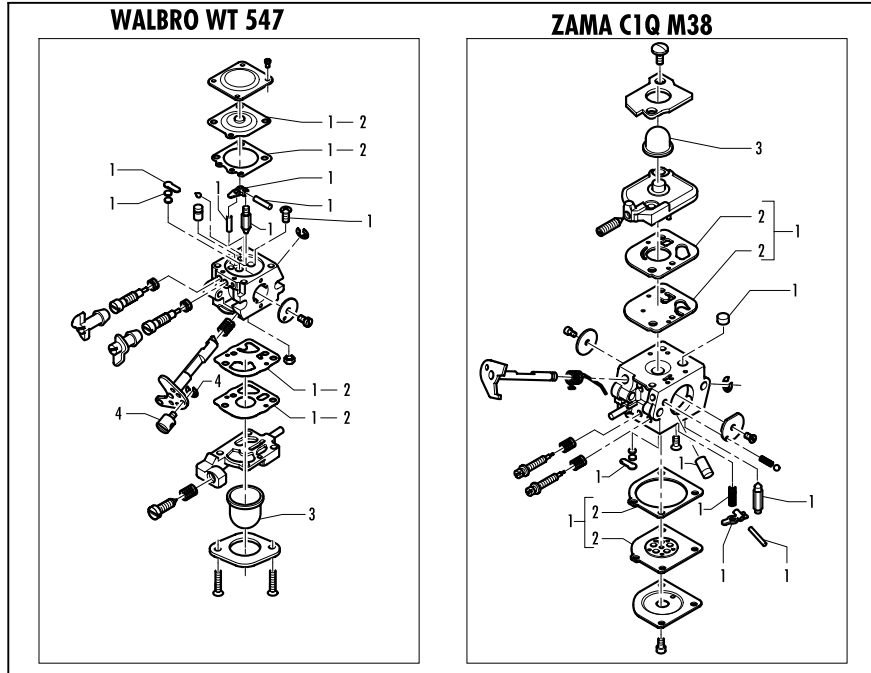


FIGURE 1

| | |
|-------|-----------|
| brand | MCCULLOCH |
|-------|-----------|

| | | |
|------|--------|-----------|
| date | MAY/03 | SHEET 2/4 |
|------|--------|-----------|

| | |
|-------------------|--------|
| Model | Prefix |
| CABRIO 291 | 02 |
| | |
| | |

| |
|------------------|
| Product number |
| 953900445 |
| |
| |

FIGURE 1

| pos | P/N McC | P/N ELX | Qty | DESCRIPTION |
|------|-----------------|-----------|-----|----------------------|
| 2 | 242703 | 538242703 | 1 | filter cover |
| B 3 | 242035 | 538242035 | 1 | air filter |
| 4 | 235808 | 538235808 | 2 | screw 5x50 |
| 5 | 248485 | 538248485 | 1 | filter housing ass'y |
| 6 | • 241769 | 538241769 | 1 | choke lever |
| 7 | • 235822 | 538235822 | 1 | choke shutter spring |
| 8 | • 241622 | 538241622 | 1 | plastic spacer |
| 9 | • 227022 | 538227022 | 2 | spacer |
| 10 | • 241602 | 538241602 | 1 | shutter choke |
| 12 | 235248 | 538235248 | 2 | washer |
| B 13 | 236563 | 538236563 | 1 | fuel cap ass'y |
| A 14 | • 236564 | 538236564 | 1 | cap seal |
| C 15 | FIGURE 4 | | | |
| A 16 | 241600 | 538241600 | 1 | spacer/gasket |
| 17 | 235806 | 538235806 | 2 | screw M5x20 |
| C 18 | 241750 | 538241750 | 1 | spacer |
| B 19 | 242034 | 538242034 | 1 | cylinder gasket |
| 20 | 227568 | 538227568 | 4 | screw M4x20 |
| 21 | 235248 | 538235248 | 1 | washer |
| 25 | 241963 | 538241963 | 2 | screw M4x22 |
| 27 | 242704 | 538242704 | 1 | engine cover |
| C 30 | 242131 | 538242131 | 1 | muffler |
| 32 | 323760 | 538323760 | 1 | muffler shield |
| 33 | 235642 | 538235642 | 2 | nut M5 |
| B 34 | 242036 | 538242036 | 1 | muffler gasket |
| 36 | 241963 | 538241963 | 3 | screw M4x20 |
| C 38 | 242041 | 538242041 | 1 | starter ass'y |
| B 42 | • 241620 | 538241620 | 1 | starter pulley |
| A 43 | • 241746 | 538241746 | 1 | starter rope |
| B 44 | • 241619 | 538241619 | 1 | starter spring |
| 45 | • 235612 | 538235612 | 1 | washer |
| 46 | • 241778 | 538241778 | 1 | starter handle |
| 47 | • 241703 | 538241703 | 1 | washer |
| 48 | • 240862 | 538240862 | 1 | screw M4x18 |
| 49 | 241624 | 538241624 | 1 | M8 nut |
| 50 | 241784 | 538241784 | 1 | starter pawl ass'y |
| A 53 | 92879 | 538092879 | 1 | RDJ8J spare plug |
| C 54 | 242543 | 538242543 | 1 | cylinder |
| 55 | 242037 | 538242037 | 2 | muffler stud bolt |
| B 58 | 241793 | 538241793 | 1 | clutch ass'y |
| 59 | • 241789 | 538241789 | 1 | clutch hub |
| 60 | • 241743 | 538241743 | 2 | clutch shoe |
| A 61 | • 241794 | 538241794 | 2 | spring |
| 62 | 241604 | 538241604 | 1 | clutch dust shield |

| pos | P/N McC | P/N ELX | Qty | DESCRIPTION |
|-------|----------|-----------|-----|-----------------------|
| 63 | 241796 | 538241796 | 1 | flywheel |
| 64 | 235806 | 538235806 | 2 | screw M5x20 |
| 65 | 241606 | 538241606 | 1 | ground wire |
| C 66 | 241749 | 538241749 | 1 | ignition coil |
| 68 | 236322 | 538236322 | 1 | wire protection |
| 71 | 241607 | 538241607 | 1 | fair lead |
| C 72 | 241725 | 538241725 | 1 | mount ass'y |
| 73 | • 235803 | 538235803 | 1 | screw M5x25 |
| 74 | • 229524 | 538229524 | 1 | M5 nut |
| 75 | • 235248 | 538235248 | 1 | washer |
| 76 | • 228260 | 538228260 | 1 | pin |
| 77 | 236981 | 538236981 | 1 | screw 3,5x9,5 |
| 94 | 242029 | 538242029 | 1 | engine side cover |
| 95 | 242003 | 538242003 | 1 | crank shaft ass'y |
| C 96 | • 235742 | 538235742 | 1 | needle bearing |
| C 97 | 249179 | 538249179 | 1 | piston kit |
| B 98 | • 242602 | 538242602 | 1 | piston ring |
| 99 | • 241735 | 538241735 | 1 | piston pin |
| 100 | • 235008 | 538235008 | 2 | snap ring |
| C 103 | 242030 | 538242030 | 2 | grommet/bearing ass'y |
| C 104 | 227631 | 538227631 | 1 | key |
| 106 | 235803 | 538235803 | 4 | screw M5x25 |
| C 109 | 242040 | 538242040 | 1 | fuel tank ass'y |
| B 110 | • 229717 | 538229717 | 1 | hose |
| B 111 | • 229743 | 538229743 | 1 | primer bulb hose |
| A 112 | 93720 | 538093720 | 1 | fuel pick up |
| 114 | 242038 | 538242038 | 1 | tank gasket |
| 115 | 242039 | 538242039 | 1 | gasket |
| 116 | 235248 | 538235248 | 2 | washer |

FIG.4 WALBRO WT 547

| pos | P/N McC | P/N ELX | Qty | DESCRIPTION |
|-----|-----------|-----------|-----|----------------|
| C - | 241601 | 538241601 | | carb. |
| B 1 | • 324013 | 538324013 | 1 | K20 rep.kit |
| A 2 | •• 324009 | 538324009 | 1 | D20 gasket kit |
| C 3 | • 225834 | 538225834 | 1 | primer bulb |
| 4 | • 224466 | 538224466 | 1 | swivel kit |

FIG.4 ZAMA C1Q M38

| pos | P/N McC | P/N ELX | Qty | DESCRIPTION |
|-----|-----------|-----------|-----|------------------|
| C - | 241824 | 538241824 | | carb. |
| B 1 | • 300465 | 538300465 | 1 | RB-28 rep.kit |
| A 2 | •• 300473 | 538300473 | 1 | diaph/gasket kit |
| C 3 | • 246946 | 538246946 | 1 | primer bulb |

A= ALTA ROTAZIONE
B=MEDIA ROTAZIONE
C=BASSA ROTAZIONE

A=HIGH MOVING
B=MEDIUM MOVING
C=SLOW MOVING

A=HAUTE DEMANDE
B=MOYENNE DEMANDE
C=BASSE DEMANDE

A=GROßE NACHFRAGE
B=MITTELMAEBIGE
C=WENIGE NACHFRAGE

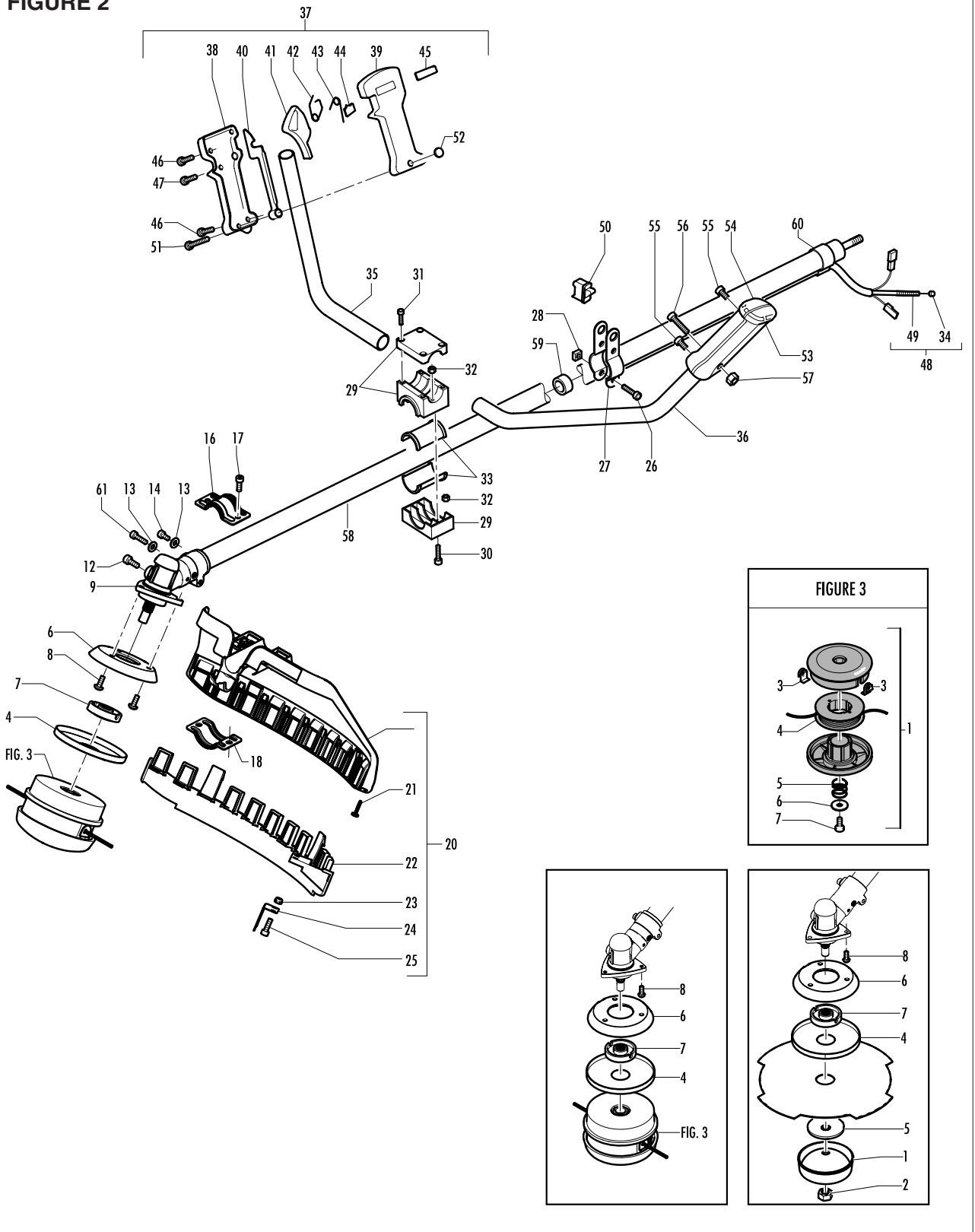
| | |
|-------|------------------|
| brand | MCCULLOCH |
|-------|------------------|

| | | |
|------|--------|-----------|
| date | MAY/03 | SHEET 3/4 |
|------|--------|-----------|

| | |
|-------------------|--------|
| Model | Prefix |
| CABRIO 291 | 02 |
| | |
| | |

| |
|------------------|
| Product number |
| 953900445 |
| |
| |

FIGURE 2



| | |
|-------|-----------|
| brand | MCCULLOCH |
|-------|-----------|

| | | |
|------|--------|-----------|
| date | MAY/03 | SHEET 4/4 |
|------|--------|-----------|

| | |
|-------------------|--------|
| Model | Prefix |
| CABRIO 291 | 02 |
| | |
| | |

| |
|------------------|
| Product number |
| 953900445 |
| |
| |

FIGURE 2

| pos | P/N McC | P/N ELX | Qty | DESCRIPTION |
|-----|----------|-----------|-----|--------------------|
| 1 | 236596 | 538236596 | 1 | hub |
| 2 | 240481 | 538240481 | 1 | M10x1.25 nut |
| 4 | 241155 | 538241155 | 1 | string head shield |
| 5 | 241006 | 538241006 | 1 | plate |
| 6 | 242729 | 538242729 | 1 | flange adapter |
| 7 | 242753 | 538242753 | 1 | flange |
| 8 | 240688 | 538240688 | 3 | screw/washer M5x14 |
| 9 | 242728 | 538242728 | 1 | gear box |
| 10 | FIGURE 3 | | 1 | string head |
| 12 | • 240151 | 538240151 | 1 | screw M8x10 |
| 13 | 236529 | 538236529 | 3 | split washer |
| 14 | 235804 | 538235804 | 2 | M5x30 screw |
| 16 | 242629 | 538242629 | 1 | upper clamp |
| 17 | 227563 | 538227563 | 2 | screw M5x16 |
| 18 | 242752 | 538242752 | 1 | clamp lower |
| 20 | 248959 | 538248959 | 1 | guard ass'y |
| 21 | 240862 | 538240862 | 1 | screw M4x18 |
| 22 | 242644 | 538242644 | 1 | guard extension |
| 23 | 229208 | 538229208 | 2 | nut |
| 24 | 241973 | 538241973 | 1 | line cutter |
| 25 | 227563 | 538227563 | 2 | screw M5x16 |
| 26 | 235911 | 538235911 | 2 | screw M6x12 |
| 27 | 228152 | 538228152 | 2 | hook |
| 28 | 236642 | 538236642 | 2 | nut |
| 29 | 241685 | 538241685 | 1 | handle clamp ass'y |
| 30 | • 235921 | 538235921 | 2 | screw M6x30 |
| 31 | • 236558 | 538236558 | 4 | screw M6x40 |
| 32 | • 235912 | 538235912 | 6 | nut |
| 33 | • 241684 | 538241684 | 2 | 1/2 bearing |
| 34 | 235912 | 538235912 | 2 | nut |
| 35 | 229831 | 538229831 | 1 | handle bar R (1/2) |
| 36 | 229832 | 538229832 | 1 | handle bar L (1/2) |
| 37 | 227089 | 538227089 | 1 | trigger ass'y |
| 38 | • 241293 | 538241293 | 1 | right lever box |
| 39 | • 241294 | 538241294 | 1 | left lever box |
| 40 | • 229820 | 538229820 | 1 | safety trigger |
| 41 | • 241295 | 538241295 | 1 | trigger |
| 42 | • 240091 | 538240091 | 1 | spring |
| 43 | • 229973 | 538229973 | 1 | spring |
| 44 | • 229823 | 538229823 | 1 | cap |
| 45 | • 229824 | 538229824 | 1 | trigger |
| 46 | • 240618 | 538240618 | 2 | screw 3x16 |

| pos | P/N McC | P/N ELX | Qty | DESCRIPTION |
|------|-----------|-----------|-----|-------------------|
| 47 | • 240833 | 538240833 | 3 | screw 3x20 |
| C 48 | • 227082 | 538227082 | 1 | wires ass'y |
| C 49 | •• 227054 | 538227054 | 1 | throttle |
| C 50 | •• 236394 | 538236394 | 1 | switch |
| 51 | 235804 | 538235804 | 1 | screw M5x30 |
| 52 | 235216 | 538235216 | 1 | nut |
| 53 | 229984 | 538229984 | 1 | left handle 1/2 |
| 54 | 229985 | 538229985 | 1 | right handle 1/2 |
| 55 | 240833 | 538240833 | 2 | screw M3x20 |
| 56 | 235212 | 538235212 | 1 | screw 5x35 |
| 57 | 235216 | 538235216 | 1 | nut |
| 58 | 242442 | 538242442 | 1 | outer shaft ass'y |
| 59 | • 241536 | 538241536 | 5 | bushing ass'y |
| 60 | 229850 | 538229850 | 2 | harness ring |
| 61 | 236381 | 538236381 | 1 | M5x10 screw |

FIGURE 3

| A | pos | P/N McC | P/N ELX | Qty | DESCRIPTION |
|---|-----|-----------|------------|-----|---------------|
| A | 1 | 538249174 | 538249174 | | string head |
| B | 3 | • 241154 | 538241154 | 2 | eyelet |
| B | 4 | • 248583B | 538248583B | 1 | 2 lines spool |
| | 5 | • 240852 | 538240852 | 1 | spring |
| | 6 | • 5210 | 538005210 | 1 | locking nut |
| | 7 | • 229712 | 538229712 | 1 | screw 5x16 |

A= ALTA ROTAZIONE
B=MEDIA ROTAZIONE
C=BASSA ROTAZIONE

A=HIGH MOVING
B=MEDIUM MOVING
C=SLOW MOVING

A=HAUTE DEMANDE
B=MOYENNE DEMANDE
C=BASSE DEMANDE

A=GROBE NACHFRAGE
B=MITTELMAEßIGE
C=WENIGE NACHFRAGE