

HUSQVARNA OUTDOOR PRODUCTS ITALIA

| PNC | Type/ Prefix/ nd | Model | Brand |
|------------|---------------------------------|-------------------|--------------|
| 953900764 | 01 | ELITE 2.510 B-PRO | McCulloch |
| 953900782 | 01 | BA 437 BT | Partner |
| 953900784 | 01 | BA 477 BT | Partner |

Number of Pages 1 of 5

| | |
|--|-----------------------------|
| Factory: IIQ - Valmadrera | Product Group: OP 93 |
| Publication Number: MIPL2007_V100000005 | Petrol Portable |
| Publication Date: 06/03/07 | Sub Group 9433 |

FIGURE 1

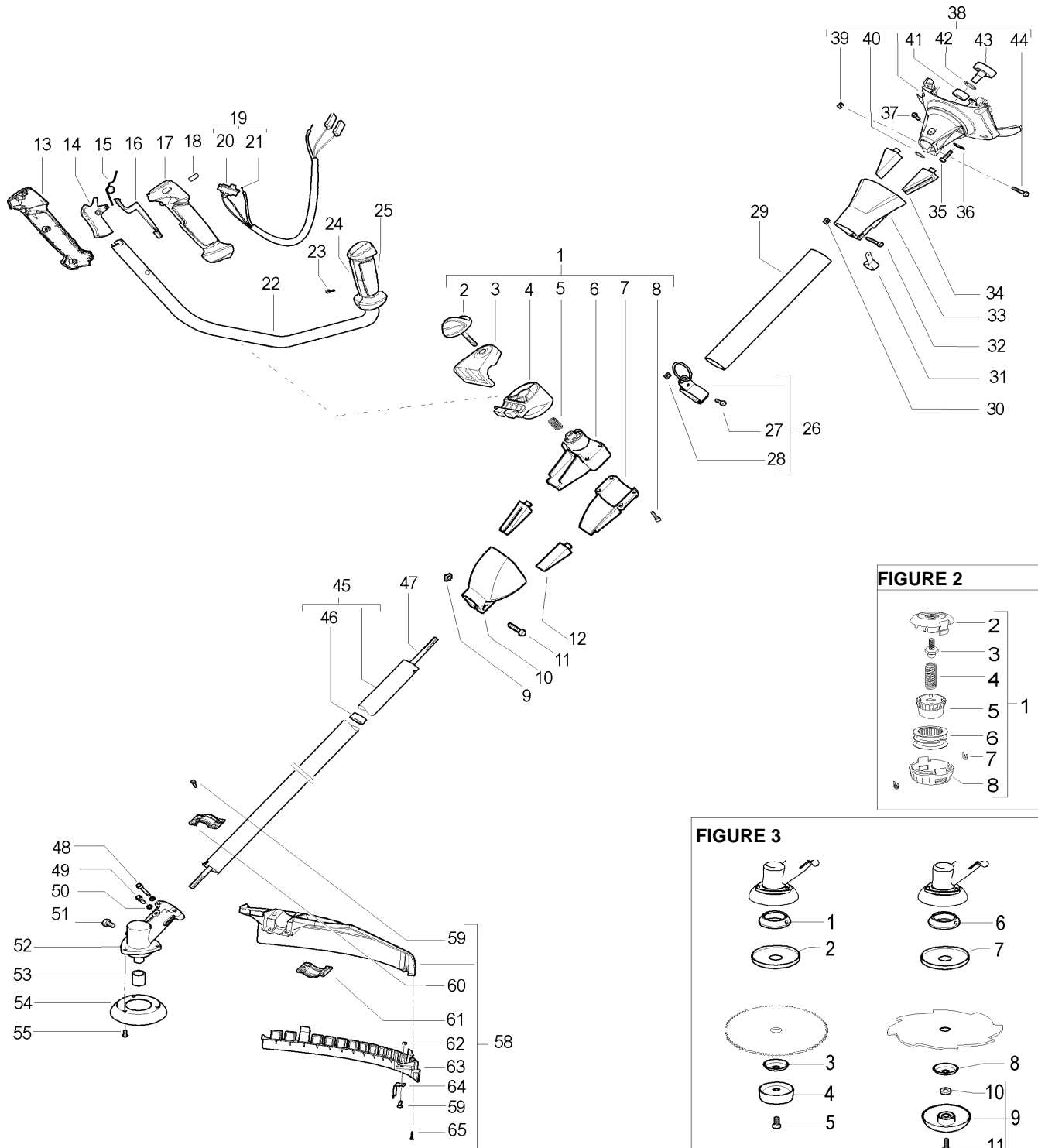


FIGURE 2

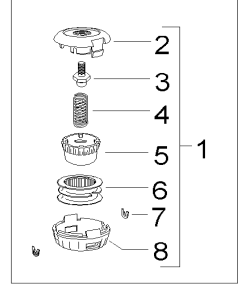
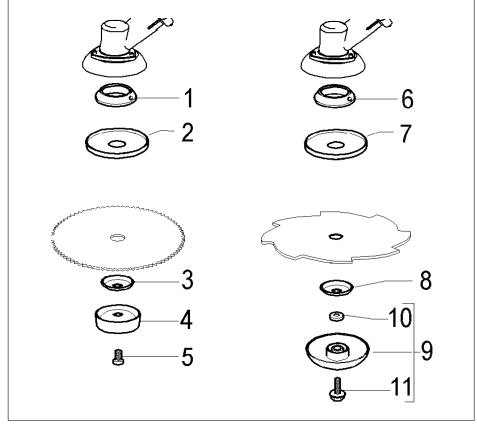


FIGURE 3



| Item | P/N McC | P/N ELX | Qty | DESCRIPTION |
|-----------------|----------|-----------|-----|-----------------------------|
| FIGURE 1 | | | | |
| 1 | 243066 | 538243066 | 1 | clamp ass'y |
| 2 | • 242917 | 538242917 | 1 | knob |
| 3 | • 242898 | 538242898 | 1 | handle clamp (upper half) |
| 4 | • 242897 | 538242897 | 1 | handle clamp (lower half) |
| 5 | • 242901 | 538242901 | 1 | spring |
| 6 | • 243123 | 538243123 | 1 | shaft clamp (upper half) |
| 7 | • 242199 | 538242199 | 1 | shaft clamp (lower half) |
| 8 | • 235803 | 538235803 | 4 | screw m5x25 |
| 9 | 236642 | 538236642 | 1 | nut m6 |
| 10 | 242202 | 538242202 | 1 | clamp |
| 11 | 235910 | 538235910 | 1 | screw 6x25 |
| 12 | 242196 | 538242196 | 2 | antivibration |
| 13 | 242533 | 538242533 | 1 | right handle (right half) |
| 14 | 242537 | 538242537 | 1 | throttle trigger |
| 15 | 242540 | 538242540 | 1 | spring |
| 16 | 242538 | 538242538 | 1 | safety trigger |
| 17 | 242534 | 538242534 | 1 | right handle (left half) |
| 18 | 242648 | 538242648 | 1 | cap |
| C 19 | 242607 | 538242607 | 1 | wires ass'y |
| C 20 | • 242439 | 538242439 | 1 | switch |
| C 21 | • 243061 | 538243061 | 1 | throttle cable |
| 22 | 249249 | 538249249 | 1 | handle bar |
| 23 | 240862 | 538240862 | 5 | screw 4x18 - self threading |
| 24 | 242535 | 538242535 | 1 | left handle (right half) |
| 25 | 242536 | 538242536 | 1 | left handle (left half) |
| 26 | 228011 | 538228011 | 1 | harness ring ass'y |
| 27 | • 235911 | 538235911 | 1 | screw m6x12 |
| 28 | • 236642 | 538236642 | 1 | nut m6 |
| 29 | 242726 | 538242726 | 1 | outer shaft |
| 30 | 236642 | 538236642 | 1 | nut m6 |
| 31 | 241480 | 538241480 | 1 | wires fastener |
| 32 | 235910 | 538235910 | 1 | screw m6x25 |
| 33 | 242197 | 538242197 | 1 | joint cover |
| 34 | 242196 | 538242196 | 2 | antivibration |
| 35 | 235804 | 538235804 | 4 | screw m5x30 |
| 36 | 228139 | 538228139 | 1 | male fast-on |
| 37 | 240688 | 538240688 | 1 | screw m5x14 + washer |
| 38 | 242626 | 538242626 | 1 | joint ass'y |
| 39 | • 236642 | 538236642 | 1 | nut m6 |
| 40 | • 236378 | 538236378 | 1 | seeger D. 15 |
| 41 | • 235918 | 538235918 | 1 | ball bearing |
| 42 | • 235899 | 538235899 | 1 | seeger D. 32 |
| 43 | • 227284 | 538227284 | 1 | clutch drum |
| 44 | • 235910 | 538235910 | 1 | screw m6x25 |
| 45 | 240830 | 538240830 | 1 | inner shaft ass'y |
| 46 | • 236383 | 538236383 | 5 | bushing ass'y |
| 47 | 229829 | 538229829 | 1 | drive shaft |
| 48 | 235804 | 538235804 | 2 | screw m5x30 |

| Item | P/N McC | P/N ELX | Qty | DESCRIPTION |
|------|----------|-----------|-----|-----------------------------|
| 49 | 236381 | 538236381 | 1 | screw m5x10 |
| 50 | 236529 | 538236529 | 3 | grower |
| 51 | 240151 | 538240151 | 1 | screw M8x10 |
| 52 | 240824 | 538240824 | 1 | gear box ass'y |
| 53 | 247272 | 538247272 | 1 | spacer |
| 54 | 240767 | 538240767 | 1 | flange guard |
| 55 | 240688 | 538240688 | 3 | screw+washer |
| 56 | 242410 | 538242410 | 1 | flange |
| 57 | 241155 | 538241155 | 1 | string head shield |
| A 58 | 248960 | 538248960 | 1 | safety guard ass'y |
| 59 | • 227563 | 538227563 | 4 | screw M5x18 |
| 60 | • 242636 | 538242636 | 1 | clamp (upper half) |
| 61 | • 242752 | 538242752 | 1 | clamp (lower half) |
| 62 | • 229208 | 538229208 | 2 | nut m5 |
| 63 | • 242630 | 538242630 | 1 | string head guard extension |
| 64 | • 241973 | 538241973 | 1 | line cutter |
| 65 | • 240862 | 538240862 | 1 | screw 4x18 - self threading |

| FIGURE 2 | | | | |
|-----------------|-------------|-----------|---|----------------------|
| A 1 | 531025002 | 531025002 | 1 | P 35 trimmer head |
| 2 | • 537421501 | 537421501 | 1 | body |
| 3 | • 537427901 | 537427901 | 1 | adapler P35 |
| C 4 | • 537186001 | 537186001 | 1 | spring T35 |
| C 5 | • 537421801 | 537421801 | 1 | knob |
| C 6 | • 537421701 | 537421701 | 1 | spool (without line) |
| C 7 | • 537419701 | 537419701 | 2 | bushing |
| 8 | • 537421601 | 537421601 | 1 | cover |

| FIGURE 3 | | | | |
|-----------------|----------|-----------|---|----------------|
| A 1 | 242475 | 538242475 | 1 | flange |
| A 2 | 241155 | 538241155 | 1 | grass shield |
| A 3 | 229834 | 538229834 | 1 | flange |
| A 4 | 236596 | 538236596 | 1 | cup |
| A 5 | 229842 | 538229842 | 1 | cup screw |
| A 6 | 242410 | 538242410 | 1 | flange |
| A 7 | 241155 | 538241155 | 1 | grass shield |
| A 8 | 229834 | 538229834 | 1 | flange |
| A 9 | 240809 | 538040809 | 1 | idle cup |
| 10 | • 240807 | 538240807 | 1 | spacer |
| A 11 | • 240806 | 538240806 | 1 | idle cup screw |

A=ALTA ROTAZIONE
 B=MEDIA ROTAZIONE
 C=ALTA ROTAZIONE
 NUOVI CODICI

A=HIGH MOVING
 B=MEDIUM MOVING
 C=SLOW MOVING
 NEW P. NUMBERS

A=HAUTE DEMANDE
 B=MOYENNE DEMANDE
 C=BASSE DEMANDE
 NOUVELLES REFERENCES

A=GROBE NACHFRAGE
 B=MITTELMAESSIGE
 C=WENIGE NACHFRAGE
 NEU CODEX

FIGURE 4

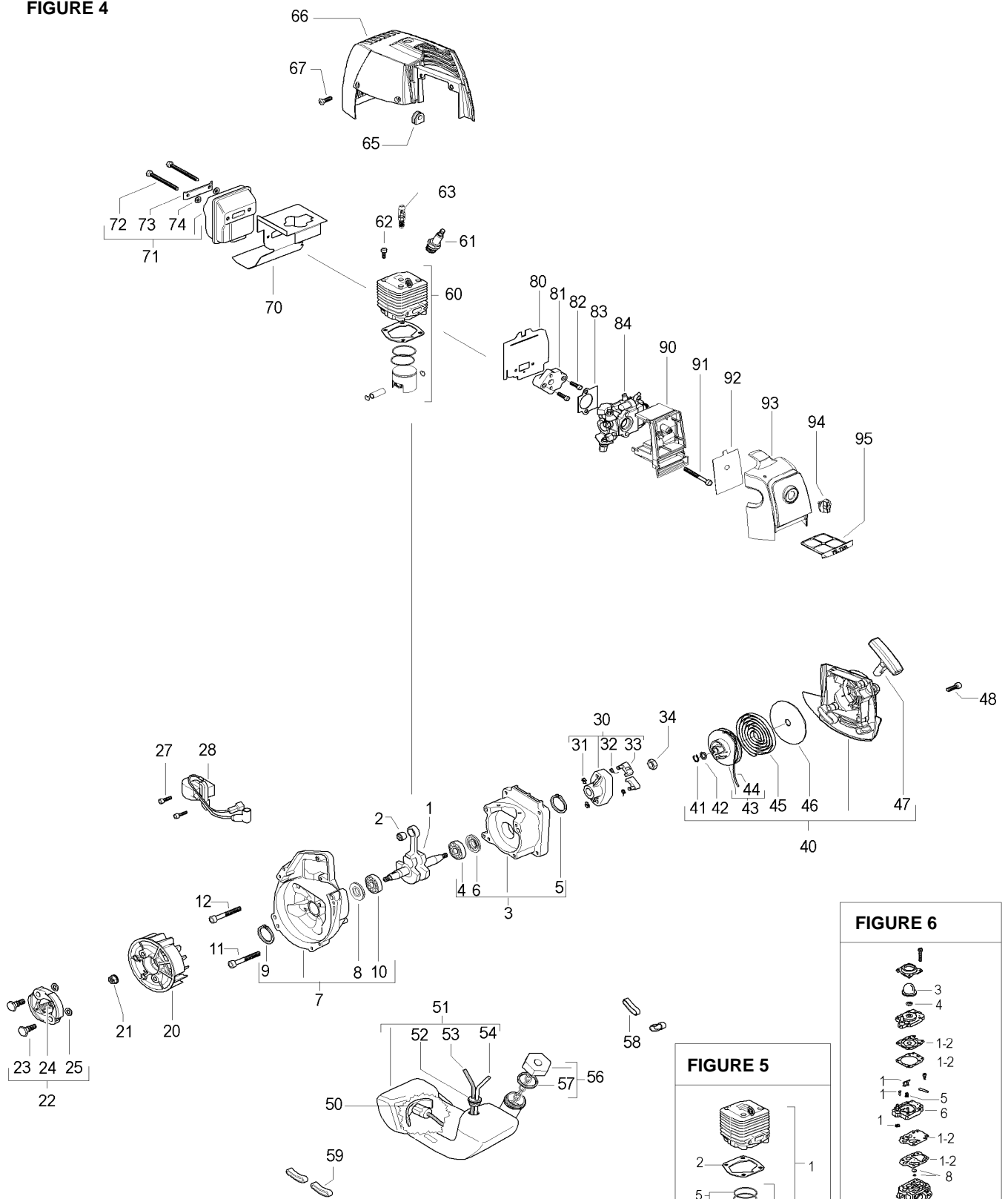


FIGURE 6

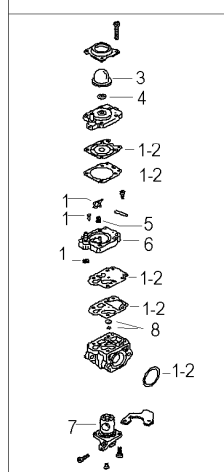
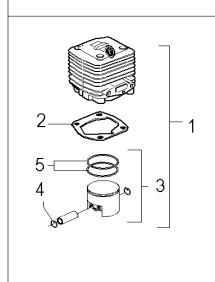


FIGURE 5



| Item | P/N McC | P/N ELX | Qty | DESCRIPTION |
|-----------------|-----------------|-----------|-----|------------------------------|
| FIGURE 4 | | | | |
| 1 | 243725 | 538243725 | 1 | crankshaft ass'y |
| C 2 | 501451601 | 501451601 | 1 | needle bearing |
| 3 | 250075 | 538250075 | 1 | Carter kit (starter) |
| 4 | • 227541 | 538227541 | 1 | ball bearing |
| 5 | • 240982 | 538240982 | 1 | seeger ring |
| C 6 | • 243174 | 538243174 | 1 | seal |
| 7 | 250074 | 538250074 | 1 | Carter kit (flywheel) |
| C 8 | • 243174 | 538243174 | 1 | seal |
| 9 | • 240982 | 538240982 | 1 | seeger ring |
| 10 | • 227541 | 538227541 | 1 | ball bearing |
| 11 | 235804 | 538235804 | 2 | screw M5x30 |
| 12 | 235808 | 538235808 | 2 | screw M5 X 50 TCE |
| 20 | 242673 | 538242673 | 1 | flywheel |
| 21 | 235218 | 538235218 | 1 | nut M8 |
| B 22 | 248808 | 538248808 | 1 | clutch assy |
| 23 | • 242369 | 538242369 | 2 | clutch rod |
| C 24 | • 241270 | 538241270 | 1 | clutch spring elite |
| 25 | • 241076 | 538241076 | 2 | washer |
| 27 | 235806 | 538235806 | 2 | screw M5 X 20 TCE |
| C 28 | 242782 | 538242782 | 1 | ignition coil |
| 30 | 242800 | 538242800 | 1 | starter pawl ass'y |
| 31 | • 111088 | 538111088 | 2 | snap ring |
| B 32 | • 241782 | 538241782 | 2 | spring |
| B 33 | • 241781 | 538241781 | 2 | pawl |
| 34 | 235218 | 538235218 | 1 | nut M8 |
| C 40 | 242806 | 538242806 | 1 | starter assy |
| 41 | • 242786 | 538242786 | 1 | seeger |
| 42 | • 227470 | 538227470 | 1 | washer |
| B 43 | • 249163 | 538249163 | 1 | pulley/rope assy |
| A 44 | •• 227703 | 538227703 | 1 | rope |
| B 45 | • 227300 | 538227300 | 1 | spring rewind |
| 46 | • 227467 | 538227467 | 1 | shield spring |
| 47 | • 240884 | 538240884 | 1 | starter-handle |
| 48 | 235214 | 538235214 | 4 | screw M6x20 |
| A 50 | 240452 | 538240452 | 1 | pick up fuel |
| C 51 | 241541 | 538241541 | 1 | tank mix ass. |
| C 52 | • 235675 | 538235675 | 1 | fueltank grommet |
| B 53 | • 229809 | 538229809 | 1 | hose-fuel mm245 |
| B 54 | • 229743 | 538229743 | 1 | hose fuel mm150 |
| B 56 | 242484 | 538242484 | 1 | fuel cap assy |
| A 57 | • 236564 | 538236564 | 1 | cap gasket |
| 58 | 242632 | 538242632 | 2 | grommet fuel tank elite |
| 59 | 241248 | 538241248 | 2 | fuel tank grommet (flywheel) |
| C 60 | FIGURE 2 | | | |
| A 61 | 92878 | 538092878 | 1 | spark plug RDJ6J |
| 62 | 227565 | 538227565 | 4 | screw M5X25 |
| 63 | 94273 | 538094273 | 1 | decompressor valve |
| 65 | 236322 | 538236322 | 1 | grommet |
| 66 | 249420 | 538249420 | 1 | engine cover |
| 67 | 240688 | 538240688 | 2 | screw m5x14 + washer |
| C 70 | 242858 | 538242858 | 1 | gasket |
| C 71 | 241432 | 538241432 | 1 | muffler assy elite |
| 72 | • 227274 | 538227274 | 2 | screw M5X60 |
| 73 | • 227236 | 538227236 | 1 | clamp |
| 74 | • 227259 | 538227259 | 2 | washer |

| Item | P/N McC | P/N ELX | Qty | DESCRIPTION |
|------|-----------------|-----------|-----|-----------------------|
| C 80 | 242855 | 538242855 | 1 | gasket |
| C 81 | 241481 | 538241481 | 1 | carb. Spacer |
| 82 | 235806 | 538235806 | 2 | screw M5 X 20 TCE |
| A 83 | 241281 | 538241281 | 1 | gasket |
| C 84 | FIGURE 3 | | | |
| 90 | 249981 | 538249981 | 1 | air filter box |
| 91 | 235808 | 538235808 | 2 | screw M5 X 50 TCE |
| B 92 | 243782 | 538243782 | 1 | air filter 1 (fabric) |
| 93 | 243750 | 538243750 | 1 | air filter cover |
| 94 | 243765 | 538243765 | 1 | knob |
| B 95 | 243851 | 538243851 | 1 | air filter 2 (mesh) |

| FIGURE 5 | | | | |
|-----------------|--------------|-----------|---|---------------------------|
| C 1 | 250072 | 538250072 | 1 | cylinder/piston kit 43 cc |
| B 2 | • 242366 | 538242366 | 1 | gasket 0.8 mm |
| B 3 | • 249709 | 538249709 | 1 | piston kit 43 cc |
| 4 | •• 737441000 | 737441000 | 2 | retaining ring |
| B 5 | •• 240085 | 538240085 | 1 | piston ring |
| C 1 | 250073 | 538250073 | 1 | cylinder/piston kit 46 cc |
| B 2 | • 242366 | 538242366 | 1 | gasket 0.8 mm |
| B 3 | • 249710 | 538249710 | 1 | piston kit 46 cc |
| 4 | •• 737441000 | 737441000 | 2 | retaining ring |
| B 5 | •• 240353 | 538240353 | 1 | piston ring |

| FIGURE 6 | | | | |
|-----------------|-----------|-----------|---|----------------------|
| C - | 241268 | 538241268 | 1 | carburettor WJY 183A |
| B 1 | • 247955 | 538247955 | 1 | repair kit K20 WYJ |
| A 2 | •• 247956 | 538247956 | 1 | gasket kit D20 WYJ |
| C 3 | • 225834 | 538225834 | 1 | primer |
| C 4 | • 247957 | 538247957 | 1 | valve |
| C 5 | • 247958 | 538247958 | 1 | spring |
| C 6 | • 247962 | 538247962 | 1 | pumping body |
| C 7 | • 247961 | 538247961 | 1 | valve |
| C 8 | • 247959 | 538247959 | 1 | jet |

A=ALTA ROTAZIONE
 B=MEDIA ROTAZIONE
 C=ALTA ROTAZIONE
 NUOVI CODICI

A=HIGH MOVING
 B=MEDIUM MOVING
 C=SLOW MOVING
 NEW P. NUMBERS

A=HAUTE DEMANDE
 B=MOYENNE DEMANDE
 C=BASSE DEMANDE
 NOUVELLES REFERENCES

A=GROBE NACHFRAGE
 B=MITTELMAESSIGE
 C=WENIGE NACHFRAGE
 NEU CODEX