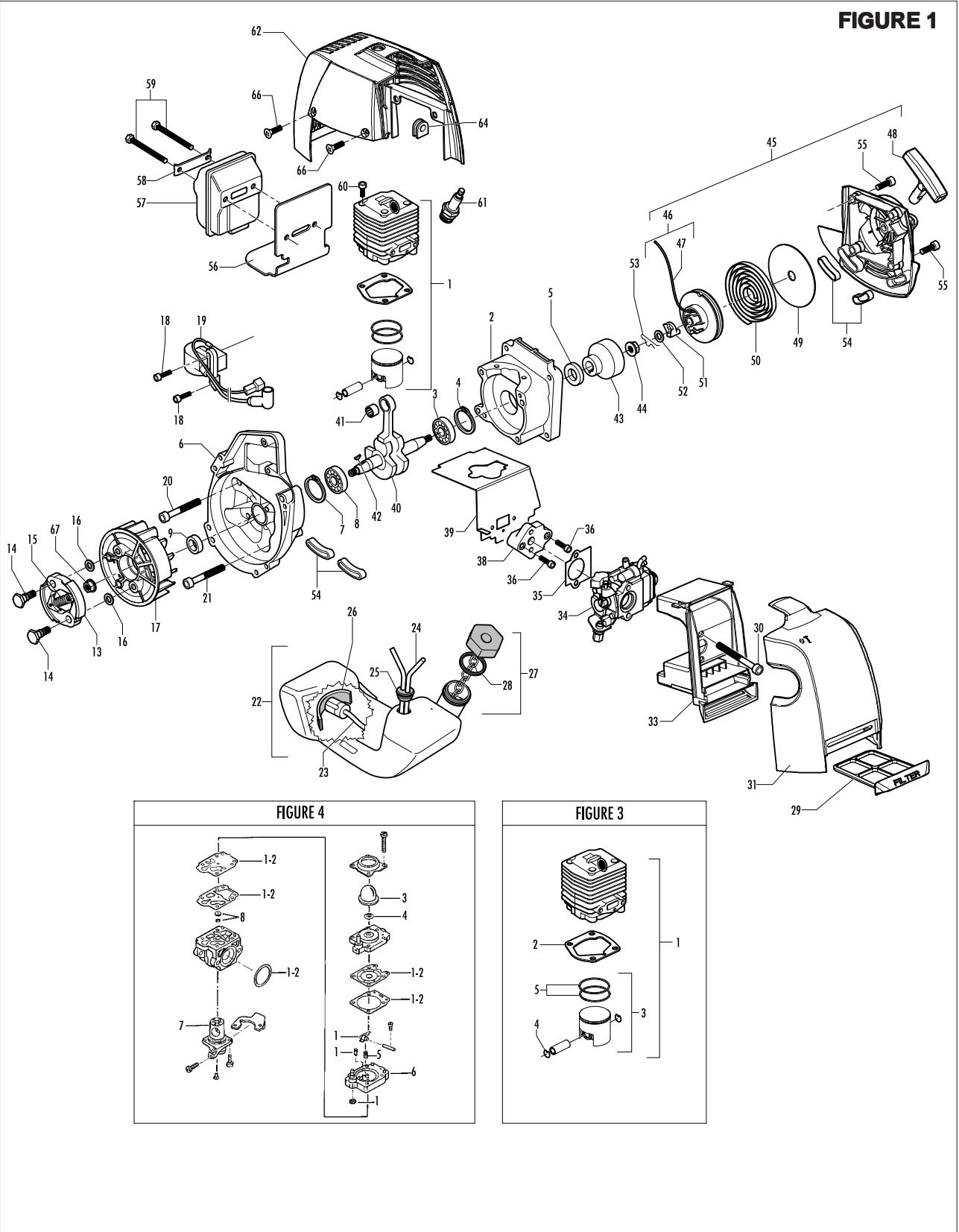


|       |                  |
|-------|------------------|
| brand | <b>MCCULLOCH</b> |
|-------|------------------|

|      |        |           |
|------|--------|-----------|
| date | APR/03 | SHEET 1/4 |
|------|--------|-----------|

|                   |        |
|-------------------|--------|
| Model             | Prefix |
| <b>ELITE 3325</b> | 01     |
|                   |        |
|                   |        |

|                  |
|------------------|
| Product number   |
| <b>953900386</b> |
|                  |
|                  |



|       |                  |
|-------|------------------|
| brand | <b>MCCULLOCH</b> |
|-------|------------------|

|      |        |           |
|------|--------|-----------|
| date | APR/03 | SHEET 2/4 |
|------|--------|-----------|

|                   |        |
|-------------------|--------|
| Model             | Prefix |
| <b>ELITE 3325</b> | 01     |
|                   |        |
|                   |        |

|                  |
|------------------|
| Product number   |
| <b>953900386</b> |
|                  |
|                  |

**FIGURE 1**

| pos         | P/N McC         | P/N ELX   | Qty | DESCRIPTION               |
|-------------|-----------------|-----------|-----|---------------------------|
| <b>C 1</b>  | <b>FIGURE 3</b> |           |     |                           |
| 2           | 247936          | 538247936 | 1   | Carter kit (starter)      |
| 3           | ● 235900        | 538235900 | 1   | ball bearing 6002 15/32/9 |
| 4           | ● 235899        | 538235899 | 1   | seeger ring               |
| <b>C 5</b>  | ● 228872        | 538228872 | 1   | seal 13-32-5 (S7)         |
| 6           | 247935          | 538247935 | 1   | Carter kit (flywheel)     |
| 7           | ● 235899        | 538235899 | 1   | seeger ring               |
| 8           | ● 235900        | 538235900 | 1   | ball bearing 6002 15/32/9 |
| <b>C 9</b>  | ● 228872        | 538228872 | 1   | seal 13-32-5 (S7)         |
| <b>B 13</b> | 247937          | 538247937 | 1   | clutch assy               |
| 14          | ● 241269        | 538241269 | 2   | clutch rod                |
| <b>C 15</b> | ● 241270        | 538241270 | 1   | clutch spring elite       |
| 16          | 236956          | 538236956 | 2   | washer                    |
| 17          | 241240          | 538241240 | 1   | flywheel                  |
| 18          | 235806          | 538235806 | 2   | screw M5 X 20 TCE         |
| <b>C 19</b> | 241298          | 538241298 | 1   | ignition coil             |
| 20          | 235808          | 538235808 | 2   | screw M5 X 50 TCE         |
| 21          | 235804          | 538235804 | 2   | screw M5x30               |
| <b>C 22</b> | 241541          | 538241541 | 1   | tank mix ass.             |
| <b>B 23</b> | ● 229809        | 538229809 | 1   | hose-fuel mm245           |
| <b>B 24</b> | ● 229743        | 538229743 | 1   | hose fuel mm150           |
| <b>C 25</b> | ● 235675        | 538235675 | 1   | fueltank grommet          |
| <b>A 26</b> | 240452          | 538240452 | 1   | pick up fuel              |
| <b>B 27</b> | 242484          | 538242484 | 1   | fuel cap assy             |
| <b>A 28</b> | ● 236564        | 538236564 | 1   | cap gasket                |
| <b>B 29</b> | 242581          | 538242581 | 1   | air filter                |
| 30          | 235808          | 538235808 | 2   | screw M5 X 50 TCE         |
| 31          | 242580          | 538242580 | 1   | air filter cover          |
| 33          | 249136          | 538249136 | 1   | box air filter            |
| <b>C 34</b> | <b>FIGURE 4</b> |           |     |                           |
| <b>A 35</b> | 241281          | 538241281 | 1   | gasket                    |
| 36          | 235806          | 538235806 | 2   | screw M5 X 20 TCE         |
| <b>C 38</b> | 241481          | 538241481 | 1   | carb. Spacer              |
| <b>C 39</b> | 241428          | 538241428 | 1   | gasket                    |
| 40          | 241266          | 538241266 | 1   | crankshaft                |
| <b>C 41</b> | 235742          | 538235742 | 1   | bearing-needle            |
| <b>C 42</b> | 227631          | 538227631 | 1   | key                       |
| 43          | 241223          | 538241223 | 1   | starter holder            |
| 44          | 235218          | 538235218 | 1   | nut M8                    |
| <b>C 45</b> | 242623          | 538242623 | 1   | starter assy              |
| <b>B 46</b> | ● 227194        | 538227194 | 1   | pulley/rope               |
| <b>A 47</b> | ●● 227703       | 538227703 | 1   | rope                      |
| 48          | ● 240884        | 538240884 | 1   | starter-handle            |

| pos         | P/N McC  | P/N ELX   | Qty | DESCRIPTION             |
|-------------|----------|-----------|-----|-------------------------|
| 49          | ● 227467 | 538227467 | 1   | shield spring           |
| <b>B 50</b> | ● 227300 | 538227300 | 1   | spring rewind           |
| <b>B 51</b> | ● 240492 | 538240492 | 1   | starter pawl            |
| <b>B 52</b> | ● 227470 | 538227470 | 1   | spacer-drum             |
| 53          | ● 240485 | 538240485 | 1   | retaining spring        |
| 54          | 242632   | 538242632 | 4   | grommet fuel tank elite |
| 55          | 236527   | 538236527 | 4   | screw M6x16             |
| <b>C 56</b> | 242645   | 538242645 | 1   | gasket                  |
| <b>C 57</b> | 241432   | 538241432 | 1   | muffler assy elite      |
| 58          | ● 227236 | 538227236 | 1   | clamp                   |
| 59          | ● 227274 | 538227274 | 2   | screw M5X60             |
| 60          | 227565   | 538227565 | 4   | screw M5X25             |
| <b>A 61</b> | 92879    | 538092879 | 1   | spark RDJ8J             |
| 62          | 242583   | 538245283 | 1   | engine cover            |
| 64          | 236322   | 538236322 | 1   | grommet                 |
| 66          | 240688   | 538240688 | 2   | screw + washer M5X14    |
| 67          | 235218   | 538235218 | 1   | nut                     |

**FIGURE 3 34cc**

|            |           |           |   |                       |
|------------|-----------|-----------|---|-----------------------|
| <b>C 1</b> | 247942    | 538247942 | 1 | cylind/pist Kit 35 cc |
| <b>B 2</b> | ● 227286  | 538227286 | 1 | gasket                |
| <b>C 3</b> | ● 235799  | 538235799 | 1 | piston kit 35 cc      |
| 4          | ●● 235008 | 538235008 | 2 | retaining ring        |
| <b>B 5</b> | ●● 235677 | 538235677 | 2 | piston ring           |

**FIGURE 4 WALBRO WYJ 183A**

|            |           |           |   |                      |
|------------|-----------|-----------|---|----------------------|
| <b>C -</b> | 241268    | 538241268 | 1 | carburettor WJY 183A |
| <b>B 1</b> | ● 247955  | 538247955 | 1 | repair kit K20 WYJ   |
| <b>A 2</b> | ●● 247956 | 538247956 | 1 | gasket kit D20 WYJ   |
| <b>C 3</b> | ● 225834  | 538225834 | 1 | primer               |
| <b>C 4</b> | ● 247957  | 538247957 | 1 | valve                |
| <b>C 5</b> | ● 247958  | 538247958 | 1 | spring               |
| <b>C 6</b> | ● 247962  | 538247962 | 1 | pumping body         |
| <b>C 7</b> | ● 247961  | 538247961 | 1 | valve                |
| <b>C 8</b> | ● 247959  | 538247960 | 1 | jet                  |

A=ALTA ROTAZIONE  
B=MEDIA ROTAZIONE  
C=BASSA ROTAZIONE

A=HIGH MOVING  
B=MEDIUM MOVING  
C=SLOW MOVING

A=HAUTE DEMANDE  
B=MOYENNE DEMANDE  
C=BASSE DEMANDE

A=GROSSE NACHFRAGE  
B=MITTELMÄßIGE  
C=WENIGE NACHFRAGE

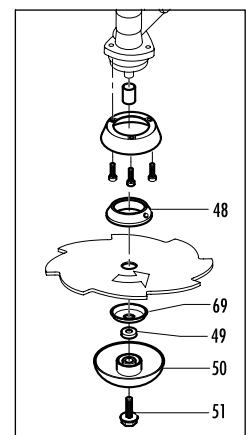
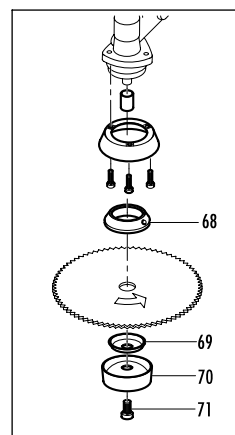
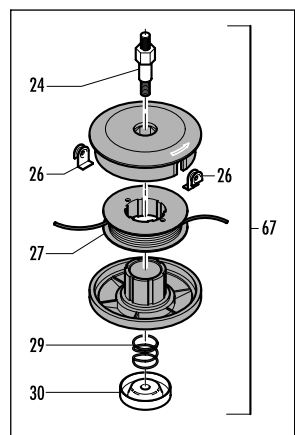
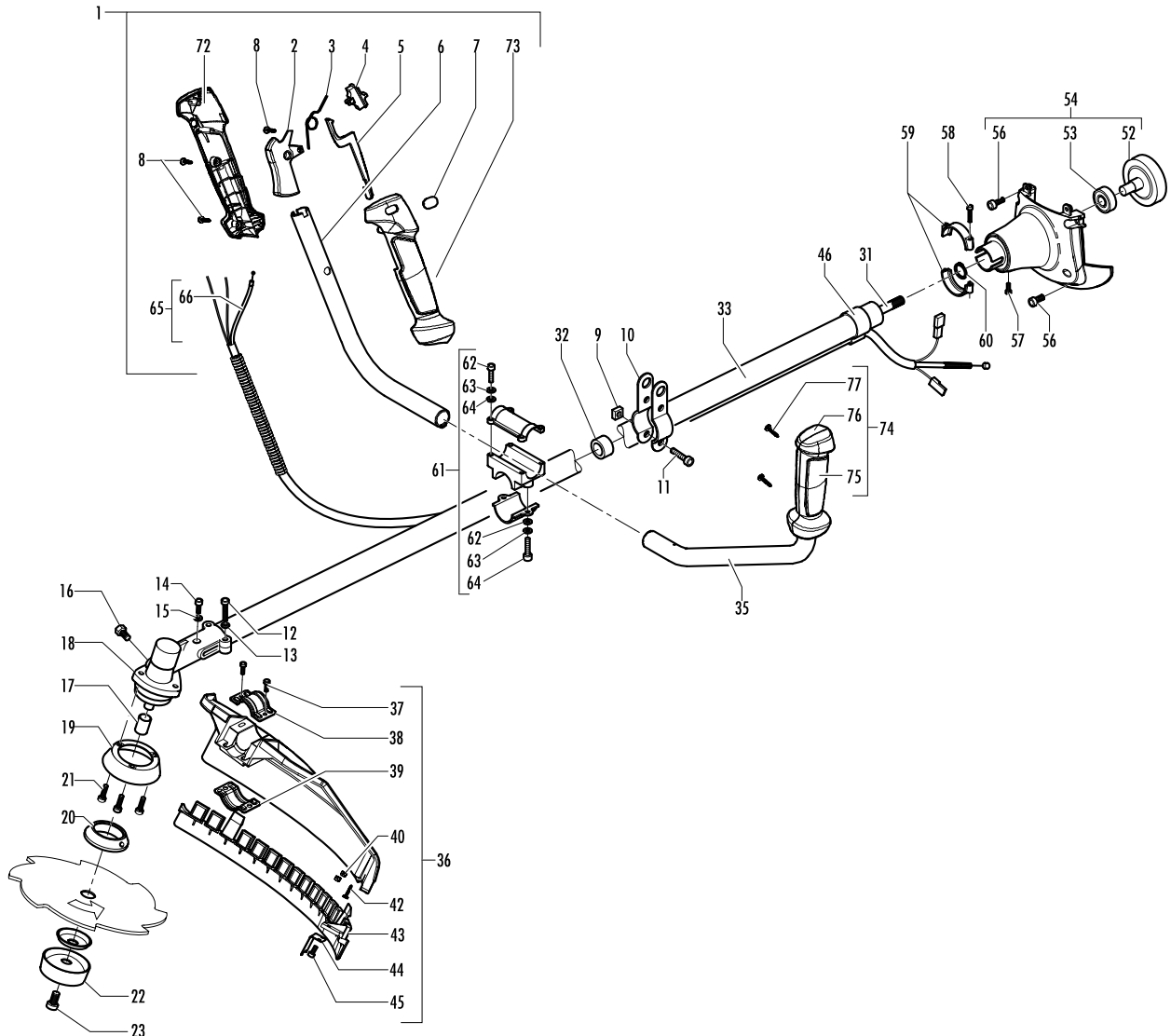
|       |                  |
|-------|------------------|
| brand | <b>MCCULLOCH</b> |
|-------|------------------|

|      |        |           |
|------|--------|-----------|
| date | APR/03 | SHEET 3/4 |
|------|--------|-----------|

|                   |        |
|-------------------|--------|
| Model             | Prefix |
| <b>ELITE 3325</b> | 01     |
|                   |        |
|                   |        |

|                  |
|------------------|
| Product number   |
| <b>953900386</b> |
|                  |
|                  |

**FIGURE 2**



|       |           |
|-------|-----------|
| brand | MCCULLOCH |
|-------|-----------|

|      |        |           |
|------|--------|-----------|
| date | APR/03 | SHEET 4/4 |
|------|--------|-----------|

|            |        |
|------------|--------|
| Model      | Prefix |
| ELITE 3325 | 01     |
|            |        |
|            |        |

|                |
|----------------|
| Product number |
| 953900386      |
|                |
|                |

FIGURE 2

| pos | P/N McC  | P/N ELX   | Qty | DESCRIPTION        |
|-----|----------|-----------|-----|--------------------|
| 1   | 242638   | 538242638 | 1   | right handle ass'y |
| 2   | • 242537 | 538242537 | 1   | gas lever trigger  |
| 3   | • 242540 | 538242540 | 1   | trigger spring     |
| 4   | • 242439 | 538242439 | 1   | switch             |
| 5   | • 242538 | 538242538 | 1   | trigger safety     |
| 6   | • 242605 | 538242605 | 2   | handle-bar r.      |
| 7   | • 242648 | 538242648 | 2   | rubber cap         |
| 8   | • 240862 | 538240862 | 3   | screw 4x18         |
| 9   | 236642   | 538236642 | 1   | nut                |
| 10  | 228152   | 538228152 | 1   | harness ring ass'y |
| 11  | 235911   | 538235911 | 1   | screw m6x12        |
| 12  | 235804   | 538235804 | 2   | screw m5x30        |
| 13  | 236529   | 538236529 | 2   | grower d.5         |
| 14  | 236381   | 538236381 | 1   | screw m5x10        |
| 15  | 236529   | 538236529 | 1   | grower d.5         |
| 16  | 240151   | 538240151 | 1   | screw M 8x10       |
| 17  | 247272   | 538247272 | 1   | spacer             |
| 18  | 241426   | 538241426 | 1   | gear box ass'y     |
| 19  | 240767   | 538240767 | 1   | flange guard       |
| 20  | 242410   | 538242410 | 1   | flange             |
| 21  | 240688   | 538240688 | 3   | screw/washer       |
| 22  | 236596   | 538236596 | 1   | hub                |
| 23  | 241155   | 538241155 | 1   | string head shield |
| 24  | 240850   | 538240850 | 1   | M10 Rod            |
| 26  | 241154   | 538241154 | 2   | eyelet             |
| 27  | 247395B  | 538047395 | 1   | D2.4 spool+line    |
| 29  | 240852   | 538240852 | 1   | spring             |
| 30  | 241153   | 538241153 | 1   | S. Head nut        |
| 31  | 228109   | 538228109 | 1   | drive shaft        |
| 32  | 228192   | 538228192 | 5   | bushing ass'y      |
| 33  | 227233   | 538227233 | 1   | shaft              |
| 35  | 242606   | 538242606 | 1   | handle-bar r.      |
| 36  | 248959   | 538248959 | 1   | safety guard       |
| 37  | • 227563 | 538227563 | 2   | M5X18 screw        |
| 38  | • 242629 | 538242629 | 1   | clamp upper        |
| 39  | • 242752 | 538242752 | 1   | clamp lower        |
| 40  | • 229208 | 538229208 | 2   | M5 nut             |
| 42  | • 240862 | 538240862 | 1   | screw 4x18         |
| 43  | • 242630 | 538242630 | 1   | string head guard  |
| 44  | • 241973 | 538241973 | 1   | cutter             |

| pos  | P/N McC  | P/N ELX   | Qty | DESCRIPTION        |
|------|----------|-----------|-----|--------------------|
| 45   | 235802   | 538235802 | 1   | M5X14 screw        |
| 46   | 229850   | 538229850 | 1   | retaini            |
| 48   | 242410   | 538242410 | 1   | flange             |
| 49   | 240807   | 538240807 | 1   | spacer             |
| 50   | 240809   | 538240809 | 1   | hub ass'y          |
| 51   | 240806   | 538240806 | 1   | rod                |
| 52   | 227284   | 538227284 | 1   | clutch drum        |
| 53   | 235918   | 538235918 | 1   | bearing            |
| 54   | 242625   | 538242625 | 1   | a/v mount ass'y    |
| 56   | 242784   | 538242784 | 4   | screw M6x25        |
| 57   | 235802   | 538235802 | 1   | screw M5x14        |
| 58   | 235804   | 538235804 | 2   | screw M5x30        |
| 59   | 248805   | 538248805 | 1   | clamps ass'y       |
| 60   | 236378   | 538236378 | 1   | seeger ring        |
| 61   | 241685   | 538241685 | 1   |                    |
| 62   | • 235803 | 538235803 | 4   | screw M5x25        |
| 63   | • 236529 | 538236529 | 4   | washer             |
| 64   | • 235248 | 538235248 | 4   | washer             |
| C 65 | 242607   | 538242607 | 1   | wires ass'y        |
| C 66 | • 241424 | 538241424 | 1   | throttle cable     |
| 67   | 240853B  | 538040853 | 1   | string head ass'y  |
| 68   | 240767   | 538240767 | 1   | flange             |
| 69   | 229834   | 538229834 | 1   | flange             |
| 70   | 236596   | 538236596 | 1   | hub                |
| 71   | 229842   | 538229842 | 1   | nut                |
| 72   | • 242533 | 538242533 | 1   | right handle (1/2) |
| 73   | • 242534 | 538242534 | 1   | left handle (1/2)  |
| 74   | 242606   | 538242606 | 1   | left handle ass'y  |
| 75   | • 242536 | 538242536 | 1   | right handle (1/2) |
| 76   | • 242535 | 538242535 | 1   | left handle (1/2)  |
| 77   | • 240862 | 538240862 | 1   | screw 4x18         |
| 78   | 235921   | 538235921 | 2   | screw M6x30        |
| 79   | 236528   | 538236528 | 2   | washer             |
| 80   | 236936   | 538236936 | 2   | washer             |

A= ALTA ROTAZIONE  
B=MEDIA ROTAZIONE  
C=BASSA ROTAZIONE

A=HIGH MOVING  
B=MEDIUM MOVING  
C=SLOW MOVING

A=HAUTE DEMANDE  
B=MOYENNE DEMANDE  
C=BASSE DEMANDE

A=GROßE NACHFRAGE  
B=MITTELMAEßIGE  
C=WENIGE NACHFRAGE