

C 1	240861	1	C 84	241357	1
B 2	• 240485	1	85	235642	1
B 3	• 240484	1	86	227259	1
4	• 227470	1	87	241147	M5x16 1
C 5	• 227468	1	88	236936	1
A 6	• 227471	1	89	236933	M6x18 1
C 7	• 227300	1	90	240845	M5x16 1
8	• 227467	1	91	241474	1
9	• 240884	1	92	227259	1
10	235530	M5x35 2	93	241308	1
11	235803	M5x25 2	B 94	• 227406	1
12	227626	4	A 95	• 227407	1
13	227762	1	96	• 227408	1
14	241312	1	97	• 227409	1
B 15	227508	1	C 98	• 227411	1
C 16	• 227420	1	99	• 227676	1
B 17	227507	1	100	• 227626	1
C 18	• 227459	1	101	• 235642	2
19	235806	M5x20 7	102	• 235530	M5x35 2
20	227626	7	C103	• 241468	1
21	241352	1	C104	• 241467	1
22	235806	M5x20 2	105	• 241469	1
23	227629	2	106	• 240863	1
24	235642	2	107	241572	1
25	227629	2	108	227626	2
26	227563	M5x16 1	109	235802	M5x14 2
27	235248	1	110	240863	1
28	229524	1	C111	241464	1
C 29	241356	1	C112	241465	1
30	227563	M5x16 1	113	241466	1
31	227259	1	114	241479	1
32	242022	1	115	235642	1
33	• 227458	M5x21 3	116	227626	1
C 34	241501	1	C117	240036	1
35	• 241470	1	118	235803	M5x25 1
36	235806	M5x20 2	119	241487	1
37	227626	2	120	241505	2
C 38	FIGURE 2	1	121	241484	1
A 39	240010	1	122	241485	1
40	227565	M5x25 4	123	229510	3
C 41	227483	1	C124	241319	1
C 42	240654	1	125	240314	M6x16 1
43	227491	1	126	227504	1
44	227567	M5x70 2	127	235225	1
45	236381	M5x10 1	C128	241350	1
46	227626	1	129	229514	1
47	227566	M5x65 2	A130	227762	2
48	227629	2	131	241317	1
49	227316	1	132	248166	1
50	235802	M5x14 1	133	• 229450	1
51	227458	M5x21 2	134	• 227497	2
B 52	227561	1	135	• 236728	1
C 53	FIGURE 3	1	C136	• 227499	1
54	227424	1	137	248167	1
A 55	227417	1	138	• 229450	1
56	227629	2	C139	• 241307	1
57	235803	M5x25 2	C140	• 227370	2
C 58	240114	1	141	241339	1
C 59	227395	1	C142	241344	1
C 60	227371	1	143	241345	1
61	227616	M5x16 2	144	241346	1
62	235642	2	C145	241347	1
63	227626	2	146	• 227359	3
C 64	227368	1	B147	• 227360	3
C 65	227369	1	148	• 241348	1
C 66	227391	1	C149	227546	1
C 67	227631	1	C150	227329	1
68	241300	1	B151	227547	1
C 69	227335	1	152	229519	1
A 70	227516	1	153	241349	1
B 71	227366	1	154	241343	1
B 72	227365	1	155	228908	M4x14 2
C 73	241354	1	C156	241320	1
74	• 227443	1	C157	• 241332	1
75	• 227445	1	C158	227383	1
76	• 227801	M4x75 1	C159	241342	1
77	• 227904	1	160	228908	M4x14 3
78	• 240683	1	C161	241340	1
79	• 229524	1	C162	227464	1
C 80	• 240119	1	C163	• 227527	1
81	• 240862	3	C164	241341	1
82	• 241471	1	165	240309	1
C 83	• 241473	1	166	240363	1
			167	227943	1

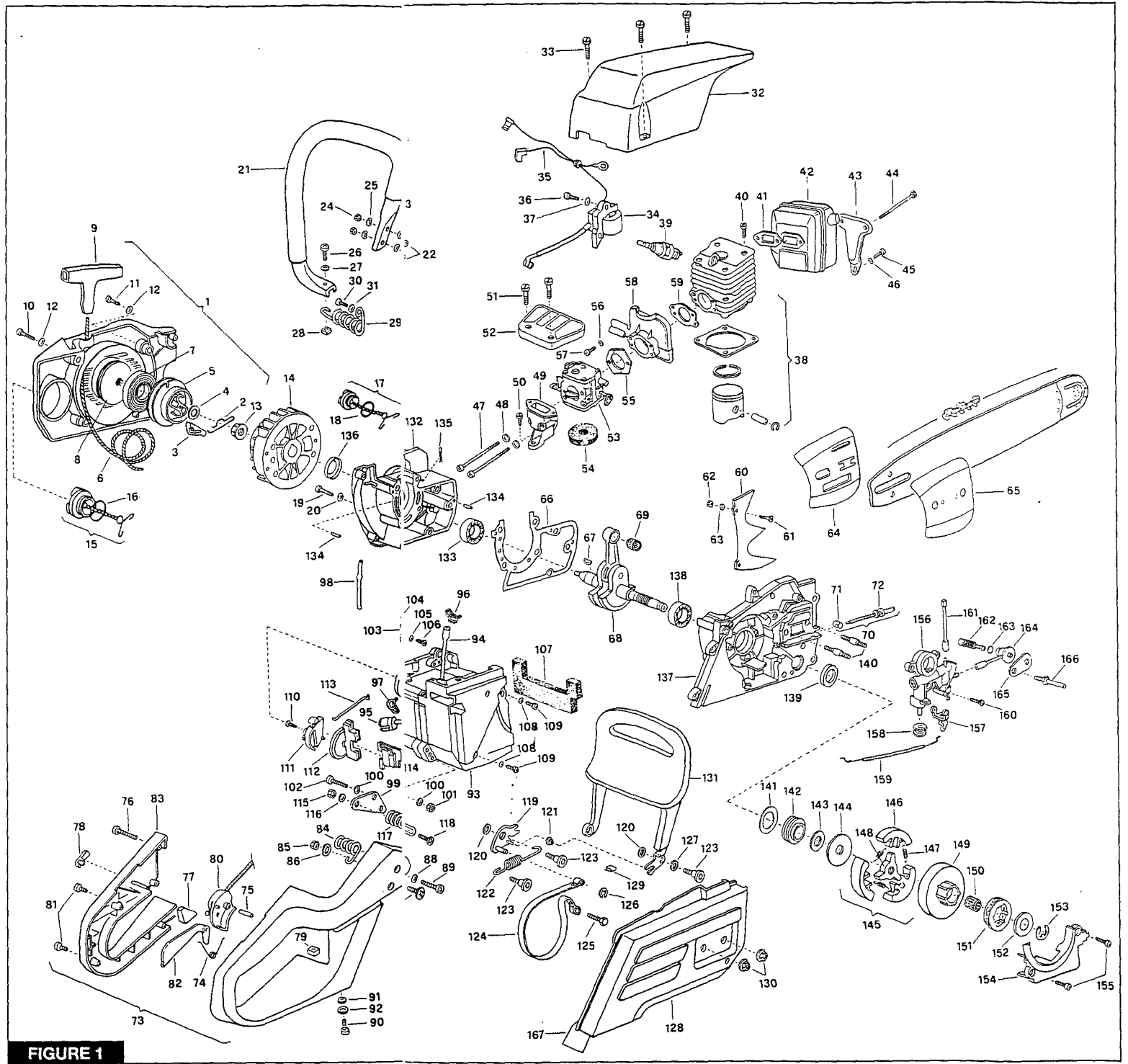


FIGURE 1

	54 cc	C 1 227514 1 B 2 ● 227393 1 C 3 ● 227510 1 4 ●● 229544 2 B 5 ●● 227543 1 6 ●● 227344 1
	59 cc	C 1 227515 1 B 2 ● 227393 1 C 3 ● 227511 1 4 ●● 229544 2 B 5 ●● 227544 1 6 ●● 227344 1

FIGURE 2

VALBRO WJ 82		
C -	241311	carbur.
B 1	● 237212	1
A 2	●● 237211	1
	3 ● 229927	2
	5 ● 237202 L	1
	6 ● 229930 H	1
C 7	● 237203	1
	9 ● 240219	1
	10 ● 240218	1

FIGURE 3

A = high moving - alta rotazione - haute demande - große Nachfrage
B = medium moving - media rotazione - moyenne demande - mittelmäßige Nachfrage
C = slow moving - bassa rotazione - basse demande - wenige Nachfrage