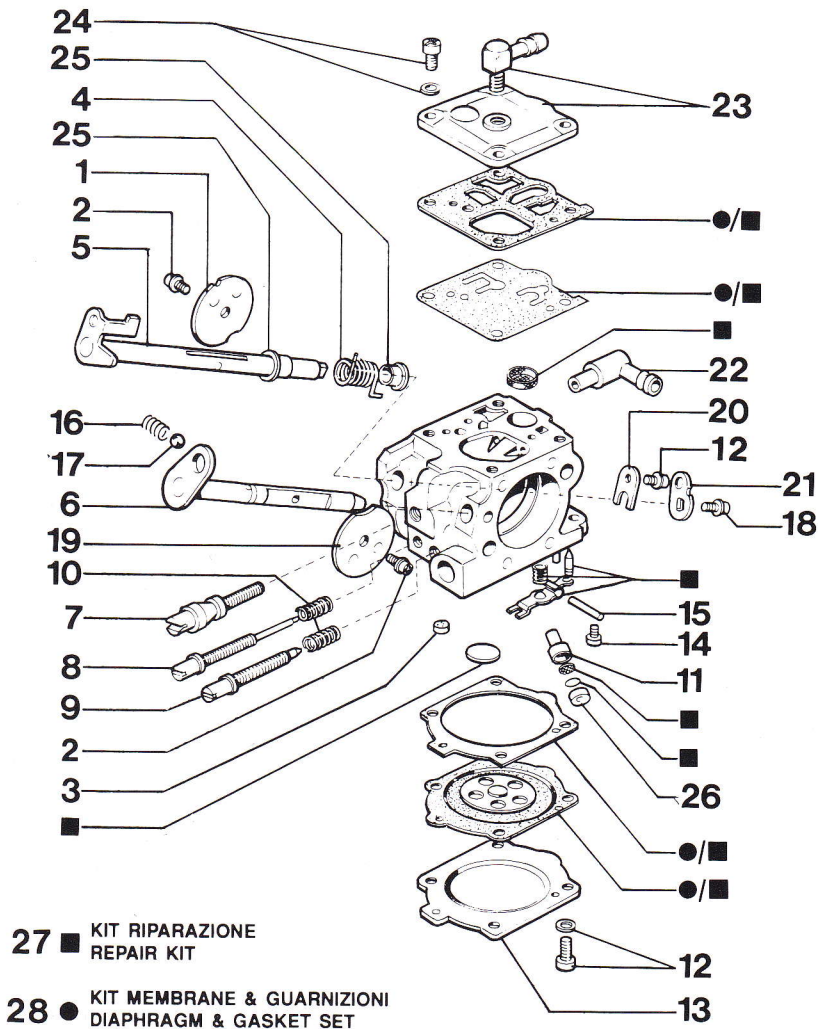


per }
for } mod. 970

29





**CARBURATORE / CARBURETOR
CARBURATEUR / CARBURADOR**

9 A6

DATA/DATE
10 / 1999

SERVICE

mod. **WALBRO WJ - 44B**

REF.	PART. NO.	SOSTITUITO DA REEMPLACÉ PAR REPLACED BY	DESCRIZIONE	DESCRIPTION	DESCRIPTION	DESCRIPCION	Bollettino - Bulletin		
			ITALIANO	ENGLISH	FRANÇAIS	ESPAÑOL	Gr.	N°	Data-Date
1	0970.00222	0284.00110	FARFALLA ACCEL.	VALVE THROTTLE	PAPILLON ACCEL.	VALVULA ACEL.			
2	0350.00160		VITE	SCREW	VIS	TORNILLO			
3	0999.00595		TAPPO	CAP	CAPUCHON	TAPON			
4	0970.00161		MOLLA	SPRING	RESSORT	RESORTE			
5	0970.00154		ALBERO ACCEL.	THROTTLE SHAFT	AXE ACCEL.	EJE ACEL.			
6	0970.00155		ALBERO STARTER	CHOKE SHAFT	AXE STARTER	EJE STARTER			
7	0970.00162		VITE REGISTRO	SCREW ADJUST.	VIS E STARTER	EJE STARTER			
8	0970.00164		VITE "L"	SCREW "L"	VIS "L"	TORNILLO "L"			
9	0970.00163		VITE "H"	SCREW "H"	VIS "H"	TORNILLO "H"			
10	0970.00223		MOLLA	SPRING	RESSORT	RESORTE			
11	0970.00158		GETTO	VALVE	SOUPAPE	VALVULA			
12	0350.00162		VITE	SCREW	VIS	TORNILLO			
13	0970.00156		COPERCHIO	COVER	COUVERCLE	TAPA			
14	0033.00202		VITE	SCREW	VIS	TORNILLO			
15	0350.00169		PERNO	PIN	AXE	PERNO			
16	0350.00164		MOLLA	SPRING	RESSORT	RESORTE			
17	0060.00325		SFERA	BALL	BILLE	BOLA			
18	0033.00209		VITE	SCREW	VIS	TORNILLO			
19	0350.00151		FARFALLA STARTER ..	CHOKE VALVE	PAPILLON STARTER ..	VALVULA STARTER			
20	0350.00149		PIASTRINA	PLATE	ENTRETOISE	PLACA			
21	0970.00160		LEVA	LEVER	LEVIER	PALANCA			
22	0033.00036		RACCORDO	ELBOW CONNECTION ..	PIECE COUDEE	EMPALME			
23	0970.00157		COPERCHIO	COVER	COUVERCLE	TAPA			
24	0350.00161		VITE	SCREW	VIS	TORNILLO			
25	0970.00224		BOCCOLA	BUSHING	BAGUE	BOQUILA			
26	0970.00159		GETTO	VALVE	SOUPAPE	VALVULA			
27	0970.00220		KIT RIPARAZ.	REPAIR KIT	KIT RIPARATION	JUEGO DE REPARACION			
28	0970.00221		KIT MEMBRANE E GUARNIZ.	DIAPH. AND GASKET KIT	DE JOINTS	JUEGO DE JUNTAS			
29	0970.00012A		CARBURATORE COMPL. .	COMPL. CARBURETOR ...	CARBURATEUR COMPL. .	CARBURADOR COMPL.			