

HUSQVARNA OUTDOOR PRODUCTS

PNC	Type/Prefix/ML	Model	Brand
966847501	02	P 4616 15" .325	

Number of Pages 1 of 7

Factory: IIQ - Valmadrera	Product Group: OP 93	
Publication Number: EIPL2007_V380000002	Petrol Portable	
Publication Date: 19/09/07	Sub Group 9430	

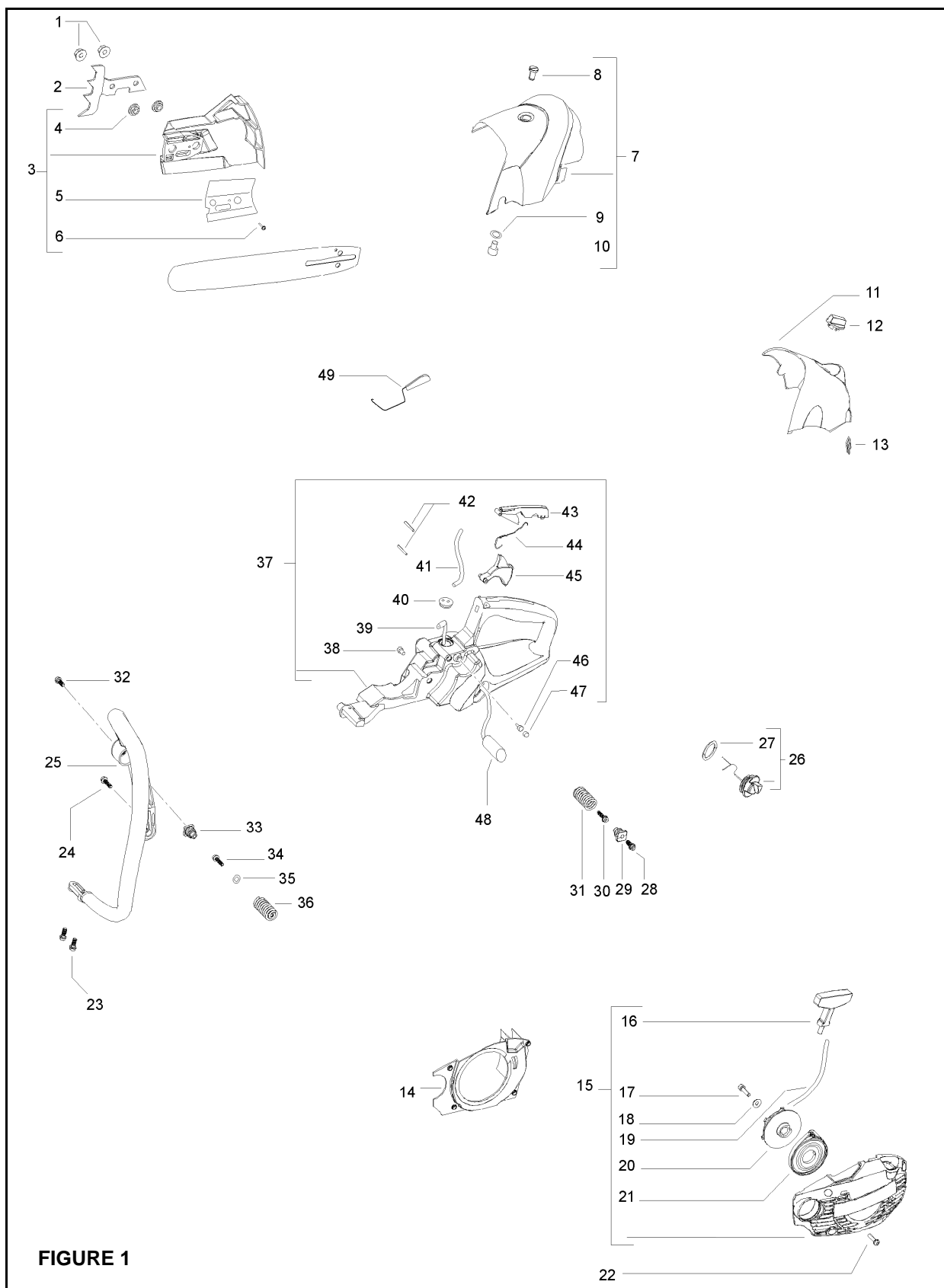


FIGURE 1

Item	P/N McC	P/N ELX	Qty	DESCRIPTION
------	---------	---------	-----	-------------

Item	P/N McC	P/N ELX	Qty	DESCRIPTION
------	---------	---------	-----	-------------

FIGURE 1

A	1	227762	538227762	2	nut M8
C	2	243221	538243221	1	spiked bumper
C	3	243111	538243111	1	clutch cover assy
	4	• 241912	538241912	2	bushings
	5	• 240360	538240360	1	bar plate
	6	• 229082	538229082	1	screw
	7	243120	538243120	1	engine cover assy
	8	• 503227001	503227001	1	screw
	9	• 236936	538236936	1	washer
	10	• 240272	538240272	1	grommet
	11	243129	538243129	1	air filter cover
C	12	249705	538249705	1	knob
	13	242960	538242960	1	grommet
C	14	243105	538243105	1	air conveyor
B	15	249706	538249706	1	starter assy
	16	• 503543901	503543901	1	handle
	17	• 229791	538229791	1	screw
	18	• 227259	538227259	1	washer
A	19	• 505305125	505305125	1	rope
B	20	• 506016401	506016401	1	pulley
B	21	• 501763101	501763101	1	spring
	22	235806	538235806	4	screw with washer
	23	503218816	503218816	2	screw
	24	503217520	503217520	2	screw
	25	243101	538243101	1	front handle
	26	243137	538243137	2	fuel/oil cap assy
	27	• 235510	538235510	2	o-ring
	28	503218816	503218816	2	screw
C	29	243133	538243133	2	antivibe
	30	503217520	503217520	2	screw
C	31	243212	538243212	2	spring lower
	32	503218816	503218816	1	screw
C	33	243133	538243133	1	antivibe
	34	227563	538227563	1	screw
	35	235248	538235248	1	washer
	36	243339	538243339	1	upper spring
C	37	249707	538249707	1	rear handle assy
	38	• 243340	538243340	2	grommet
	39	• 242965	538242965	1	fuel hose
	40	• 235675	538235675	1	grommet
B	41	• 242489	538242489	1	hose
	42	• 243234	538243234	2	pin
C	43	• 243100	538243100	1	safety lever
	44	• 243103	538243103	1	trigger spring
C	45	• 243099	538243099	1	throttle trigger
	46	• 235658	538235658	1	valve
	47	• 235735	538235735	1	synterized
A	48	503443201	503443201	1	fuel filter
	49	243532	538243532	1	throttle lever

A=ALTA ROTAZIONE
 B=MEDIA ROTAZIONE
 C=ALTA ROTAZIONE
 NUOVI CODICI

A=HIGH MOVING
 B=MEDIUM MOVING
 C=SLOW MOVING
 NEW P. NUMBERS

A=HAUTE DEMANDE
 B=MOYENNE DEMANDE
 C=BASSE DEMANDE
 NOUVELLES REFERENCES

A=GROBE NACHFRAGE
 B=MITTELMAESSIGE
 C=WENIGE NACHFRAGE
 NEU CODEX

Item	P/N McC	P/N ELX	Qty	DESCRIPTION
FIGURE 2				
1	243271	538243271	1	flywheel assy
2	• 235516	538235516	2	pin
3	• 243383	538243383	2	pawl
4	• 503783201	503783201	2	spring
5	503221011	503221011	1	nut
6	503230101	503230101	1	washer
7	503202520	503202520	2	screw
C 8	242925	242925	1	ignition coil
C 9	243321	538243321	1	cable ignition coil - switch
C 10	243440	538243440	1	switch
11	235806	538235806	1	screw
12	243414	538243414	2	screw
B 13	505310751	505310751	1	hose
B 14	506013202	506013202	1	intake hose
C 15	243142	538243142	1	carb spacer
16	501527801	501527801	3	fairlead
17	235806	538235806	1	screw
A 18	501770002	501770002	1	carb. Gasket
B 19	FIGURE 3			
20	242960	538242960	1	fairlead
21	242489	538242489	1	primer-carb hose
B 22	224242-01	538022424	1	primer
23	243143	538243143	1	air filter housing
24	241705	538241705	2	bushing
25	243425	538243425	1	filter cover plate
26	229208	538229208	2	nut
A 27	243144	538243144	1	air filter
28	503218816	503218816	2	screw
29	243145	538243145	1	choke knob
30	243675	538243675	1	choke knob holder
31	235806	538235806	1	screw m5x20
32	229740	538229740	1	brake spring
33	235642	538235642	2	nut M5
34	241902	538241902	1	brake housing
35	241903	538241903	1	brake needle
36	242017	538242017	1	band pivot
B 37	235073	538235073	1	brake band
38	243092	538243092	1	brake lever
39	235806	538235806	2	screw M5x20
40	241906	538241906	1	washer
41	241904	538241904	1	sleeve
42	241905	538241905	1	screw M6x25
43	243338	538243338	1	washer
B 44	242004	538242004	1	clutch assy
C 45	• 242005	538242005	1	clutch rotor
B 46	• 240926	538240926	3	clutch spring
C 47	• 227359	538227359	3	clutch shoe
B 48	243223	538243223	1	clutch drum (7T)

Item	P/N McC	P/N ELX	Qty	DESCRIPTION
49	235287	538235287	1	washer
50	229137	538229137	1	seeger
51	240359	538240359	1	bar plate
B 52	537071201	537071201	1	chain tensioner
53	503218201	503218201	2	screw
54	503723701	503723701	1	exhaust gasket
55	506011703	506011703	1	muffler
56	503853301	503853301	1	muffler shield
57	503222302	503222302	2	nut

FIGURE 3 WALBRO WT738				
B -	243187	538243187	1	carburetor
1	• 229191	538229191	1	gasket kit
2	• 247260	538247260	1	repair kit

FIGURE 3 ZAMA C1Q-M44				
B -	-	-	-	carburetor
1	503482101	503482101	1	gasket kit GND-33
2	249171	538249171	1	repair kit RB 45 Z

A=ALTA ROTAZIONE	A=HIGH MOVING	A=HAUTE DEMANDE	A=GROBE NACHFRAGE
B=MEDIA ROTAZIONE	B=MEDIUM MOVING	B=MOYENNE DEMANDE	B=MITTELMAESSIGE
C=ALTA ROTAZIONE	C=SLOW MOVING	C=BASSE DEMANDE	C=WENIGE NACHFRAGE
NUOVI CODICI	NEW P. NUMBERS	NOUVELLES REFERENCES	NEU CODEX

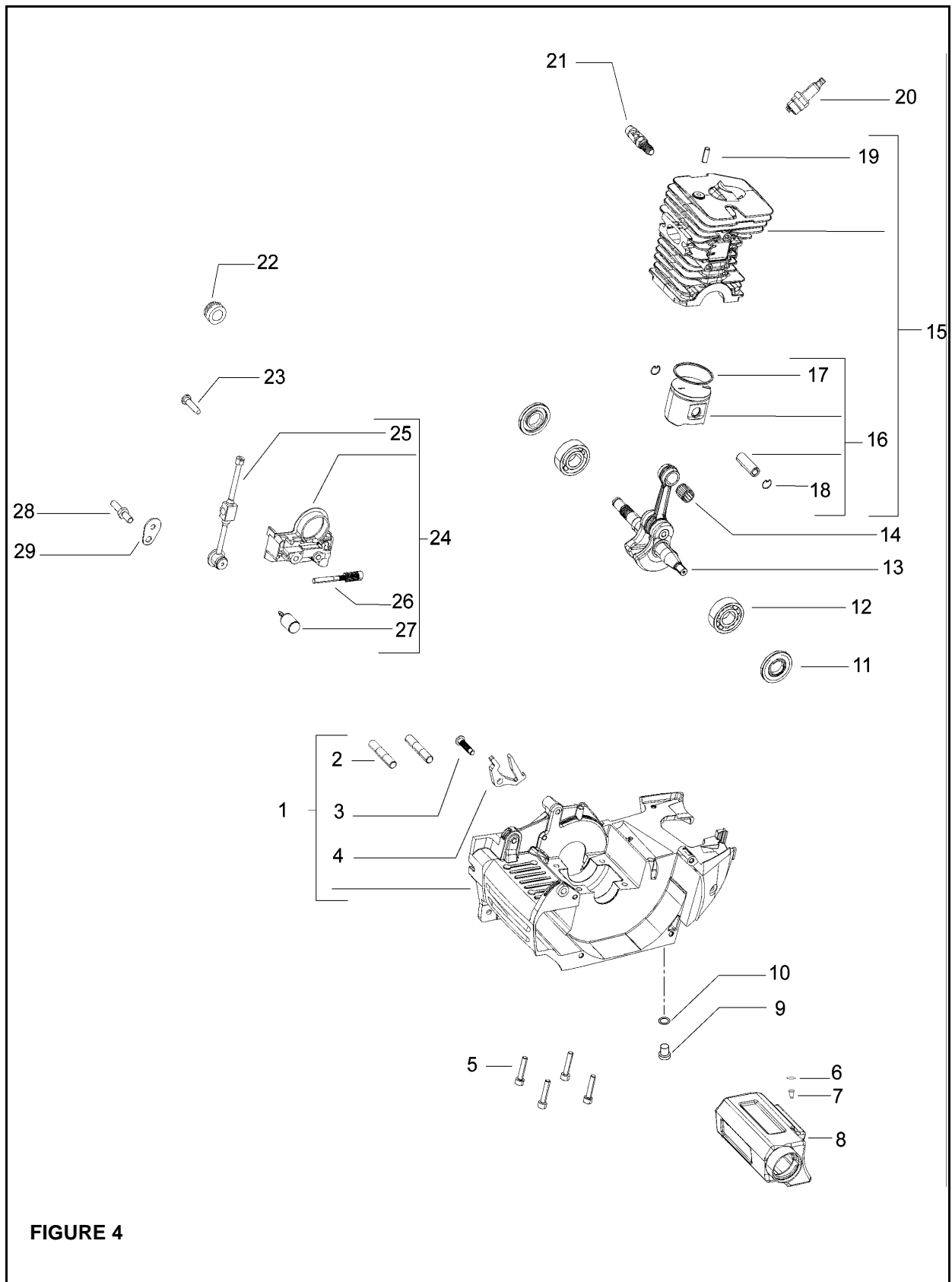


FIGURE 4

Item P/N McC P/N ELX Qty DESCRIPTION

Item P/N McC P/N ELX Qty DESCRIPTION

FIGURE 4

	1	249708	538249708	1	crankcase kit
	2	• 241881	538241881	2	bar bolt
	3	• 235075	538235075	1	latch pivot
	4	• 242367	538242367	1	brake latch
	5	227565	538227565	4	screw
C	6	241717	538241717	1	felt
C	7	235658	538235658	1	valve
	8	243097	538243097	1	oil tank
	9	243340	538243340	1	grommet
	10	236936	538236936	1	washer
B	11	243174	538243174	2	seal
C	12	227541	538227541	2	ball bearing
	13	243172	538243172	1	crankshaft assy
	14	501451601	501451601	1	needle bearing
C	15	249698	538249698	1	cylinder kit 46 cc
B	16	• 249710	538249710	1	piston kit 46 cc
B	17	•• 240353	538240353	1	piston ring 46cc
B	18	•• 737441000	737441000	2	snap ring
	19	• 240319	538240319	1	bolt
A	20	240010	5382401010	1	spark plug RCJ7Y
	21	94273	538094273	1	decompression valve
C	22	243415	538243415	1	endless screw
	23	503202520	503202520	2	screw
A	24	243098	538243098	1	oil pump assy
B	25	• 243095	538243095	1	oil pump hose
C	26	• 249719	538249719	1	oil pump piston kit
C	27	• 225062	538225062	1	oil filter
	28	240363	538240363	1	oil cap plate
C	29	240309	538240309	1	chain catcher

A=ALTA ROTAZIONE
 B=MEDIA ROTAZIONE
 C=ALTA ROTAZIONE
 NUOVI CODICI

A=HIGH MOVING
 B=MEDIUM MOVING
 C=SLOW MOVING
 NEW P. NUMBERS

A=HAUTE DEMANDE
 B=MOYENNE DEMANDE
 C=BASSE DEMANDE
 NOUVELLES REFERENCES

A=GROBE NACHFRAGE
 B=MITTELMAESSIGE
 C=WENIGE NACHFRAGE
 NEU CODEX