

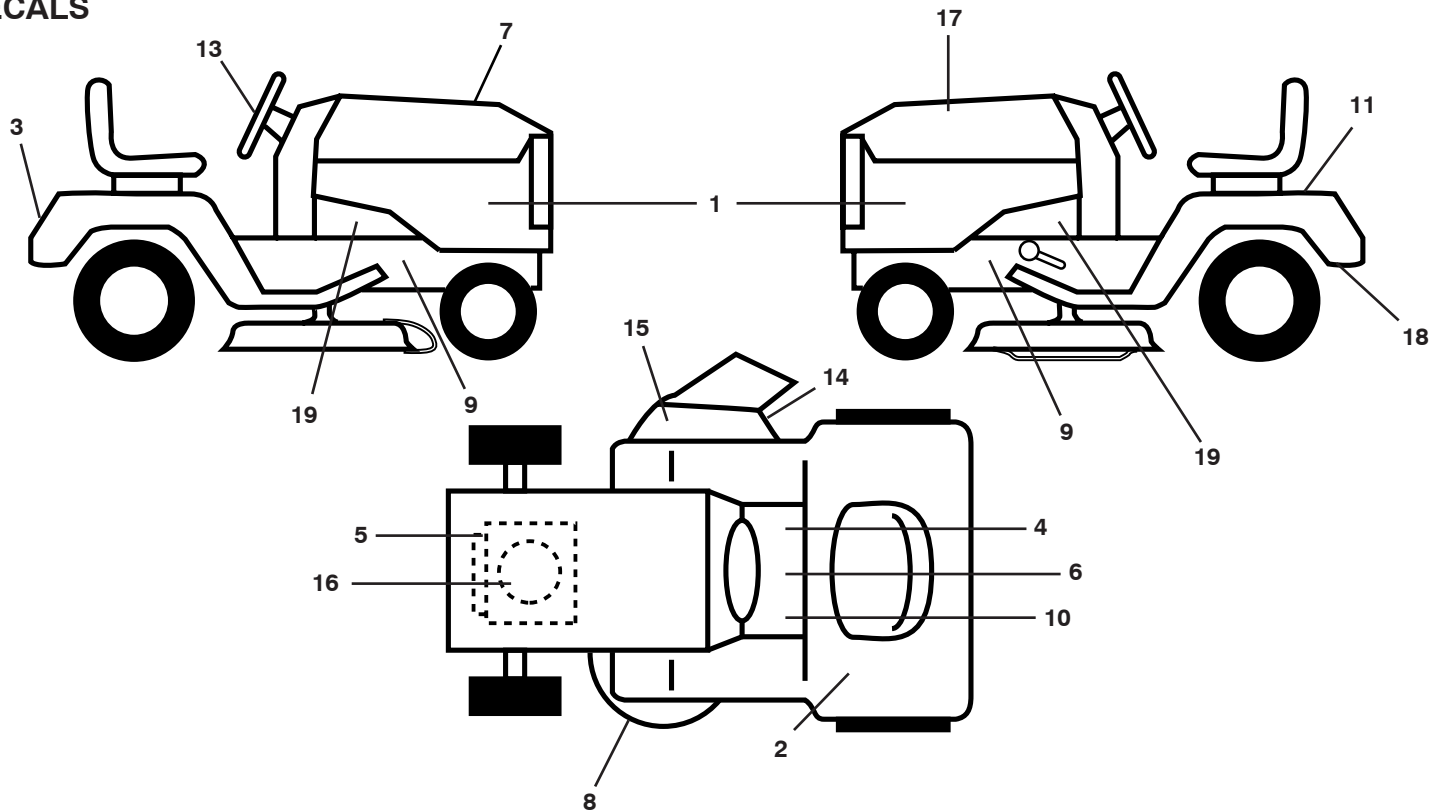
# **ILLUSTRATED PARTS LIST**

**MFG. ID NO. 96041001600**

**CUSTOMER CATALOG NO. P180107H**

**PRODUCT NO. 960 41 00-16**

**TRACTOR - MODEL NUMBER P180107H 96041001600 PRODUCT NO. 960 41 00 16  
DECALS**



**KEY PART  
NO. NO.**

**DESCRIPTION**

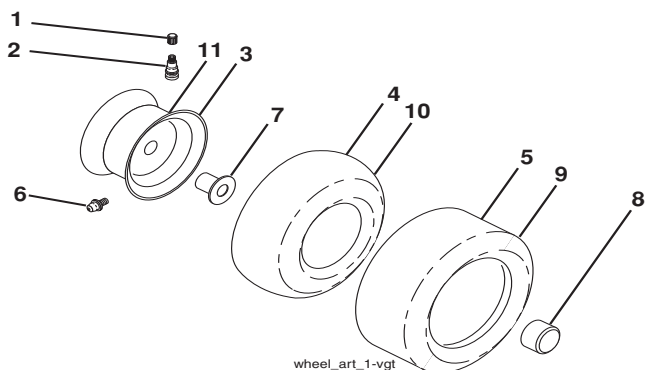
1	532 40 86-39	Decal, Panel SD
2	532 18 04-32	Decal, Fender 100 DB/CE
3	532 40 86-42	Decal, Fender
4	532 15 97-37	Decal, Brake/Clutch
5	532 40 88-20	Decal, Engine HP
6	532 40 03-89	Decal, Warning
7	532 40 81-81	Decal, Hood RH
8	532 16 03-96	Decal, V-Belt Schematic
9	532 15 97-36	Decal, Chassis Hot Muffler
10	532 14 08-37	Decal, Saddle Brake Parking
11	532 14 50-05	Decal, Battery Dnge/Poi
13	532 40 80-55	Decal, Whl Str

**KEY PART  
NO. NO.**

**DESCRIPTION**

14	532 18 21-66	Decal, Cutfinger
15	532 19 63-57	Decal, Deflect Wrn
16	532 19 68-41	Decal, Warning Engine
17	532 40 81-83	Decal, Hood LH
18	532 16 25-98	Decal, Drawbar
19	532 18 56-51	Decal, Chas Turbo
--	532 16 69-60	Decal, Bypass Fender
--	532 40 80-54	Decal, Grille
--	532 40 95-05	Pad, Footrest, LH
--	532 41 12-73	Pad, Footrest, RH
--	532 40 91-27	Manual, Operator's (Euro)
--	532 40 91-28	Manual, Operator's (Scand)

**WHEELS & TIRES**



**KEY PART  
NO. NO.**

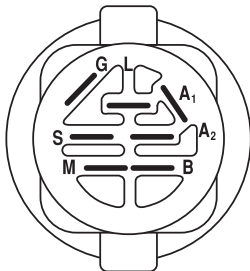
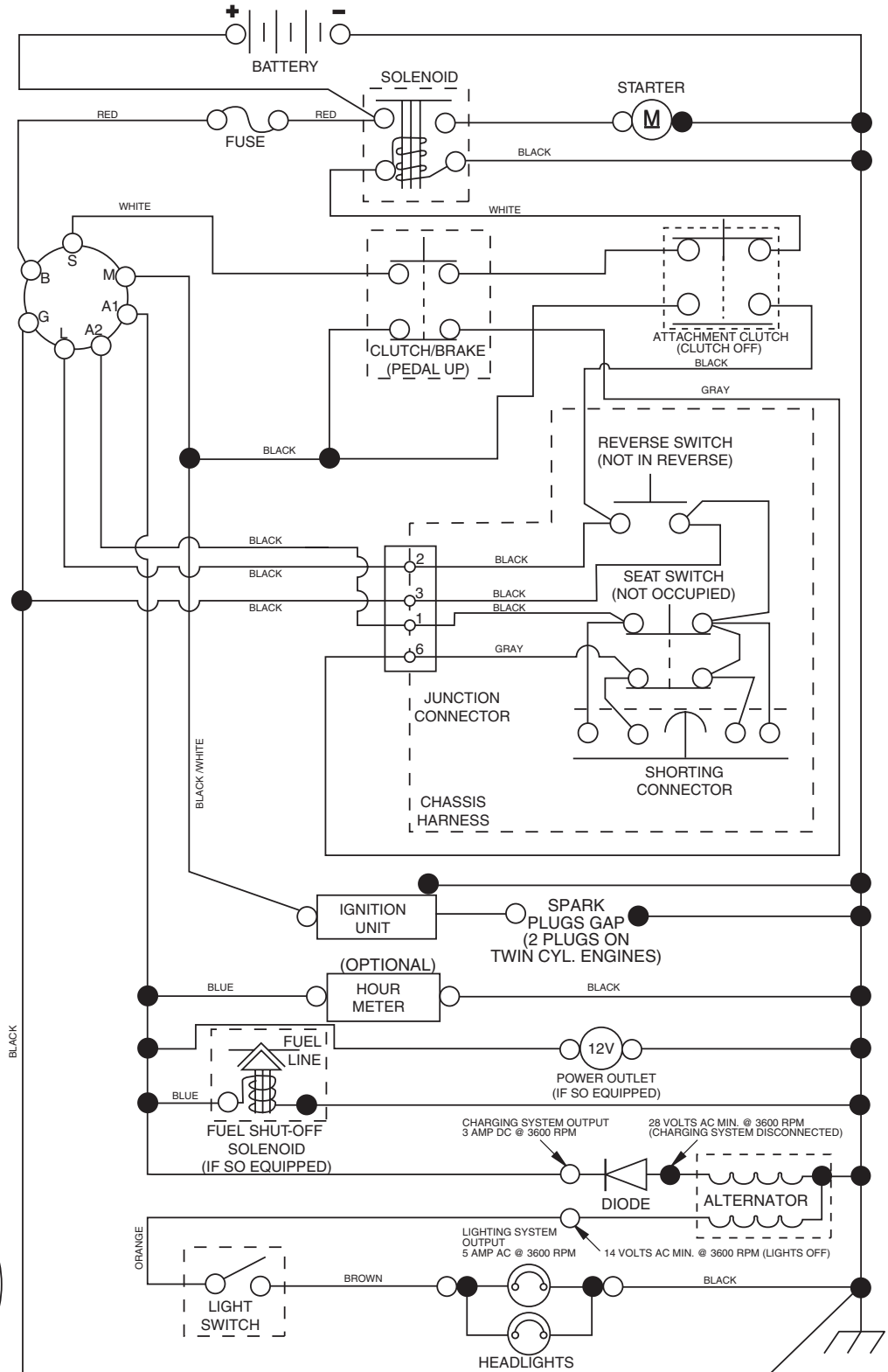
**DESCRIPTION**

1	532 05 91-92	Cap, Valve, Tire
2	532 06 51-39	Stem, Valve
3	532 12 51-21	Rim Assembly, Front
4	532 05 99-04	Tube, Front
5	532 10 62-22	Tire, Front
6	532 12 49-57	Fitting, Grease
7	532 12 49-59	Bearing, Flange
8	532 17 50-39	Cap, Axle (Front Wheel Only)
9	532 12 20-82	Tire, Rear
10	532 12 49-26	Tube, Rear
11	532 12 51-22	Rim Assembly, Rear
--	532 14 43-34	Sealant, Tire (10 oz. Tube)

**NOTE:** All component dimensions given in U.S. inches 1 inch = 25.4 mm

# TRACTOR - MODEL NUMBER P180107H 96041001600 PRODUCT NO. 960 41 00 16 SCHEMATIC

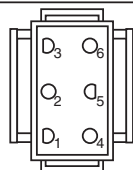
03094-194276\_Manual-Tex



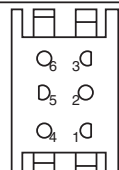
**IGNITION SWITCH**

POSITION	CIRCUIT	"MAKE"
OFF	M+G+A1	
RUN/OVERRIDE	B+A1	
RUN	B+A1	L+A2
START	B + S + A1	

03094



**CHASSIS HARNESS CONNECTOR (MATING SIDE)**



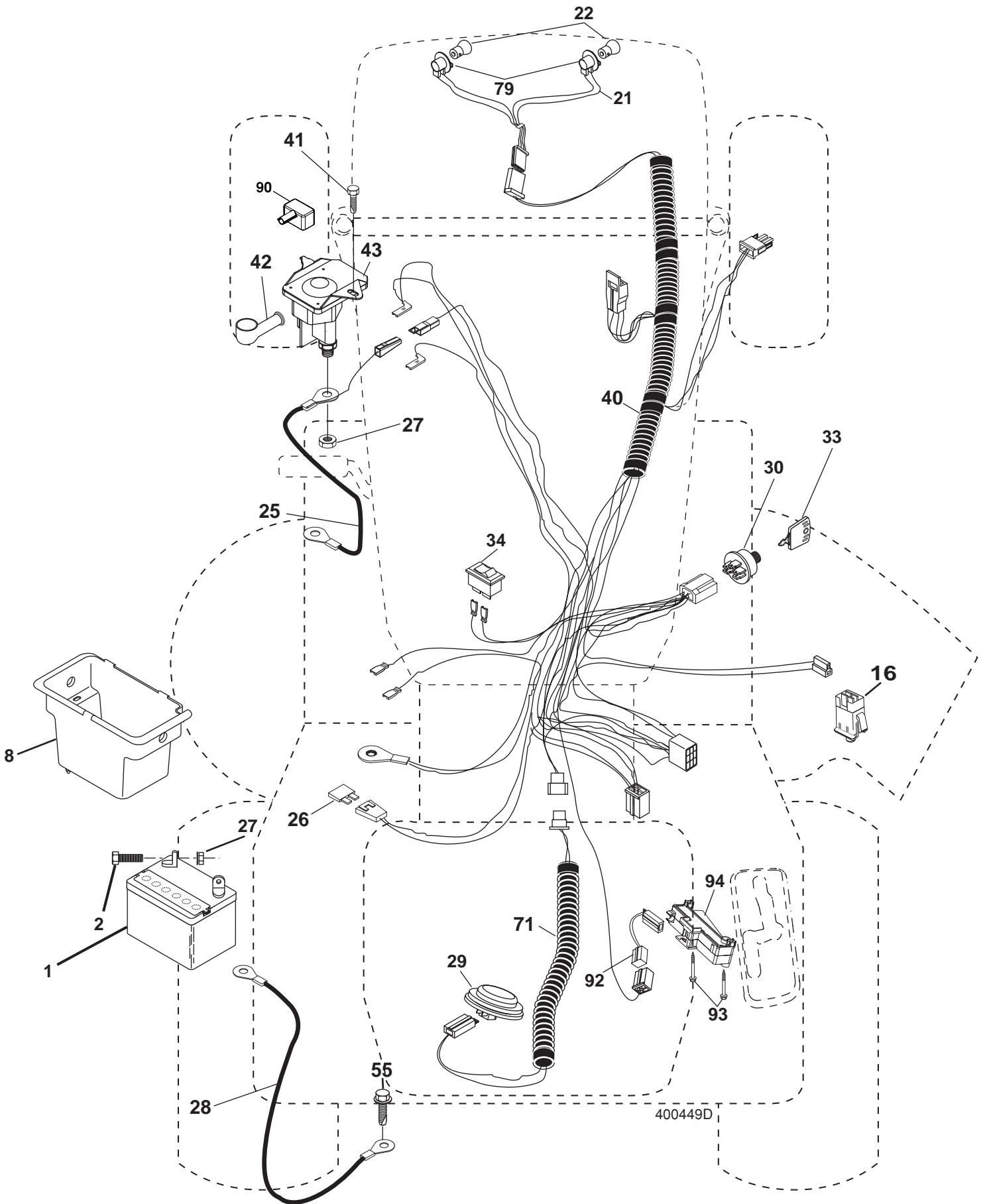
**DASH HARNESS CONNECTOR (MATING SIDE)**

**WIRING INSULATED CLIPS**  
**NOTE:** IF WIRING INSULATED CLIPS WERE REMOVED FOR SERVICING OF UNIT, THEY SHOULD BE REPLACED TO PROPERLY SECURE YOUR WIRING.

●  
NON-REMOVABLE CONNECTIONS

○  
REMOVABLE CONNECTIONS

TRACTOR - MODEL NUMBER P180107H 96041001600 PRODUCT NO. 960 41 00 16  
ELECTRICAL

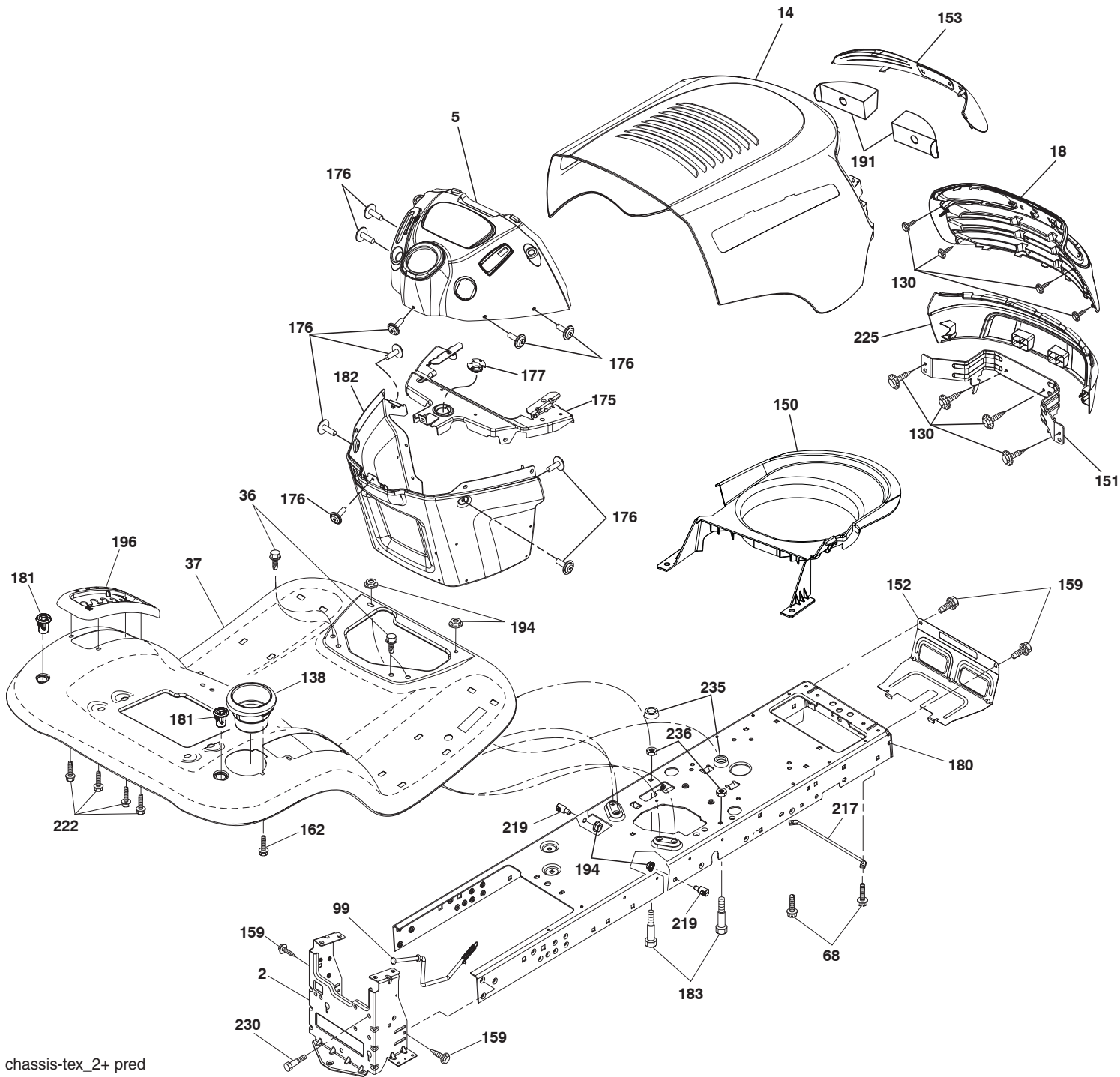


**TRACTOR - MODEL NUMBER P180107H 96041001600 PRODUCT NO. 960 41 00 16  
ELECTRICAL**

<b>KEY NO.</b>	<b>PART NO.</b>	<b>DESCRIPTION</b>
1	532 16 34- 65	Battery
2	874 76 04-12	Bolt Hex Hd 1/4-20 unc x 3/4
8	532 19 32-28	Box Battery
16	532 17 61-38	Switch Interlock Push-In
21	532 40 02-52	Harness Socket Light W/4152J
22	532 00 41-52	Bulb Light
25	532 40 16-62	Cable Starter
26	532 17 51-58	Fuse
27	873 51 04-00	Nut Keps Hex 1/4-20 unc
28	532 19 88-85	Cable, Ground
29	532 19 27-49	Switch, Seat
30	532 19 33-50	Switch, Ign
33	532 14 04-01	Key, Ignition
34	532 11 07-12	Switch Light / Reset
40	532 40 04-49	Harness Ign.
41	817 72 04-08	Screw Thd Cut 1/4-20 x 1/2
42	532 13 15-63	Cover, Terminal
43	532 19 25-07	Solenoid
55	817 06 05-12	Screw Thdrol 5/16-18 x 3/4 TYTT
71	532 40 10-98	Harness Ign. Dash
79	532 17 52-42	Bulbholder Asm. Incandescent
90	532 40 07-25	Cover Terminal Battery
92	532 19 66-15	Harness Pigtail
93	532 19 25-40	Screw Plastite 10-14 x 2.0
94	532 19 18-34	Module Reverse ROS

**NOTE:** All component dimensions given in U.S. inches  
1 inch = 25.4 mm

**TRACTOR - MODEL NUMBER P180107H 96041001600 PRODUCT NO. 960 41 00 16  
CHASSIS**



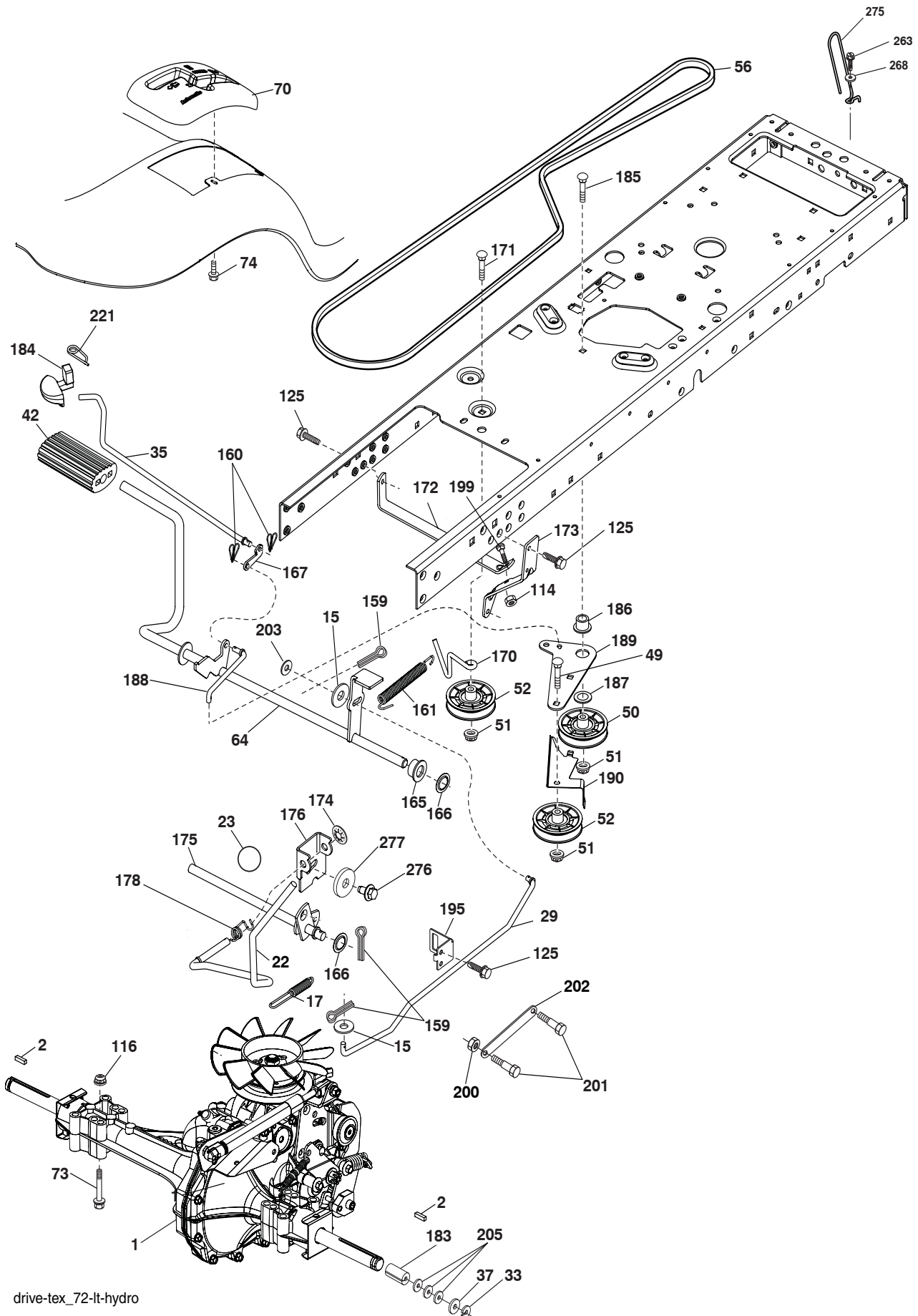
chassis-tex\_2+ pred

**TRACTOR - MODEL NUMBER P180107H 96041001600 PRODUCT NO. 960 41 00 16  
CHASSIS**

<b>KEY NO.</b>	<b>PART NO.</b>	<b>DESCRIPTION</b>
2	532 19 42-63	Drawbar
5	532 40 95-97	Dash
14	532 40 95-98	Hood
18	532 40 18-28	Grille
36	817 06 05-12	Screw 5/16-18 x 3/4
37	532 40 97-27	Fender
68	817 49 05-08	Screw Thdrol 5/16-18 x 1/2
99	532 40 50-92	Rod Asm Bypass
130	532 19 16-11	Screw 10 x 3/4 Single Lead-Hex
138	532 40 97-30	Cupholder
150	532 40 83-10	Duct Heat Hood
151	532 18 75-68	Bracket Pivot
152	532 19 43-29	Shield Browning/Debris
153	532 40 97-40	Lens Bar
159	817 00 06-12	Screw Hexwsh Thdrol 3/8-16 x 3/4
162	532 14 24-32	Screw Hexwsh Hi-Lo 1/4 x 1/2
175	532 19 94-72	Crossmember
176	532 40 07-76	Screw 10-24 x 5/8 Wshd Qdrx
177	532 19 52-28	Bushing Steering
180	532 19 42-60	Chassis
181	532 40 47-96	Bushing Mtg. Fender Crgo.
182	532 19 89-17	Dash Lower
183	874 78 05-20	Bolt Fin Hex 5/16-18 x 1-1/4
191	532 40 18-27	Reflector Insert
194	873 90 05-00	Nut Lock Hex Flange 5/16-18
196	532 41 05-84	Console Asm. Deck Lift
217	532 15 65-24	Rod Pivot Chassis
222	532 13 77-29	Screw Thd Roll 1/4-20 x 5/8
219	532 19 51-61	Stud Fastener
225	532 40 95-85	Bumper
230	532 17 01-65	Bolt Shoulder 5/16-18
235	532 40 61-29	Spacer Fender
236	873 93 05-00	Nut Center Lock 5/16-18

**NOTE:** All component dimensions given in U.S. inches  
1 inch = 25.4 mm

TRACTOR - MODEL NUMBER P180107H 96041001600 PRODUCT NO. 960 41 00 16  
DRIVE



drive-tex\_72-lt-hydro

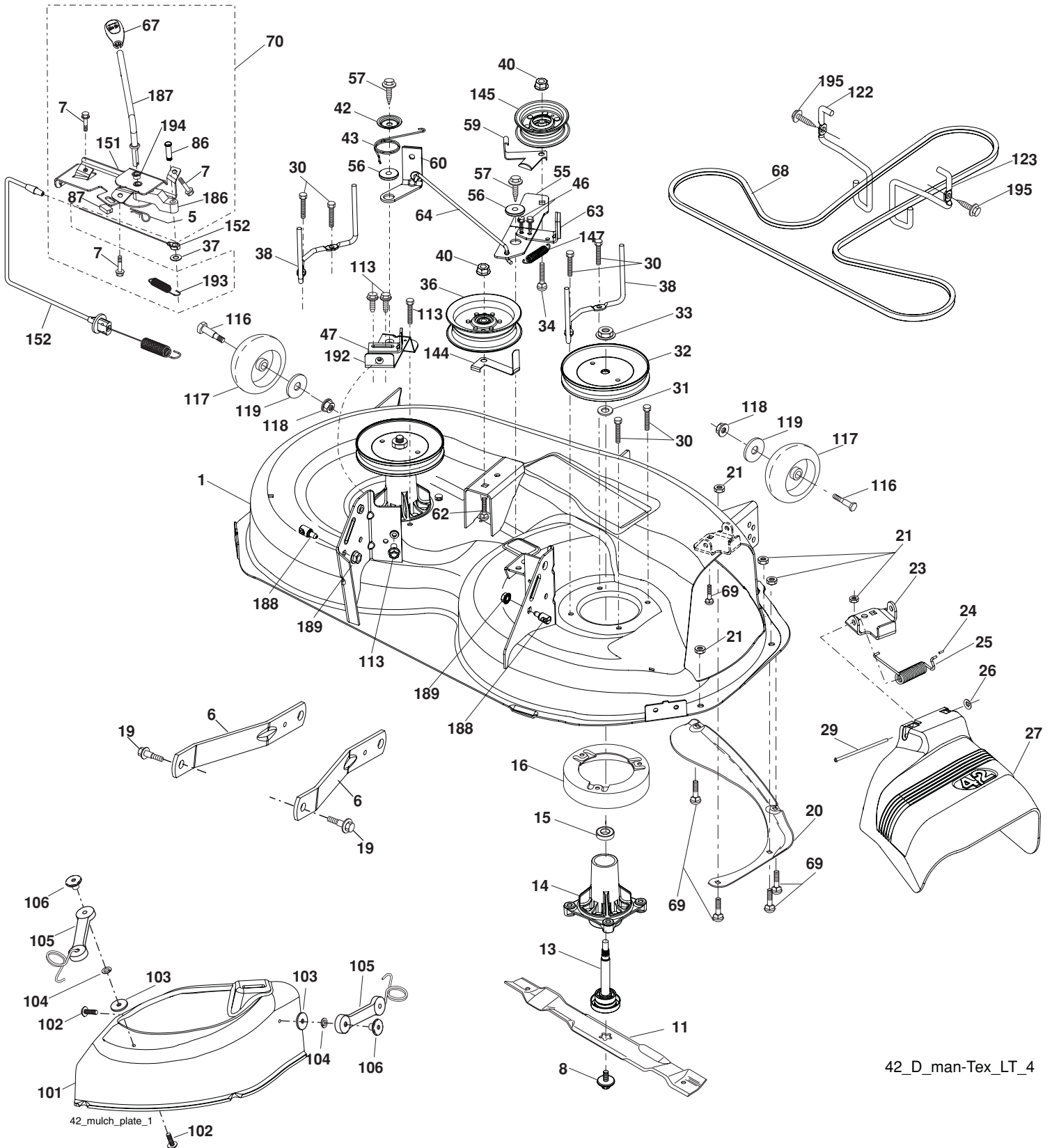


**TRACTOR - MODEL NUMBER P180107H 96041001600 PRODUCT NO. 960 41 00 16  
DRIVE**

KEY NO.	PART NO.	DESCRIPTION	KEY NO.	PART NO.	DESCRIPTION
1	-----	Transaxle, Hydro 351-0510 (Order Parts from Transaxle Manufacturer)	170	532 19 43-22	Keeper Belt Centerspan
2	532 12 35-83	Key	171	872 11 06-16	Bolt
15	819 13 13-16	Washer 13/32 x 13/16 x 16 Ga.	172	532 19 76-56	Strap Torque LH
17	532 19 72-96	Spring, Brake	173	532 19 76-55	Strap Torque RH
22	532 19 76-60	Rod Shift	174	532 19 72-89	Nut Push
23	532 41 14-00	Knob	175	532 19 76-53	Shaft Asm
29	532 19 76-59	Rod, Brake	176	532 19 62-14	Asm Clevis Rod Shift
33	812 00 00-01	Ring E	178	532 19 74-56	Spring Shift
35	532 40 10-31	Rod, Brake, Park	183	532 13 70-57	Spacer Axle
37	532 12 17-49	Washer 25/32 x 1-1/4 x 16 Ga.	184	532 40 97-47	Handle Parking Brake
42	532 12 48-72	Cover, Foot Pedal	185	872 11 06-20	Bolt
49	872 11 06-14	Bolt	186	532 19 43-21	Spacer Retainer
50	532 19 43-27	Pulley Idler Flat	187	819 13 32-10	Washer
51	873 90 06-00	Lock Nut 3/8-16	188	532 19 43-23	Link Clutch Ground Drive
52	532 19 43-26	Idler V-Groove 910" Offset	189	532 19 43-17	Bellcrank Ground Drive
56	532 14 02-18	V-Belt, Drive	190	532 19 43-18	Keeper Bellcrank Ground Drive
64	532 19 62-00	Shaft Asm. Pedal Brake Control	195	532 19 80-12	Bracket Rod Brake
70	532 41 13-29	Console Shift	199	872 14 05-08	Bolt RDHD SQNK 5/16-18 unc x 1
73	874 49 05-44	Bolt Hex Flghd 5/16-18 Gr. 5	200	873 93 05-00	Nut Center Lock 5/16-18 unc
74	532 14 24-32	Screw Hex wsh Hi-Lo 1/4 x 1/2 unc	201	532 16 96-12	Bolt Shoulder 5/16-18 unc
114	873 80 05-00	Nut Lock Hex W/INS 5/16-18 unc	202	532 19 77-14	Link Trans
116	873 90 05-00	Nut Lock Hex Flange 5/16-18	203	819 11 11-16	Washer 11/32 x 11/16 x 16 Ga.
125	817 00 05-12	Screw 5/16-18 x 3/4	205	532 12 17-48	Washer 25/32 x 1-5/8 x 16 Ga.
159	876 02 04-12	Pin Cotter 1/8 x 3/4	221	532 40 31-87	Retainer Spring Clip Handle
160	532 16 94-84	Retainer Clip	263	817 00 06-12	Screw Hex Wsh Thdrol 3/8-16 x 3/4
161	532 19 54-03	Spring, Return, Clutch	268	819 13 16-14	Washer 13/32 x 1 x 14
165	532 19 62-12	Bushing	275	532 18 24-02	Guard Muffler
166	532 19 72-90	Nut Push .625	276	874 78 07-16	Bolt Fin Hex 7/16-14 x 1
167	532 40 52-57	Latch Brake Parking	277	532 40 52-96	Washer Serrated

**NOTE:** All component dimensions given in U.S. inches  
1 inch = 25.4 mm

**TRACTOR - MODEL NUMBER P180107H 96041001600 PRODUCT NO. 960 41 00 16**  
**MOWER DECK**



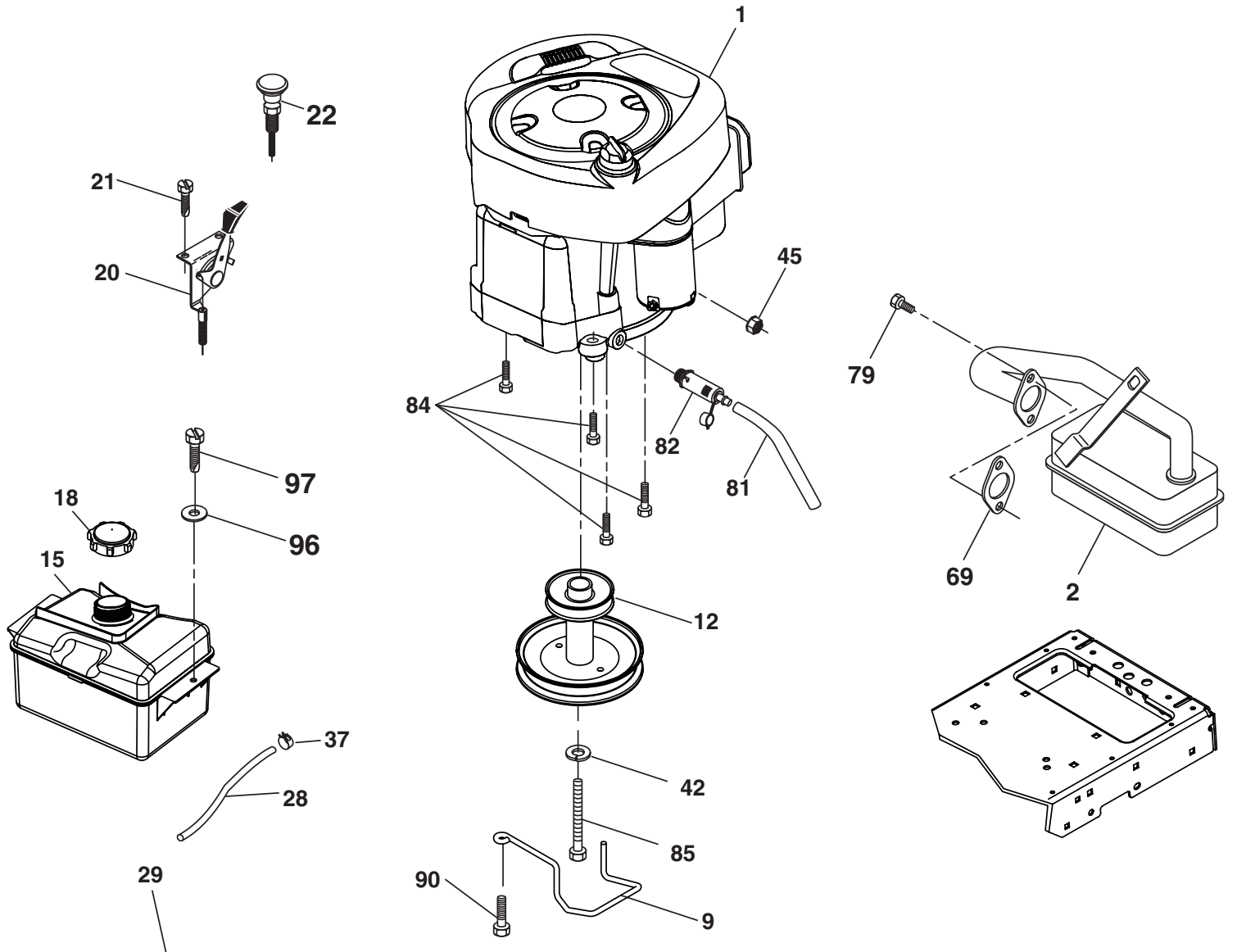
42\_D\_man-Tex\_LT\_4

**TRACTOR - MODEL NUMBER P180107H 96041001600 PRODUCT NO. 960 41 00 16**  
**MOWER DECK**

KEY NO.	PART NO.	DESCRIPTION	KEY NO.	PART NO.	DESCRIPTION
1	532 19 64-95	Mower Housing	63	532 19 94-77	Arm Brake Mower
5	532 12 46-70	Retainer Spring	64	532 19 97-90	Linkage Brake
6	532 19 51-86	Arm Suspension	67	532 40 97-92	Handle, Clutch Cable
7	532 19 16-11	Screw 10 x 3/4 Single Hex	68	532 19 72-53	V-Belt
8	532 19 30-03	Bolt/Washer asm 7/16-20 unf	69	872 14 05-05	Bolt Rdhd Sqnk 5/16-18 x 5/8
11	532 13 41-49	Blade, 42" Mulching Std (For mulching mowers only)	70	532 40 12-46	Clutch Asm. Manual
13	532 19 28-72	Shaft Assembly, Mandrel	86	532 19 77-98	Pin Attachment Cable
14	532 18 72-81	Housing, Mandrel	87	532 19 78-02	Switch Interlock Clutch
15	532 11 04-85	Bearing, Ball, Mandrel	101	532 19 31-07	Cover Mulching
16	532 17 44-93	Stripper, Mower Deck	102	871 08 10-10	Screw 10-24 x 5/8
19	532 19 65-39	Bolt, Shoulder	103	819 06 12-16	Washer # 10
20	532 15 97-70	Baffle, Vortex	104	810 07 10-00	Washer Lock # 10
21	873 68 05-00	Nut, Crownlock 5/16-18 unc	105	532 16 07-93	Latch Asm
23	532 19 25-57	Bracket, Deflector	106	532 12 50-04	Nut Weld .337/.304 # 10-24
24	532 10 53-04	Cap, Sleeve	113	817 00 05-10	Screw 5/16-18
25	532 19 70-26	Spring, Torsion, Deflector	116	532 12 48-42	Bolt, Shoulder
26	532 11 04-52	Nut, Push	117	532 18 86-06	Wheel, Gauge
27	532 40 30-04	Shield, Deflector	118	873 93 06-00	Nut, Crownlock 3/8-1
29	532 13 14-91	Rod, Hinge	119	819 12 14-14	Washer 13/32 x 7/8 x 14 Ga.
30	532 17 39-84	Screw Thdrol Rolling Wsh Hd	122	532 19 72-58	Keeper Belt Eng. LH
31	532 18 76-90	Washer, Spacer	123	532 19 72-59	Keeper Belt Eng. RH
32	532 19 74-73	Pulley, Mandrel	144	532 19 92-04	Keeper Belt
33	532 40 02-34	Nut, Toplock, Flanged	145	532 19 73-79	Pulley Idler
34	872 11 06-12	Bolt Carr Sh. 3/8-16 x 1-1/2 Gr. 5	147	532 40 19-71	Spring Return
36	532 19 31-97	Pulley, Idler, Flat	151	532 40 12-44	Bracket Clutch CBL
37	819 13 13-16	Washer 13/32 x 13/16 x 16 Ga.	152	532 40 87-14	Cable Clutch Manual w/Spr.
38	532 19 91-89	Keeper Belt LH Mandrel	186	532 19 77-99	Arm Acutator CL Cable
40	873 90 06-00	Nut, Lock Flg. 3/8-16 unc	187	532 40 12-45	Lever Control CL Cable
42	532 19 84-10	Spring Torsion Brake	188	532 19 51-61	Stud Fastener
43	532 19 72-56	Spring Torsion Retainer	189	873 90 05-00	Nut Lock Hex Flange
46	532 13 77-29	Screw Thd Roll 1/4-20 x 5/8	192	532 19 72-60	Bracket Brake Stand LH
47	532 19 72-50	Bracket Clutch Cable	193	532 19 78-01	Spring Plunger Actuator
55	532 19 72-49	Arm, Idler	194	532 19 77-97	Bearing Control Lever Clutch
56	532 19 90-92	Spacer, Retainer	195	817 00 06-12	Screw Hexwsh Thdr 3/8-16 x 3/4
57	817 00 06-16	Screw Hexwsh Thd 3/8-16 x 1	--	532 19 28-70	Mandrel Assembly (Includes housing, shaft and shaft hardware only-pulley not included)
59	532 14 10-43	Guard, Tuv Idler (94)	--	532 40 51-26	Replacement Mower, Complete
60	532 19 72-61	Arm Brake Mower			
62	872 11 06-16	Bolt Rdhd Sqnk 3/8-16 unc x 2			

**NOTE:** All component dimensions given in U.S. inches  
1 inch = 25.4 mm

**TRACTOR - MODEL NUMBER P180107H 96041001600 PRODUCT NO. 960 41 00 16  
ENGINE**



**OPTIONAL EQUIPMENT**  
**Spark Arrester**

engine-bs-1cyl-tex\_5

**TRACTOR - MODEL NUMBER P180107H 96041001600 PRODUCT NO. 960 41 00 16  
ENGINE**

KEY NO.	PART NO.	DESCRIPTION
1	-----	Engine B&S Model No. 31N707
2	532 13 73-52	Muffler
9	532 19 43-19	Keeper Belt Engine
12	532 40 19-85	Pulley Engine
15	532 40 75-45	Tank Fuel
18	532 19 77-25	Cap Asm
20	532 41 17-24	Control Throttle/Choke
21	532 19 16-11	Screw 10 x 3/4 Single Lead-Hex
22	532 19 49-81	Control Choke
28	532 13 70-40	Fuel Line
29	532 13 71-80	Spark Arrester Kit
37	532 12 34-87	Clamp Hose
42	810 04 07-00	Washer Lock 7/16
45	873 51 04-00	Nut Keps Hex 1/4-20 unc
69	532 16 52-91	Gasket
79	532 19 23-34	Screw Socket Hd 5/16-18 x .75
81	532 14 84-56	Tube Drain Oil Easy
82	532 18 16-54	Plug Drain Oil
84	817 06 06-20	Screw 3/8-16 x 1-1/4
85	532 17 39-37	Bolt Hex 7/16-20 x 4 x Gr. 5-1.5
90	817 00 06-16	Screw 3/8-16 x 1.0
96	819 09 14-16	Washer 9/32 x 7/8 x 16 Ga
97	817 67 04-12	Screw 1/4-20 x 3/4

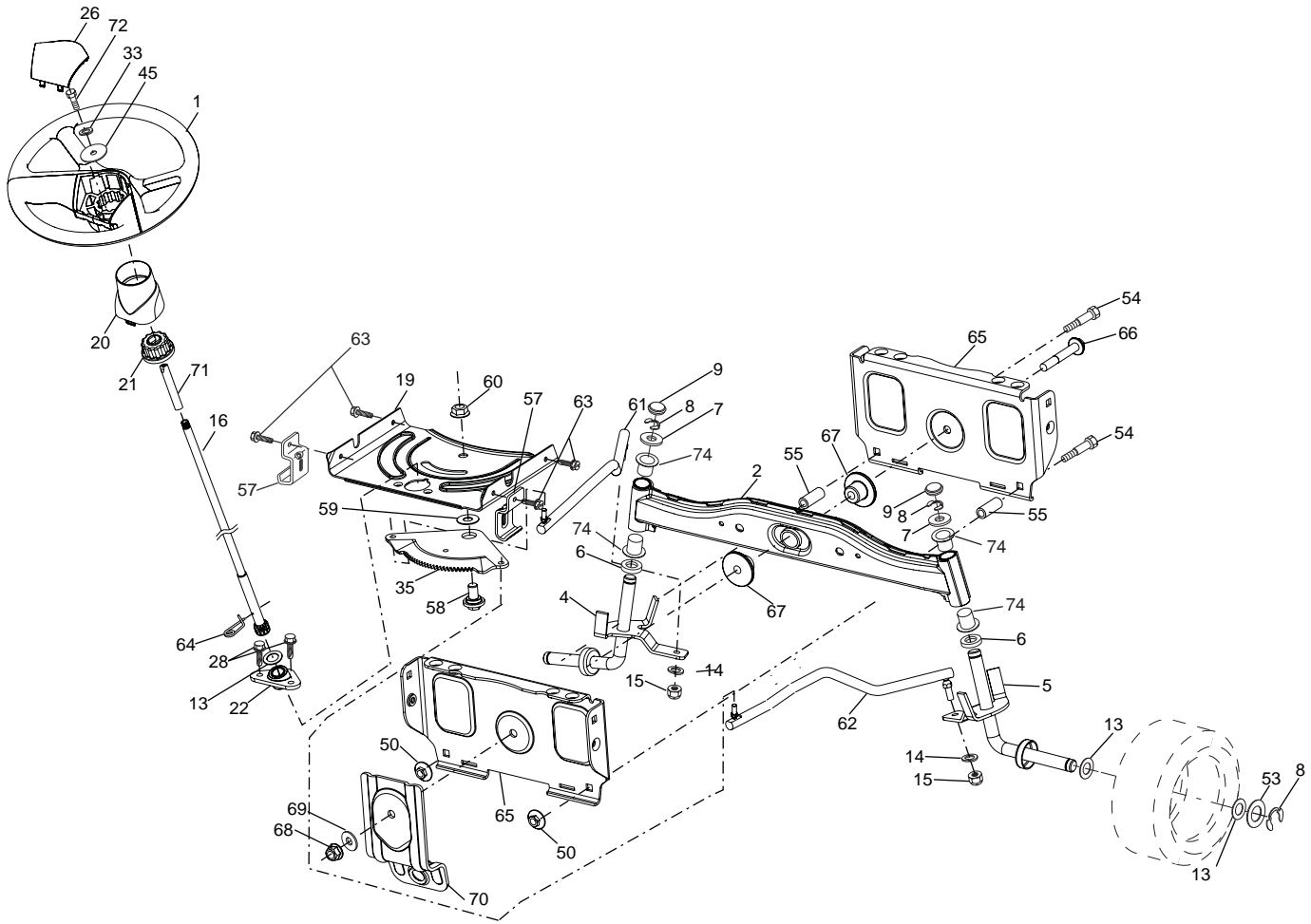
**NOTE:** All component dimensions given in U.S. inches  
1 inch = 25.4 mm

**Engine Power Rating Information**

The gross power rating for individual gas engine models is labeled in accordance with SAE (Society of Automotive Engineers) code J11940 (Small Engine Power & Torque Rating Procedure), and rating performance has been obtained and corrected in accordance with SAE J1995 (Revision 2002-5). Actual gross engine power will be lower and is affected by, among other things, ambient operating conditions and engine-to-engine variability. Given both the wide array of products on which engines are placed and the variety of environmental issues applicable to operating the equipment, the gas engine will not develop the rated gross power when used in a given piece of power equipment (actual "on-site" or net horsepower). This difference is due to a variety of factors including, but not limited to, accessories (air cleaner, exhaust, charging, cooling, carburetor, fuel pump, etc.), application limitations, ambient operating conditions (temperature, humidity, altitude), and engine-to-engine variability. Due to manufacturing and capacity limitations, Briggs & Stratton may substitute an engine of higher rated power for this Series engine.

# TRACTOR - MODEL NUMBER P180107H 96041001600 PRODUCT NO. 960 41 00 16

## STEERING ASSEMBLY



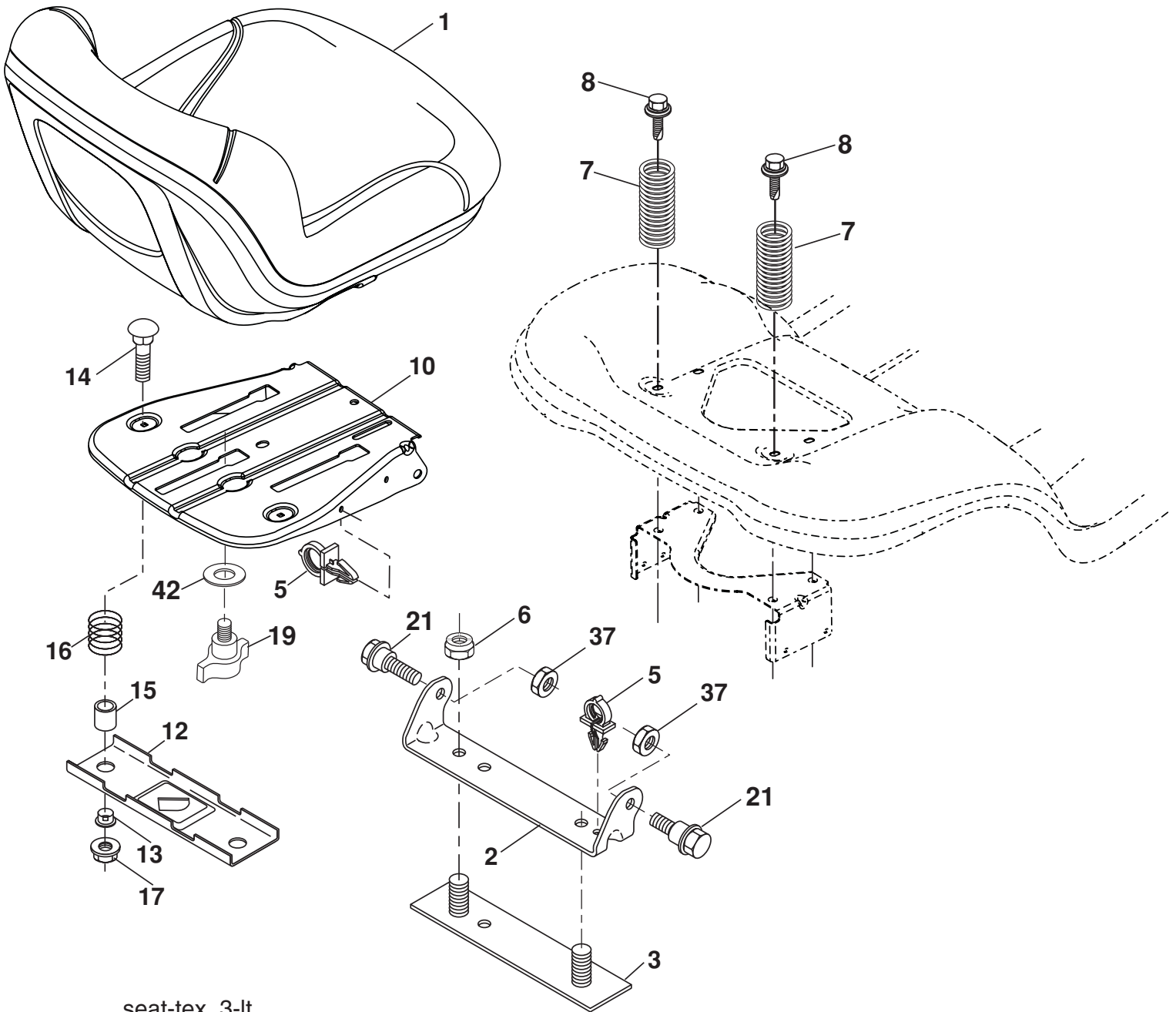
steering-tex\_5-1t

KEY NO.	PART NO.	DESCRIPTION	KEY NO.	PART NO.	DESCRIPTION
1	532 19 45-95	Wheel, Steering	50	873 90 06-00	Nut Lock Flg 3/8-16 unc
2	532 19 56-73	Axle Asm., Front	53	532 18 89-67	Washer Hardened .793 x 1.637 x .060
4	532 40 30-87	Spindle Asm., LH	54	874 76 06-36	Bolt Hex HS 3/8-16 unc x 2-1/4
5	532 40 30-88	Spindle Asm., RH	55	532 19 76-36	Spacer Brace Axle
6	532 12 49-31	Bearing, Race Thrust Harden	57	532 40 74-65	Bracket Upstop
7	532 12 17-48	Washer 25/32 x 1-5/8 x 16 Ga.	58	532 19 47-47	Bolt Shoulder Sector Pivot CFM
8	812 00 00-29	Ring, Klip #T5304-75	59	532 19 47-48	Washer Thrust Sector Steering
9	532 12 12-32	Cap, Spindle	60	873 97 10-00	Nut Flange Lock 5/8-11
13	532 12 17-49	Washer 25/32 x 1-1/4 x 16 Ga.	61	532 19 47-40	Draglink LH
14	532 10 04-06	Washer, Lock Hvy Hlcl Spr 3/8	62	532 19 47-41	Draglink, RH
15	873 54 06-00	Nut, Crown Lock 3/8-24 unf	63	817 00 05-12	Screw 5/16-18 x 3/4
16	532 19 60-74	Shaft Steering	64	532 19 98-49	Retainer Clip Spring Steering
19	532 19 47-29	Plate Steering	65	532 19 47-34	Brace Axle Front
20	532 40 97-63	Boot, Steering	66	871 02 07-48	Bolt Hex Fghd 7/16-14 x 3 Serr
21	532 18 67-37	Adapter, Wheel Steering	67	532 19 47-37	Bushing PM Front Axle
22	532 19 48-45	Bushing, Strg. Blk	68	873 90 07-00	Nut Lock Flange 7/16-14 Gr. 5
26	532 19 46-03	Insert, Wheel Steering	69	532 19 91-62	Washer 1.5 x .505 x .118
28	817 00 06-12	Screw 3/8-16 x 3/4	70	532 19 61-97	Bracket Deck Susp. Front
33	810 04 05-00	Washer Lock 5/16	71	532 19 60-75	Shaft Ext. Steering
35	532 19 47-32	Gear, Sector Plate	72	874 78 05-72	Bolt 5/16-18 x 4.5 Gr. 5
45	819 11 38-12	Washer 11/32 x 2-3/8 x 12 Ga.	74	532 12 49-37	Bearing

**NOTE:** All component dimensions given in U.S. inches  
1 inch = 25.4 mm



**TRACTOR - MODEL NUMBER P180107H 96041001600 PRODUCT NO. 960 41 00 16  
SEAT ASSEMBLY**



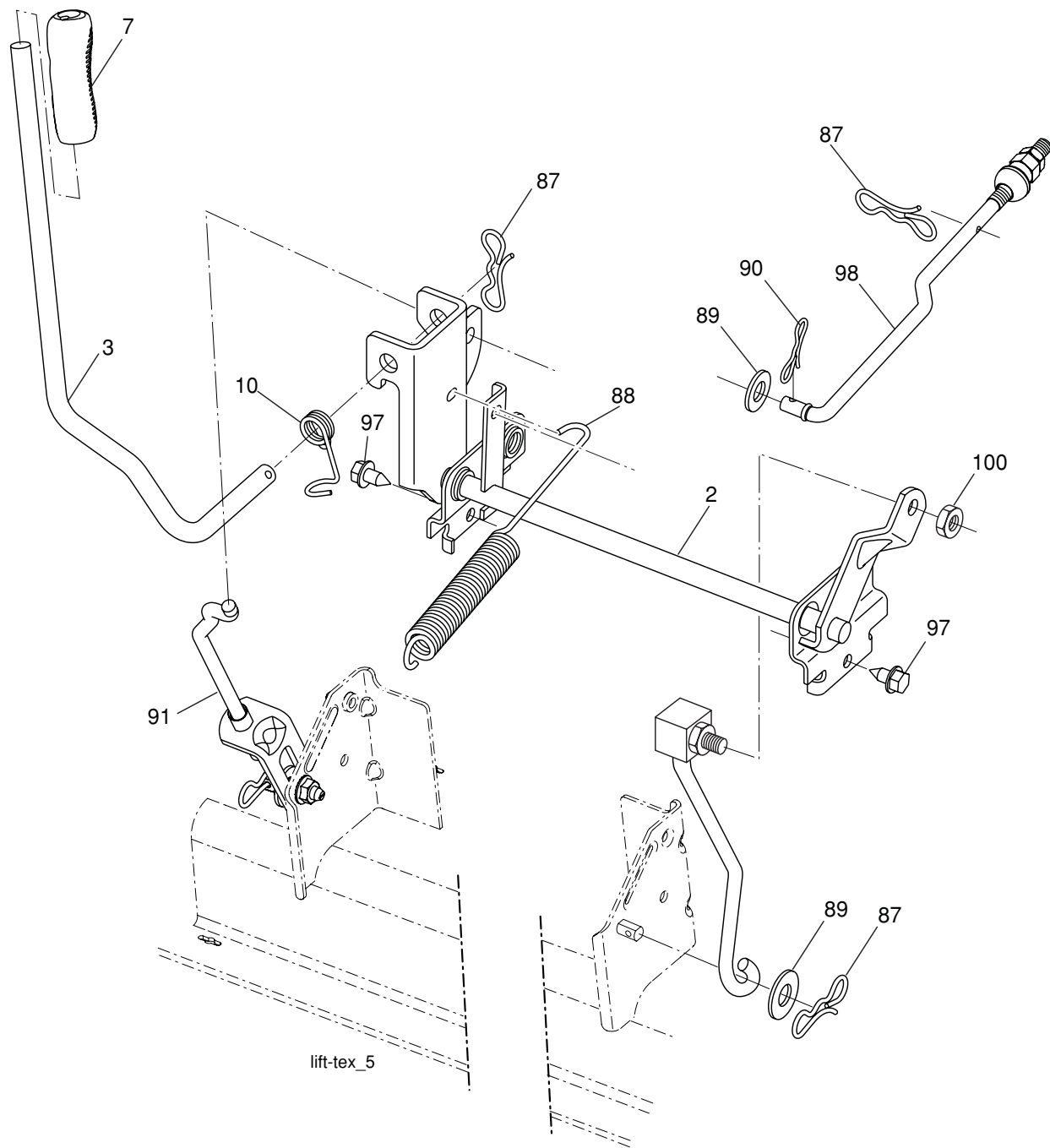
seat-tex\_3-lt

KEY NO.	PART NO.	DESCRIPTION
1	532 40 66-25	Seat
2	532 18 01-66	Bracket Pivot Fender
3	532 14 06-75	Strap, Asm Fender
5	532 14 50-06	Clip, Push In, Hinged
6	873 80 06-00	Nut, Lock W/Ins. 3/8-16 unc
7	532 12 41-81	Spring, Seat Cprsn
8	532 17 18-77	Bolt 5/16-18 unc x 3/4 w/Sems
10	532 19 91-80	Pan, Seat
12	532 19 93-70	Bracket Mtg. Seat

KEY NO.	PART NO.	DESCRIPTION
13	532 12 12-48	Bushing Snap
14	872 05 04-12	Bolt 1/4-20 x 1.50
15	532 13 43-00	Spacer Split
16	532 12 37-40	Spring
17	532 12 39-76	Nut Lock 1/4
19	532 19 93-72	Knob Seat
21	532 17 18-52	Bolt, Shoulder 5/16-18
37	873 80 05-00	Nut, Lock 5/16-18 unc
42	532 19 93-71	Washer

**NOTE:** All component dimensions given in U.S. inches  
1 inch = 25.4 mm

**TRACTOR - MODEL NUMBER P180107H 96041001600 PRODUCT NO. 960 41 00 16**  
**LIFT ASSEMBLY**



KEY NO.	PART NO.	DESCRIPTION
2	532 19 52-23	Shaft Asm., Lift
3	532 19 52-31	Lever Asm., Lift Rh
7	532 41 17-42	Grip, Lever
10	532 19 63-14	Spring Torsion
87	532 19 42-09	Pin Cotter 7/16 Bow Tie Lock
88	532 19 53-03	Spring Lift Assist

KEY NO.	PART NO.	DESCRIPTION
89	819 19 19-12	Washer Clear Zinc
90	532 19 42-08	Pin Cotter 5/16 Bow Tie Lock
91	532 19 51-81	Link Lift Susp Mower Rear
97	817 06 06-12	Screw 3/8-16 x .75 Smgml Tap/R.Z
98	532 19 52-70	Link Lift Susp. Front Mower
100	873 93 06-00	Nut Centerlock 3/8-16 unc

**NOTE:** All component dimensions given in U.S. inches 1 inch = 25.4 mm